



Long Hill Road, Chavey Down
£495,000

OSBORNE HEATH



On the ground floor is a living room with an open fire place, dining room, kitchen and a downstairs bathroom.

The first floor has three bedrooms.

Outside the property has a driveway, garage and side access to the large rear garden. The property offers great scope for extension subject to planning permission.

Victor Cottages is on Long Hill Road in Chavey Down, Ascot. Nearby places of interest include Ascot Racecourse, The Berkshire Golf Club, Coworth Park, Guards Polo Club, Sunningdale Golf Club, Swinley Forest Golf Club, Wentworth Club and Windsor Great Park. Popular schools nearby include Charters, Cheapside, Ranelagh, St Francis and Whitegrove. The nearest stations are Ascot and Martin Herons where services run to London, Reading and Guildford. Ascot is also convenient for the M3, M4, M25 and Heathrow Airport.

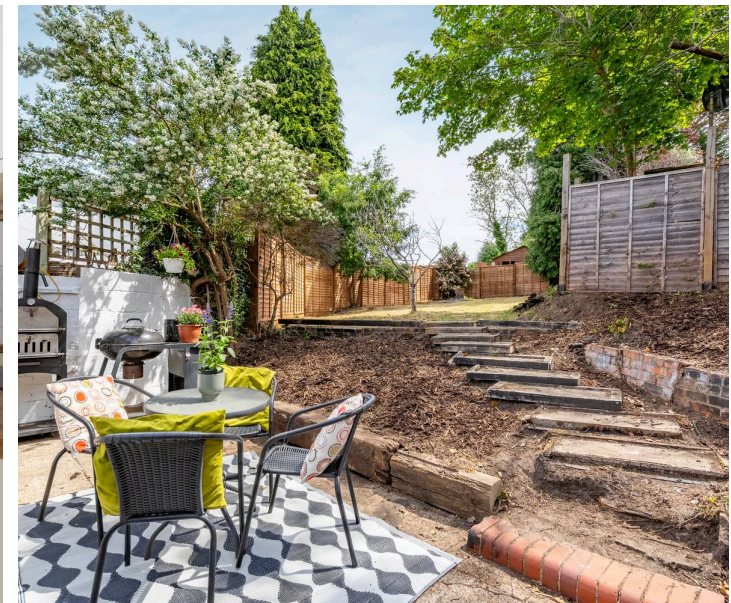
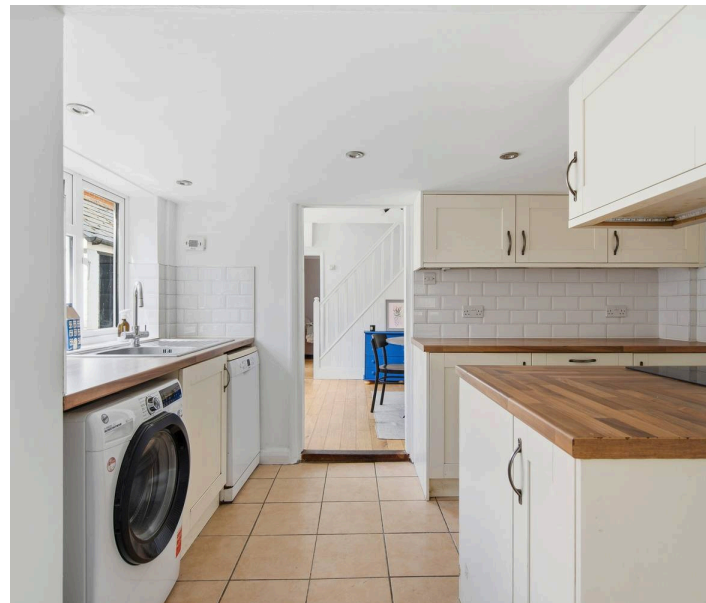
Long Hill Road

Chavey Down

- Three Bedrooms
- Two Receptions
- Semi-Detached
- Garage
- Driveway
- Large Garden
- Potential To Extend STP
- Character
- No Onward Chain

Council Tax band: D

Tenure: Freehold



APPROXIMATE FLOOR AREA

House - 81.05 sq m - 872 sq ft
Garage - 13.75 sq m - 148 sq ft
Total - 94.80 sq m - 1020 sq ft
(Gross Internal Area)

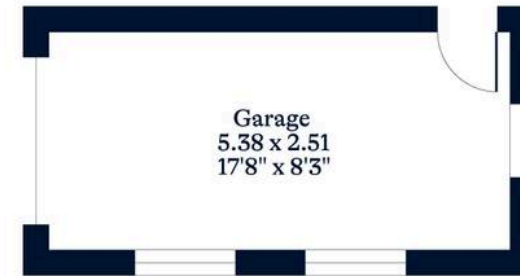


NOT TO SCALE

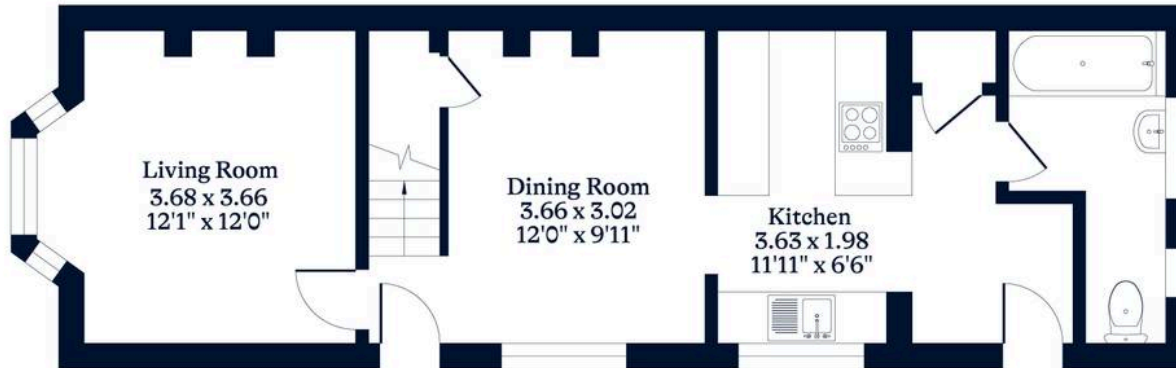
This plan is for illustration purposes only



First Floor



Garage



Ground Floor

OSBORNEHEATH.CO.UK

This floor plan has been created by Property Shoot Ltd following the RICS code of measuring and is for indicative guidance only. Whilst every attempt has been made to ensure the accuracy of the floor plan contained here, measurements of doors, windows and rooms are approximate and no responsibility is taken for any error, omission or misstatement.

Details shown on this floorplan, including all measurements, areas and proportions cannot be guaranteed by either the provider or estate agency and should not be relied upon.