

TIO



Leacroft, Sunningdale
Guide Price £525,000

OSBORNE HEATH



On the ground floor is a modern kitchen, large living room with bi-folding doors leading out to the garden and a downstairs WC.

The first floor has three bedrooms and modern bathroom.

Outside is a garage with parking at the front. Rear garden with a patio and lawned area.

Leafcroft is a small cul-de-sac in Sunningdale close to Coworth Park. Nearby schools include Holy Trinity, Charters and The Marist. The closest station is Sunningdale where trains run to London Waterloo and Reading. Nearby points of interest include Ascot Racecourse, Legoland, Sunningdale Golf Club, Virginia Water Lake, Wentworth Club and Windsor Great Park. Sunningdale is also convenient for the M3, M4, M25 and Heathrow Airport.

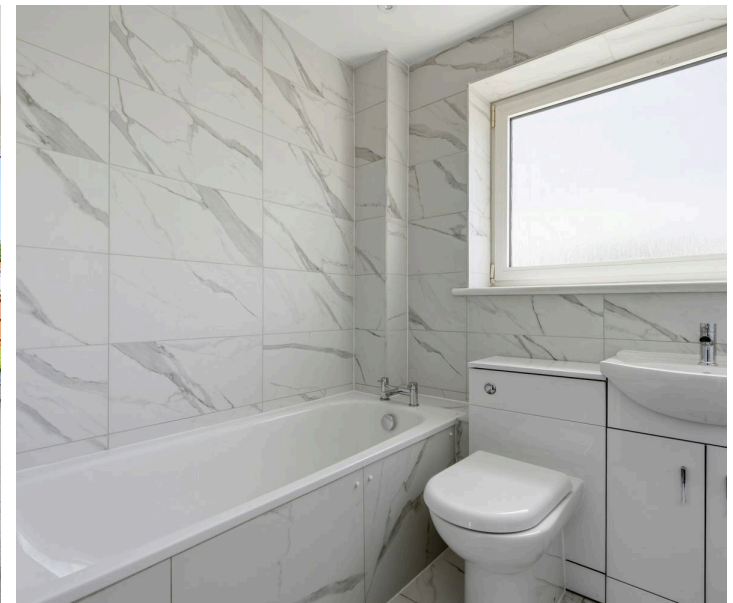
Leacroft

Sunningdale

- Three Bedrooms
- Modern Kitchen
- Recently Refurbished
- Modern Bathroom
- Downstairs WC
- Cul-De-Sac
- Garage
- Charters Catchment
- No Onward Chain

Council Tax band: E

Tenure: Freehold



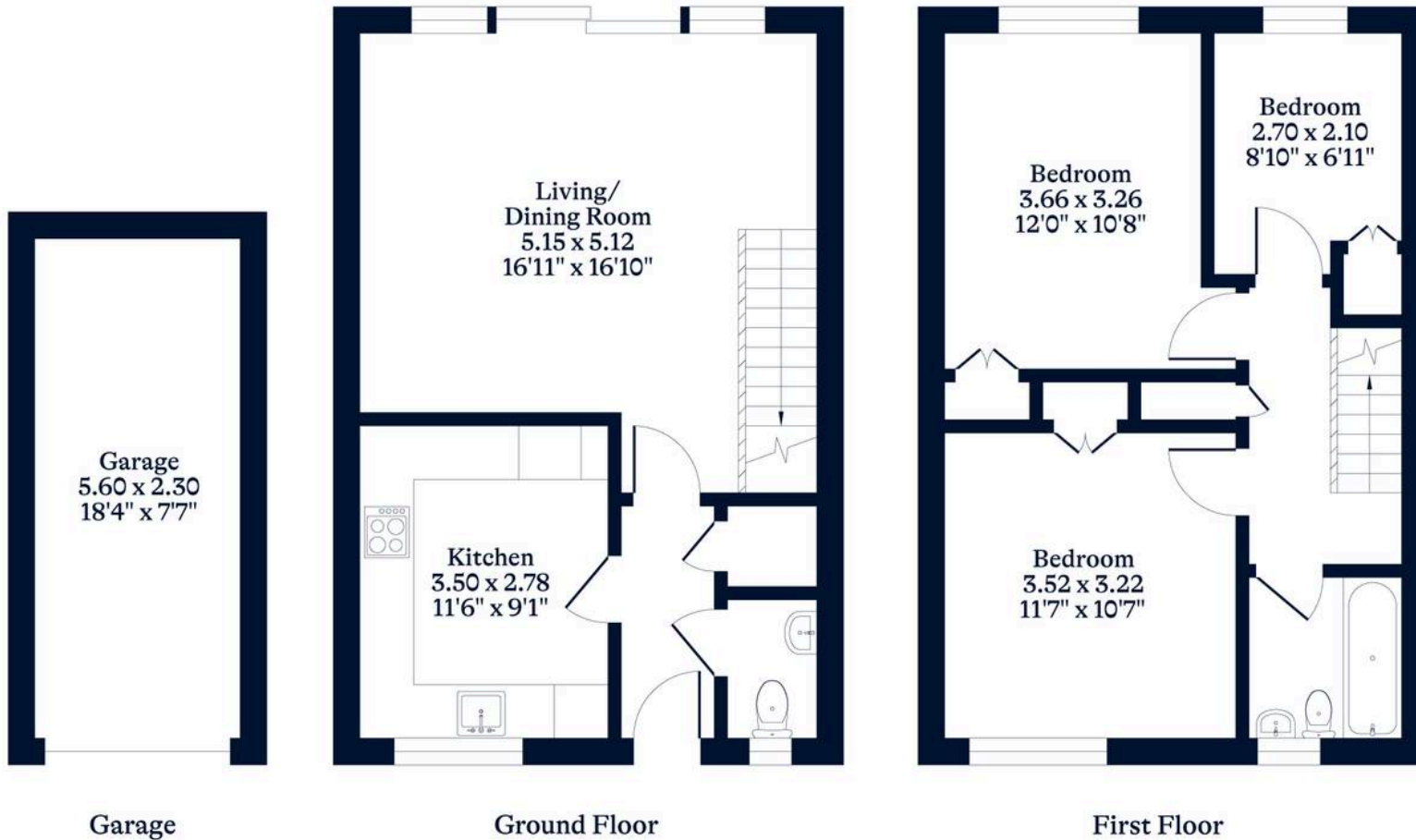
APPROXIMATE FLOOR AREA

House - 80.89 sq m - 870 sq ft
Garage - 12.88 sq m - 138 sq ft
Total - 93.77 sq m - 1008 sq ft
(Gross Internal Area)



NOT TO SCALE

This plan is for illustration purposes only



OSBORNEHEATH.CO.UK

This floor plan has been created by Property Shoot Ltd following the RICS code of measuring and is for indicative guidance only. Whilst every attempt has been made to ensure the accuracy of the floor plan contained here, measurements of doors, windows and rooms are approximate and no responsibility is taken for any error, omission or misstatement.

Details shown on this floorplan, including all measurements, areas and proportions cannot be guaranteed by either the provider or estate agency and should not be relied upon.