

O I O



St. Marks Place, Windsor  
£3,750 PCM

OSBORNE HEATH



The ground floor has a large reception room with high ceilings and solid wood herringbone flooring throughout, a modern kitchen with central island, integrated appliances, sky lights and feature window overlooking the garden, utility room and a downstairs WC.

The first floor has two double bedrooms, fitted wardrobes and an en suite with the principal bedroom, and four piece family bathroom.

On the second floor is the third bedroom and a convenient WC.

St. Marks Place is a small, one-way residential street in Windsor town centre, off St. Leonards Road. Windsor has a wide range of shops and restaurants as well as the Castle, Great Park, Racecourse and Legoland. Nearby train stations include Windsor & Eton Central and Windsor & Eton Riverside where trains run to London Paddington (via Slough) and London Waterloo. Nearby schools include Eton, The Kings House, Oakfield, The Queen Anne, St Edwards, Trevelyan, Trinity St Stephen, Upton House, Windsor Boys and Windsor Girls. Windsor is also convenient for the M4, M25 and Heathrow Airport.

# St. Marks Place

## Windsor

- Three Double Bedroom
- Two Bathroom
- Modern Kitchen
- Utility Room
- Downstairs WC
- Newly Renovated
- High Spec
- Character
- Town Centre
- Available Immediately

Council Tax band: E

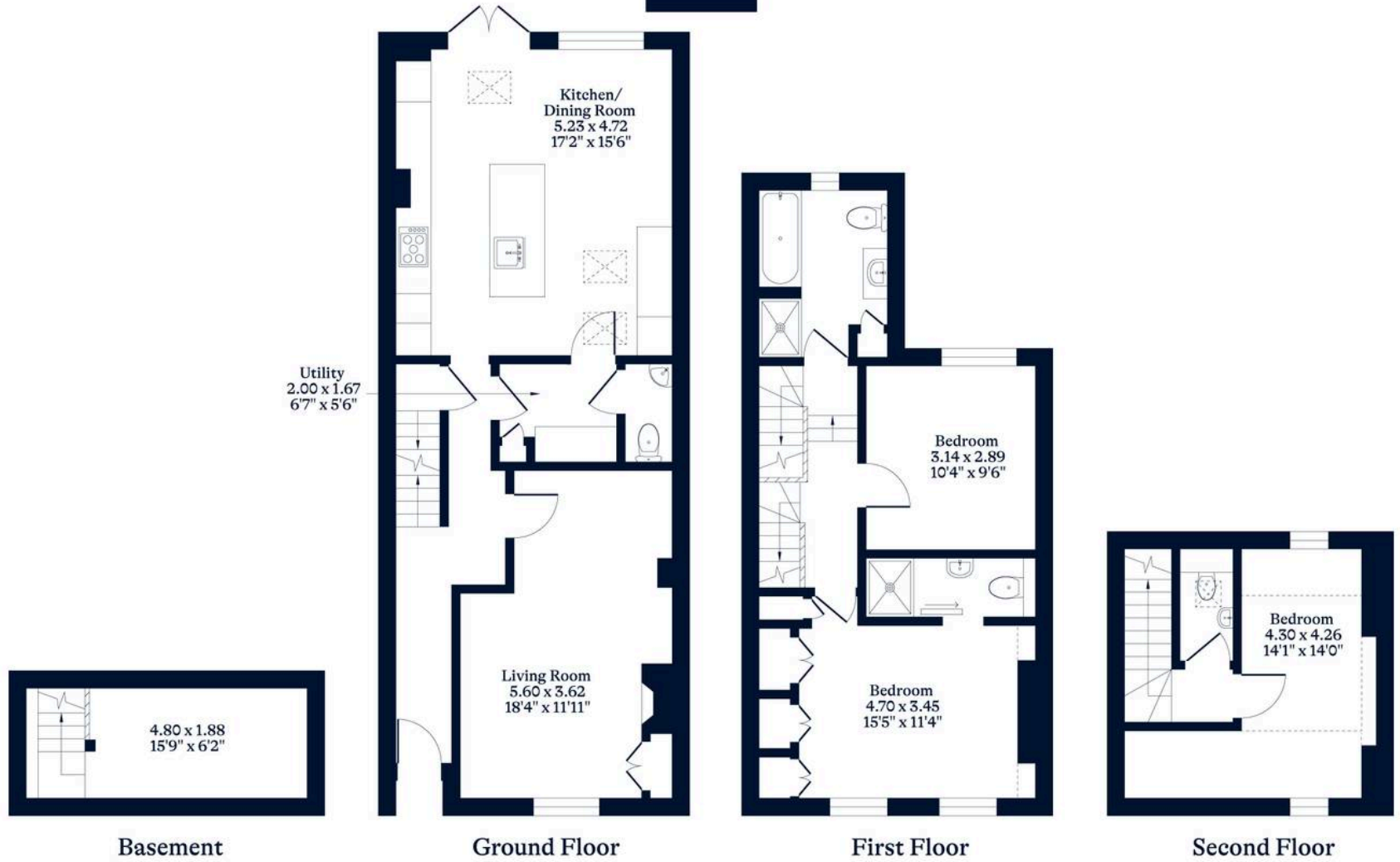
Tenure: Freehold



**APPROXIMATE FLOOR AREA**  
House - 128.54 sq m - 1383 sq ft  
(Gross Internal Area)



**NOT TO SCALE**  
This plan is for illustration purposes only



[OSBORNEHEATH.CO.UK](http://OSBORNEHEATH.CO.UK)

This floor plan has been created by Property Shoot Ltd following the RICS code of measuring and is for indicative guidance only. Whilst every attempt has been made to ensure the accuracy of the floor plan contained here, measurements of doors, windows and rooms are approximate and no responsibility is taken for any error, omission or misstatement. Details shown on this floorplan, including all measurements, areas and proportions cannot be guaranteed by either the provider or estate agency and should not be relied upon.