



OIH

Maximum height
2.4m

NO PARKING
THIS SIDE
OF ARCHWAY

St. Leonards Road, Windsor
£375,000

OSBORNE HEATH



This ground floor apartments has a living and dining area leading out to the private courtyard garden, separate kitchen, two double bedrooms and a new shower room.

To the rear of the property there is residents parking and a garage.

Maple Court is off St Leonards Road. Windsor has a wide range of shops and restaurants as well as the Castle, Great Park, Racecourse and Legoland. Nearby train stations include Windsor & Eton Central and Windsor & Eton Riverside where trains run to London Paddington (via Slough) and London Waterloo. Nearby schools include Eton, The Kings House, Oakfield, The Queen Anne, St Edwards, Trevelyan, Trinity St Stephen, Upton House, Windsor Boys and Windsor Girls. Windsor is also convenient for the M4, M25 and Heathrow Airport.

St. Leonards Road, Windsor

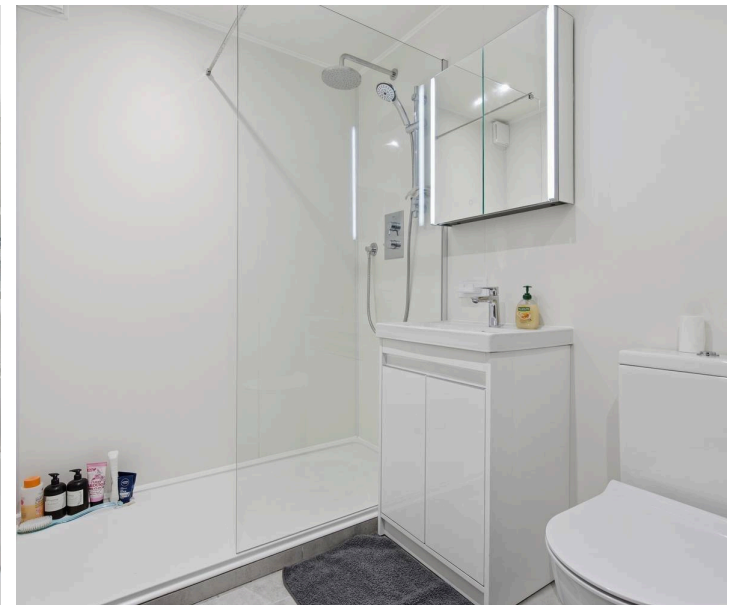
- Two Double Bedrooms
- Ground Floor
- Private Garden
- Parking
- Garage

Council Tax band: C

Tenure: Leasehold

EPC Energy Efficiency Rating: E

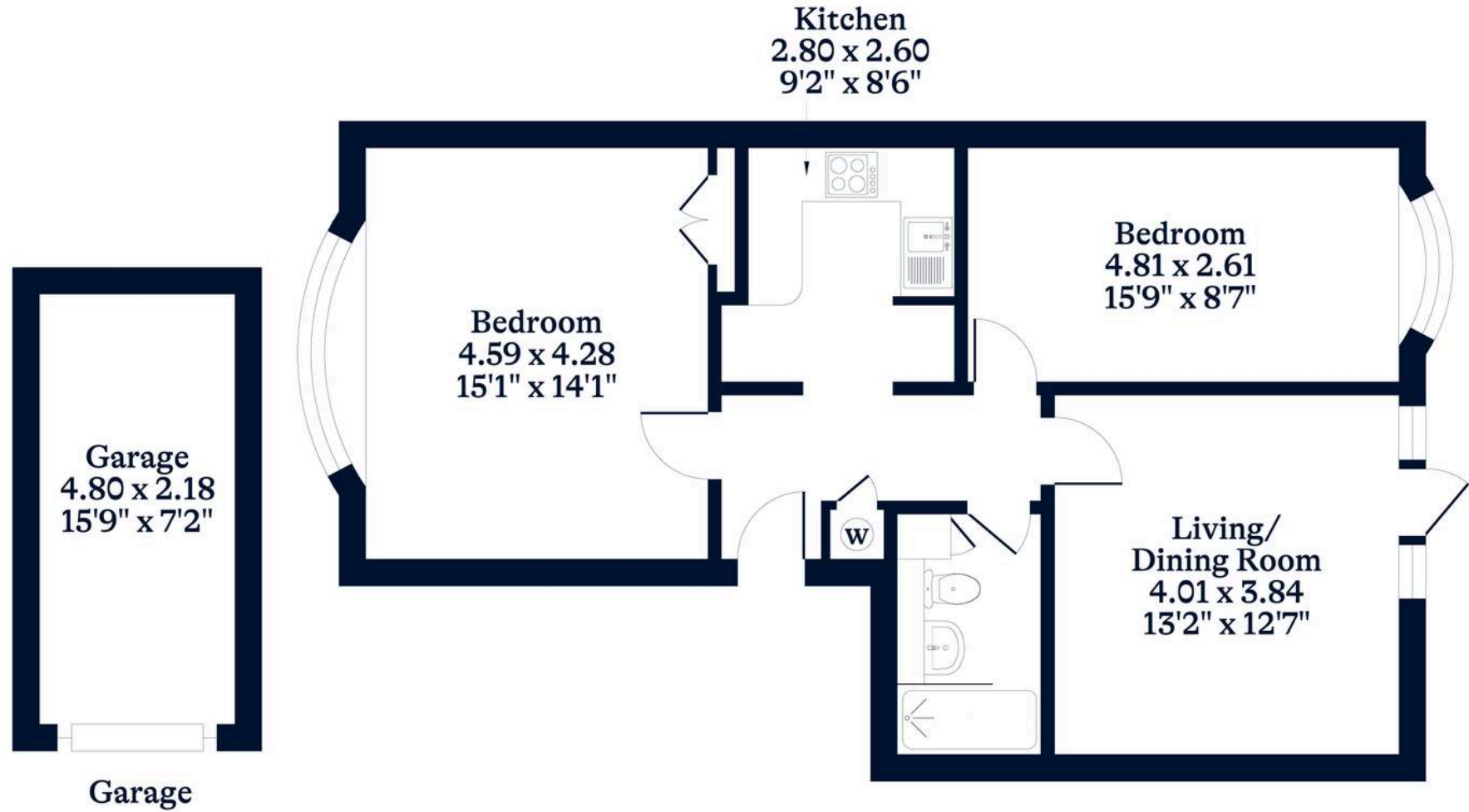
EPC Environmental Impact Rating: F



APPROXIMATE FLOOR AREA
Apartment - 66.42 sq m - 715 sq ft
Garage - 10.46 sq m - 113 sq ft
Total - 76.88 sq m - 828 sq ft
(Gross Internal Area)



NOT TO SCALE
This plan is for illustration purposes only



This plan is for layout guidance only. Not drawn to scale unless stated. Windows and door openings are approximate. Whilst every care is taken in the preparation of this plan, please check all dimensions, shapes and compass bearings before making any decisions reliant upon them.