



Pembroke Mews, Sunninghill

Guide Price £495,000

OSBORNE HEATH



On the ground floor there is a living room with feature fireplace, dining area, kitchen and a downstairs bathroom.

On the first floor there are two double bedrooms.

To the front of the house is a walled courtyard with an outbuilding that has power, wifi and is currently used as the study. To the rear is a courtyard garden.

Opposite the house is a private garden. There is also allocated parking and visitor parking.

Pembroke Mews is in the village of Sunninghill. Local schools include Charters, Holy Trinity, St Francis, St Michael's and The Marist. The village has a number of local high street businesses and great restaurants and pubs. Nearby places of interest include Ascot Racecourse, Coworth Park, Guards Polo Club, Legoland, The Lexicon, Swinley Forest, Wentworth Club and Windsor Great Park. Sunninghill is also convenient for the M3, M4, M25 and Heathrow Airport. The local train stations are Ascot and Sunningdale where services run to London, Guildford and Reading.

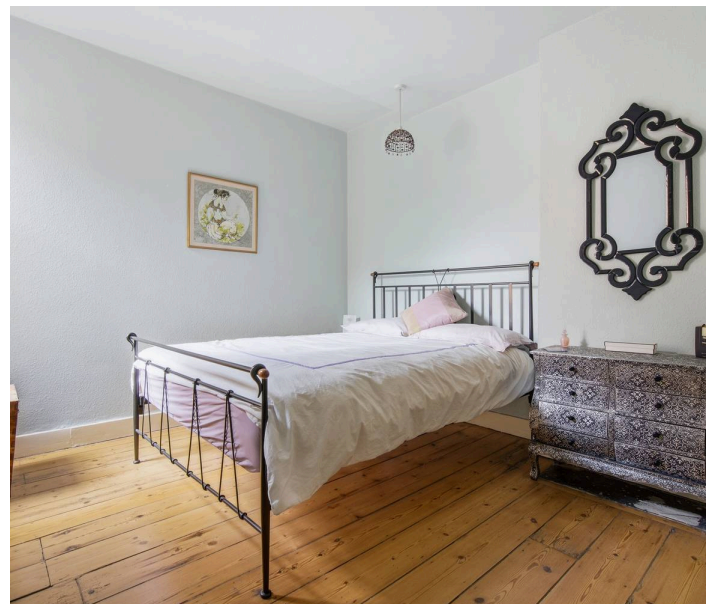
Pembroke Mews

Sunninghill

- Two Double Bedrooms
- Two Receptions
- Modern Kitchen
- Character
- Study
- Allocated Parking
- Private Garden
- Two Courtyards
- Close To Village
- No Onward Chain

Council Tax band: C

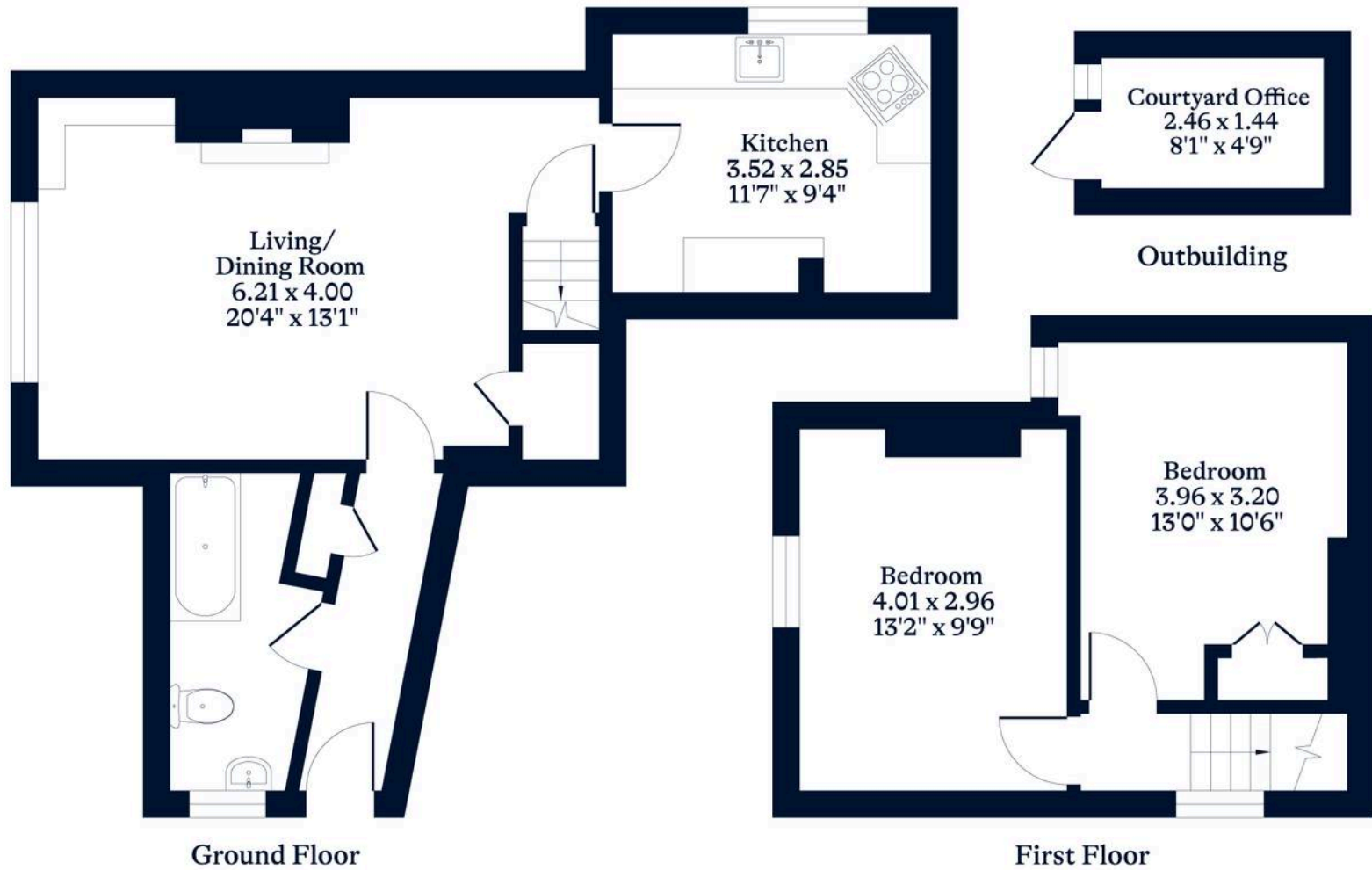
Tenure: Share of Freehold



APPROXIMATE FLOOR AREA
House - 72.37 sq m - 779 sq ft
Outbuilding - 3.54 sq m - 38 sq ft
Total - 75.91 sq m - 817 sq ft
(Gross Internal Area)



NOT TO SCALE
This plan is for illustration purposes only



OSBORNEHEATH.CO.UK

This floor plan has been created by Property Shoot Ltd following the RICS code of measuring and is for indicative guidance only. Whilst every attempt has been made to ensure the accuracy of the floor plan contained here, measurements of doors, windows and rooms are approximate and no responsibility is taken for any error, omission or misstatement. Details shown on this floorplan, including all measurements, areas and proportions cannot be guaranteed by either the provider or estate agency and should not be relied upon.