



HIO

Maple Court, Windsor
£295,000

OSBORNE HEATH



The owner of this top floor apartment has recently redecorated, changed carpets and updated heaters which can be controlled through wifi.

The apartment consists of an open-plan living space with modern Howdens kitchen, two double bedrooms with built-in wardrobes and a bathroom.

Outside there is residents and visitor parking.

Maple Court is off St Leonards Road, close to Windsor town centre. Windsor has a wide range of shops and restaurants as well as the Castle, Great Park, Racecourse and Legoland. Nearby train stations include Windsor & Eton Central and Windsor & Eton Riverside where trains run to London Paddington (via Slough) and London Waterloo. Windsor is also convenient for the M4, M25 and Heathrow Airport.

Maple Court

St. Leonards Road, Windsor

- Two Double Bedrooms
- Modern Kitchen
- Open-Plan
- Top Floor
- Parking
- No Onward Chain

Council Tax band: C

Tenure: Leasehold with 137 years remaining

EPC Energy Efficiency Rating: D

EPC Environmental Impact Rating: E

Service Charge: £2,285 pa

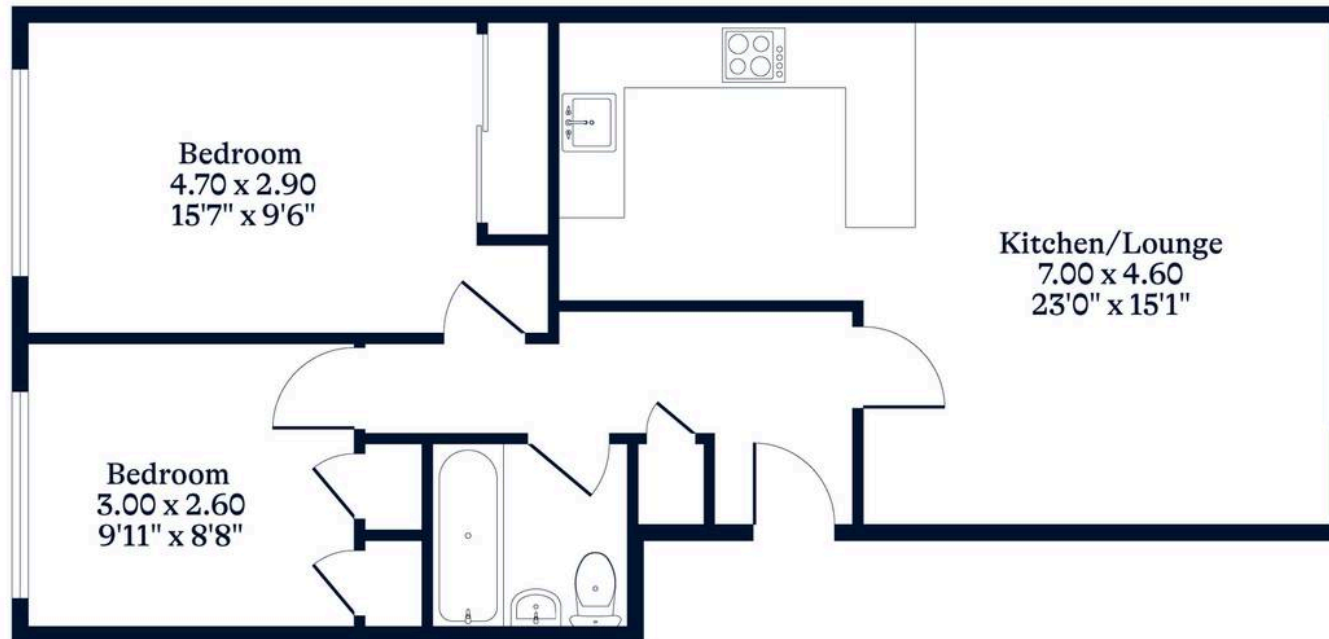
Ground Rent: £0



APPROXIMATE FLOOR AREA
Apartment - 60.53 sq m - 651 sq ft
(Gross Internal Area)



NOT TO SCALE
This plan is for illustration purposes only



OSBORNEHEATH.CO.UK

This floor plan has been created by Property Shoot Ltd following the RICS code of measuring and is for indicative guidance only. Whilst every attempt has been made to ensure the accuracy of the floor plan contained here, measurements of doors, windows and rooms are approximate and no responsibility is taken for any error, omission or misstatement.

Details shown on this floorplan, including all measurements, areas and proportions cannot be guaranteed by either the provider or estate agency and should not be relied upon.