

110



Long Hill Road, Ascot
Guide Price £450,000

OSBORNE HEATH



On the ground floor is a bedroom, bathroom and internal access to the garage.

First floor has a kitchen with a breakfast area and doors leading out to a balcony, additionally there is a living room.

The second floor has the principal bedroom with built-in wardrobes and an en suite, along with a versatile bonus special storage area.

Bakehouse Court is on Long Hill Road in Chavey Down, Ascot. Nearby places of interest include Ascot Racecourse, The Berkshire Golf Club, Coworth Park, Guards Polo Club, Sunningdale Golf Club, Swinley Forest Golf Club, Wentworth Club and Windsor Great Park. Popular schools nearby include Charters, Cheapside, Ranelagh, St Francis and Whitegrove. The nearest stations are Ascot and Martin Herons where services run to London, Reading and Guildford. Ascot is also convenient for the M3, M4, M25 and Heathrow Airport.

Long Hill Road

Ascot

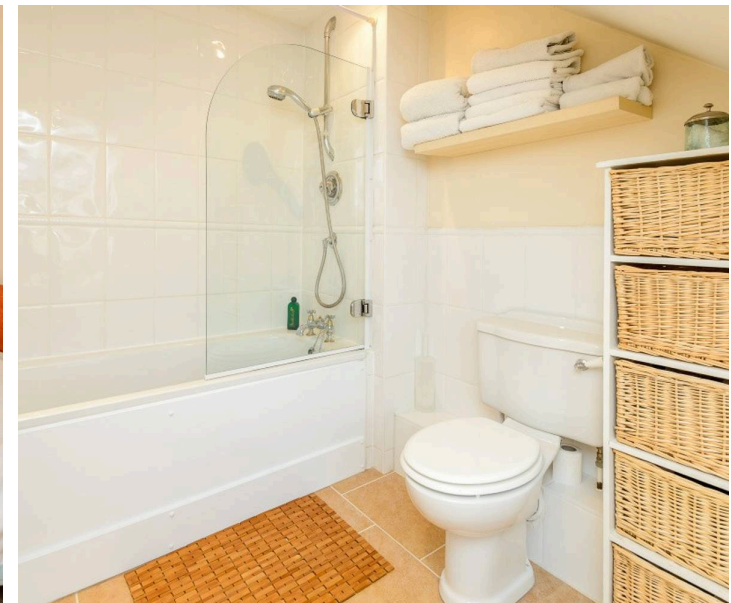
- Two Double Bedrooms
- Two Bathrooms
- Garage
- Driveway
- Balcony
- Storage Space
- Cul-De-Sac
- No Onward Chain

Council Tax band: E

Tenure: Freehold

EPC Energy Efficiency Rating: C

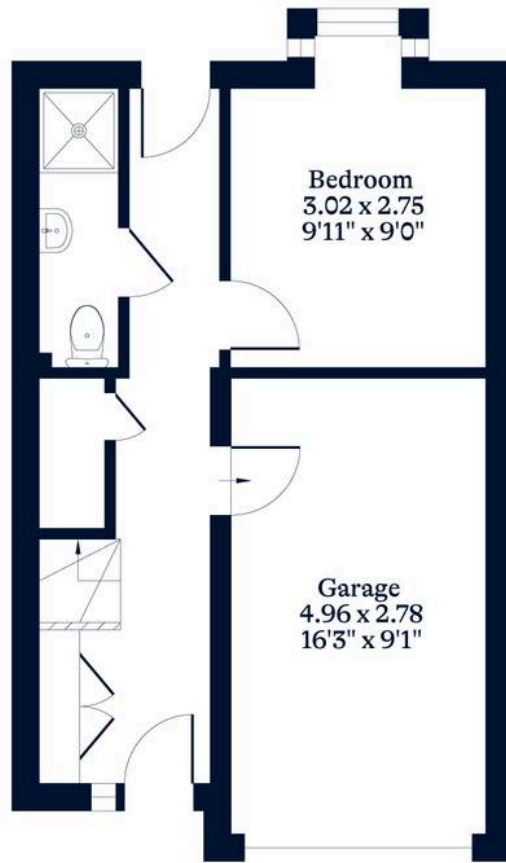
EPC Environmental Impact Rating: C



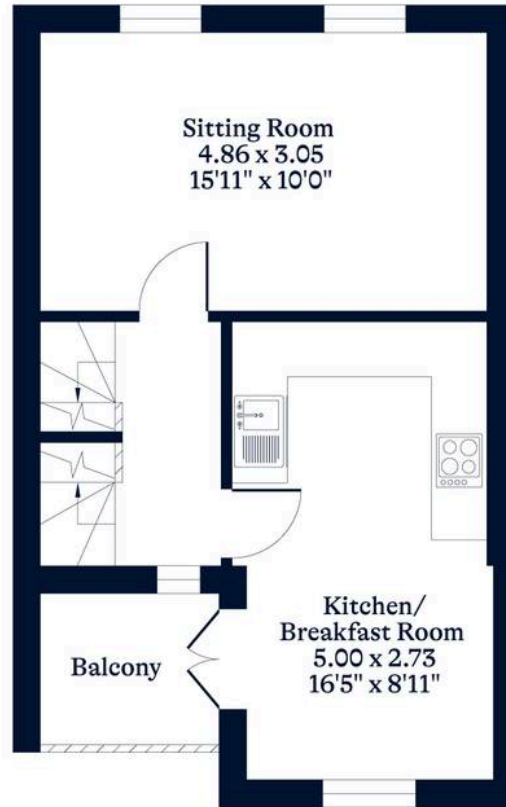
APPROXIMATE FLOOR AREA
House - 94.00 sq m - 1005 sq ft
Garage - 14.00 sq m - 148 sq ft
Total - 108.00 sq m - 1153 sq ft
(Gross Internal Area)



NOT TO SCALE
This plan is for illustration purposes only



Ground Floor



First Floor



Second Floor

OSBORNEHEATH.CO.UK

This floor plan has been created by Property Shoot Ltd following the RICS code of measuring and is for indicative guidance only. Whilst every attempt has been made to ensure the accuracy of the floor plan contained here, measurements of doors, windows and rooms are approximate and no responsibility is taken for any error, omission or misstatement.

Details shown on this floorplan, including all measurements, areas and proportions cannot be guaranteed by either the provider or estate agency and should not be relied upon.