

OIIO



Cavendish Meads, Sunninghill
£675,000

OSBORNE HEATH



On the ground floor there is a large living room with doors leading out to the garden, kitchen and dining area, utility room with a side door leading to the garage and a downstairs WC.

On the first floor there are four bedrooms with built-in wardrobes and a family bathroom.

Outside there is a driveway, double garage and side access leading to the rear west facing garden.

Cavendish Meads is a cul-de-sac in the popular village of Sunninghill. Nearby schools include Charters, St Francis, St Michael's and The Marist. The village has a number of local high street businesses and great restaurants and pubs. Nearby places of interest include Ascot Racecourse, Coworth Park, Guards Polo Club, Legoland, The Lexicon, Wentworth Club, Windsor Castle and Windsor Great Park. Sunninghill is also convenient for the M3, M4, M25 and Heathrow Airport.

Cavendish Meads

Sunninghill

- Four Bedrooms
- Two Receptions
- Detached
- Driveway
- Double Garage
- West Facing Garden
- Cul-De-Sac
- Charters School Catchment
- Walking Distance To Sunninghill Village
- No Onward Chain

Council Tax band: F

Tenure: Freehold



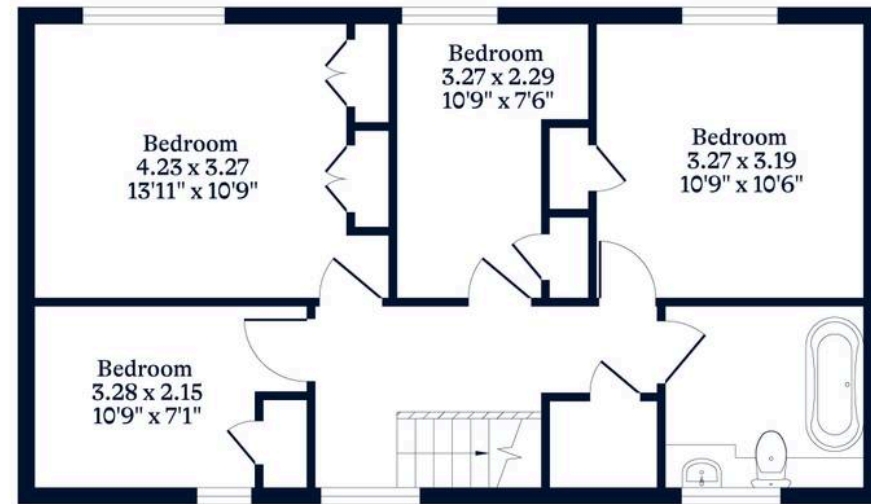
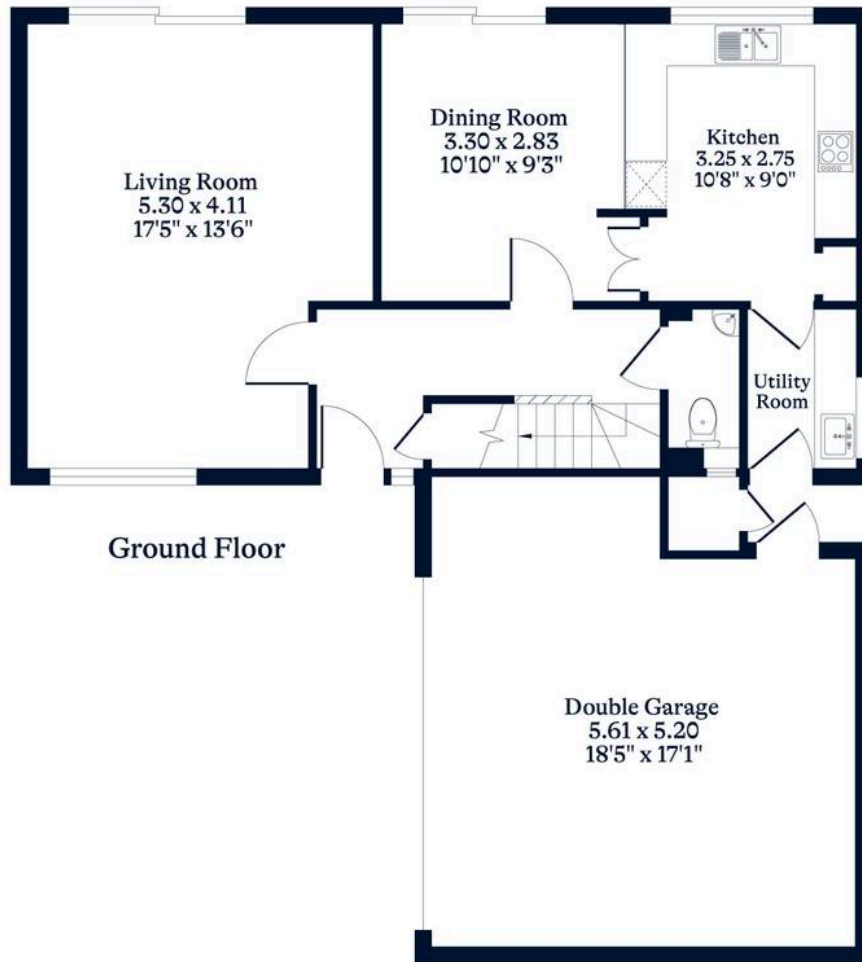


APPROXIMATE FLOOR AREA

House - 107.40 sq m - 1156 sq ft
Garage - 28.00 sq m - 302 sq ft
Total - 135.40 sq m - 1458 sq ft
(Gross Internal Area)

NOT TO SCALE

This plan is for illustration purposes only



OSBORNEHEATH.CO.UK

This floor plan has been created by Property Shoot Ltd following the RICS code of measuring and is for indicative guidance only. Whilst every attempt has been made to ensure the accuracy of the floor plan contained here, measurements of doors, windows and rooms are approximate and no responsibility is taken for any error, omission or misstatement.

Details shown on this floorplan, including all measurements, areas and proportions cannot be guaranteed by either the provider or estate agency and should not be relied upon.