



O I H

Vernon Drive, Ascot
Guide Price £795,000

OSBORNE HEATH



On the ground floor there is a living room, modern kitchen with feature island, living and dining areas plus bi-folding doors out to the garden, utility room and a downstairs WC.

On the first floor there are four bedrooms with built-in wardrobes and a modern bathroom.

Outside there is a driveway, garage for storage and side access to a rear garden with patio and lawned areas.

Vernon Drive in the popular Blythewood development. Nearby schools include Ascot Heath, Charters, Cheapside, Heathfield, LVS, Papplewick and St. Francis. The nearest train station is Ascot where services run to London, Reading and Guildford. By road Ascot is convenient for the M3, M4, M25 and Heathrow Airport. Nearby points of interest include Ascot Racecourse, Guards Polo Club, Legoland, The Lexicon, Sunningdale Golf Club, Wentworth Club and Windsor Great Park.

Vernon Drive

Ascot

- Four Bedrooms
- Two Receptions
- Modern Kitchen
- Utility Room
- Modern Bathroom
- Detached
- Driveway
- Garage
- Close To Ascot High Street
- Charters Catchment

Council Tax band: F

Tenure: Freehold

EPC Energy Efficiency Rating:

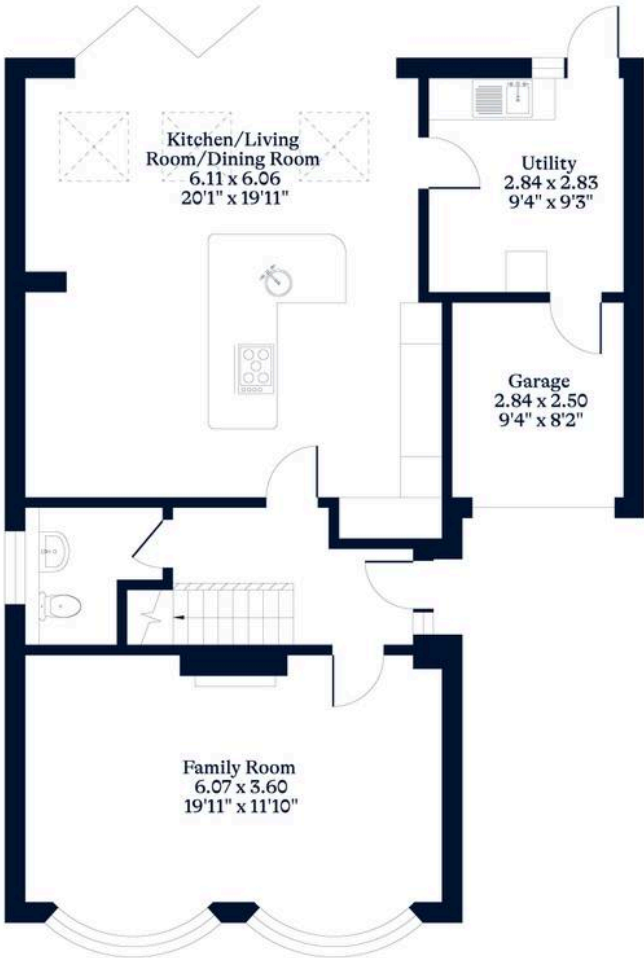
EPC Environmental Impact Rating:



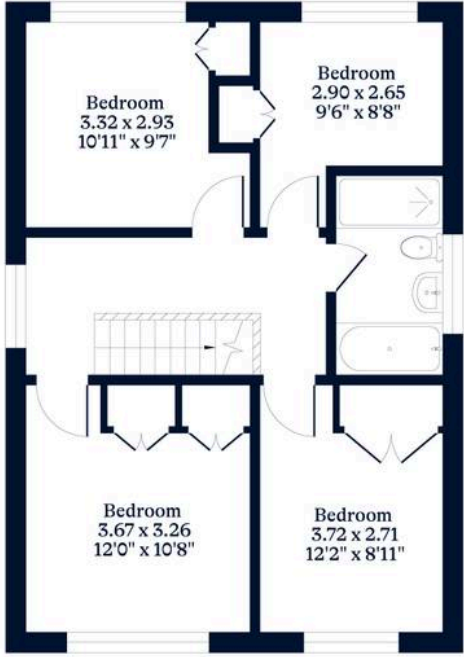
APPROXIMATE FLOOR AREA
 House - 136.02 sq m - 1464 sq ft
 Garage - 7.10 sq m - 76 sq ft
 Total - 143.12 sq m - 1540 sq ft
 (Gross Internal Area)



NOT TO SCALE
 This plan is for illustration purposes only



Ground Floor



First Floor

OSBORNEHEATH.CO.UK

This floor plan has been created by Property Shoot Ltd following the RICS code of measuring and is for indicative guidance only. Whilst every attempt has been made to ensure the accuracy of the floor plan contained here, measurements of doors, windows and rooms are approximate and no responsibility is taken for any error, omission or misstatement. Details shown on this floorplan, including all measurements, areas and proportions cannot be guaranteed by either the provider or estate agency and should not be relied upon.