

110



Roundshead Drive, Warfield
Guide Price £950,000

OSBORNE HEATH



Downstairs there is a double aspect living room, open plan, kitchen living and dining area which is centred around the kitchens island, study, utility room and a downstairs WC.

Upstairs is a principal bedroom with built-in wardrobes and a modern en suite, three further bedrooms all with fitted wardrobes and a modern family bathroom.

Outside there is a gated driveway parking for several vehicles, a double garage and a separate annex/study with a en suite.

Roundshead Drive is a private tree lined road and a cul-de-sac. Local schools include Garth Hill, Holly Spring, Lambrook, LVS, Ranelagh, St Josephs, Warfield and Whitegrove. The nearest train stations are Bracknell and Martins Heron where services run to London, Reading and Guildford via Ascot. By road Warfield convenient for the M3, M4, M25 and Heathrow Airport. Nearby places of interest include Ascot Racecourse, Coworth Park, Legoland, The Lexicon, Wentworth Club, Windsor Castle and Windsor Great Park.

Roundshead Drive

Warfield

- Four Bedrooms
- Three Receptions
- Three Bathroom
- Detached
- Gated
- Driveway
- Double Garage
- Cul-De-Sac

Council Tax band: G

Tenure: Freehold

EPC Energy Efficiency Rating: C

EPC Environmental Impact Rating: D

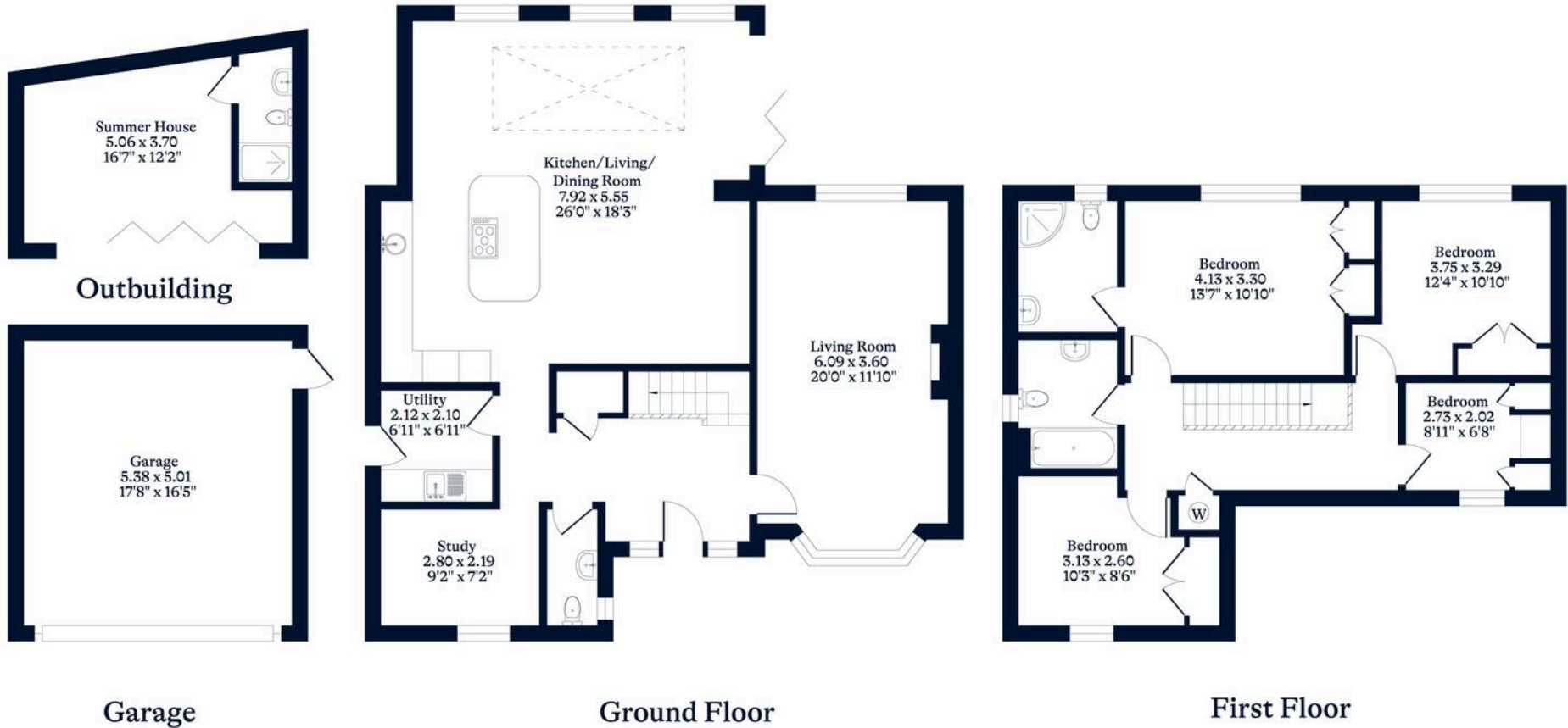




APPROXIMATE FLOOR AREA

House - 161.05 sq m - 1734 sq ft
Garage - 27.22 sq m - 293 sq ft
Outbuilding - 16.86 sq m - 181 sq ft
Total - 205.13 sq m - 2208 sq ft
(Gross Internal Area)

NOT TO SCALE
This plan is for illustration purposes only



OSBORNEHEATH.CO.UK

This floor plan has been created by Property Shoot Ltd following the RICS code of measuring and is for indicative guidance only. Whilst every attempt has been made to ensure the accuracy of the floor plan contained here, measurements of doors, windows and rooms are approximate and no responsibility is taken for any error, omission or misstatement. Details shown on this floorplan, including all measurements, areas and proportions cannot be guaranteed by either the provider or estate agency and should not be relied upon.