

O
H



Fairfield House, Sunningdale
Guide Price **£530,000**

OSBORNE HEATH



This ground floor gated apartment has a large main principal bedroom with built in wardrobes, en-suite. Further accommodation is a double bedroom and bathroom. The property has a large open plan living/diner/kitchen.

Outside Fairfield house is a gated development with access to lawned communal grounds, allocated parking, and visitors parking.

Fairfield House is located off the London Road close to the centre of Sunningdale and Sunningdale Golf Club. Other local places of interest include Ascot Racecourse, Coworth Park, Guards Polo Club, Virginia Water Lake, Wentworth Club and Windsor Great Park. The station in Sunningdale runs trains to London Waterloo and Reading. Sunningdale is also convenient for the M3, M4, M25 and Heathrow Airport.

Fairfield House, London Road

Sunningdale

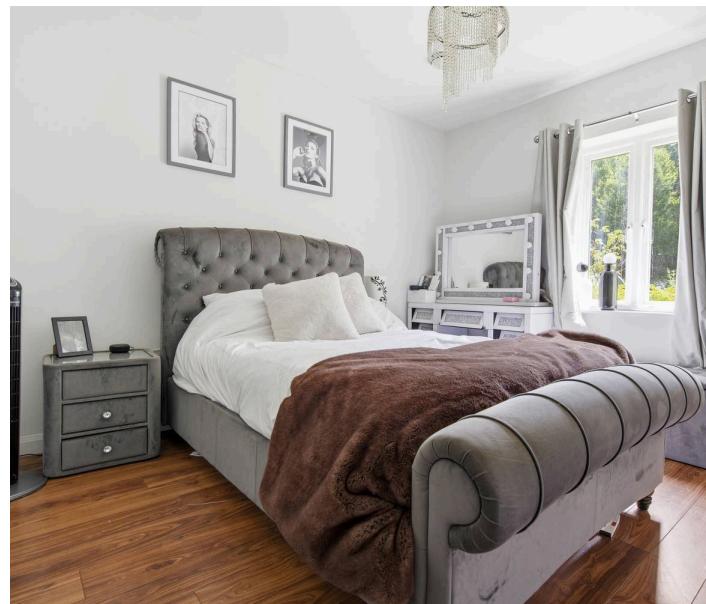
- Two Double Bedrooms
- Two Bathrooms
- Ground Floor
- Gated
- Allocated Parking
- Walking Distance To Sunningdale Station and Shops
- Communal Gardens
- No Onward Chain

Council Tax band: E

Tenure: Leasehold

EPC Energy Efficiency Rating: B

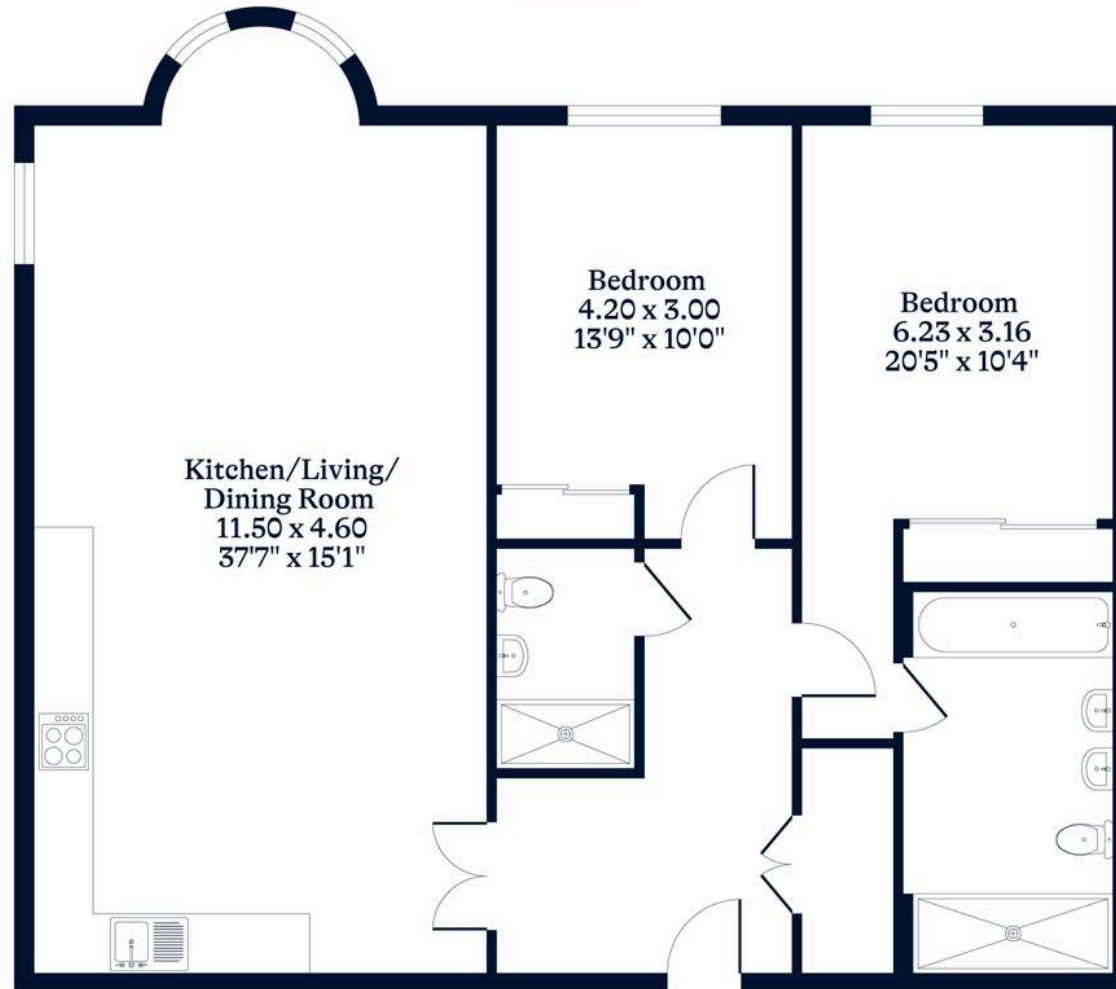
EPC Environmental Impact Rating: B



APPROXIMATE FLOOR AREA
Apartment - 103.00 sq m - 1108 sq ft
(Gross Internal Area)



NOT TO SCALE
This plan is for illustration purposes only



OSBORNEHEATH.CO.UK

This floor plan has been created by Property Shoot Ltd following the RICS code of measuring and is for indicative guidance only. Whilst every attempt has been made to ensure the accuracy of the floor plan contained here, measurements of doors, windows and rooms are approximate and no responsibility is taken for any error, omission or misstatement.

Details shown on this floorplan, including all measurements, areas and proportions cannot be guaranteed by either the provider or estate agency and should not be relied upon.