

HIO

St. Leonards Hill, Windsor
£1,100,000

OSBORNE HEATH



The property is need of a full extensive refurbishment.

Downstairs there is a kitchen, utility, study, living and dining room which leads to a conservatory with doors out to the garden and downstairs WC.

Upstairs there are four double bedrooms, with an en suite and balcony to the primary bedroom, and a family bathroom.

Outside there is driveway parking for several vehicles, a double garage and side access to a large rear garden.

St Leonards Hill is sought after private road in Windsor, which has a wide range of shops and restaurants as well as the Castle, Great Park, Racecourse and Legoland. Nearby train stations include Windsor & Eton Central and Windsor & Eton Riverside where trains run to London Paddington (via Slough) and London Waterloo. Nearby schools include Eton, Lambrook, The Kings House, Oakfield, Papplewick, The Queen Anne, St Edwards, St George's School, Trinity St Stephen, Upton House, Windsor Boys and Windsor Girls. Windsor is also convenient for the M4, M25 and Heathrow Airport.

St. Leonards Hill

Windsor

- Four Bedrooms
- Two Bathrooms
- Large Driveway
- Large Garden
- Detached
- Potential To Extend
- St Leonards Hill Estate
- No Onward Chain

Council Tax band: G

Tenure: Freehold

EPC Energy Efficiency Rating: D

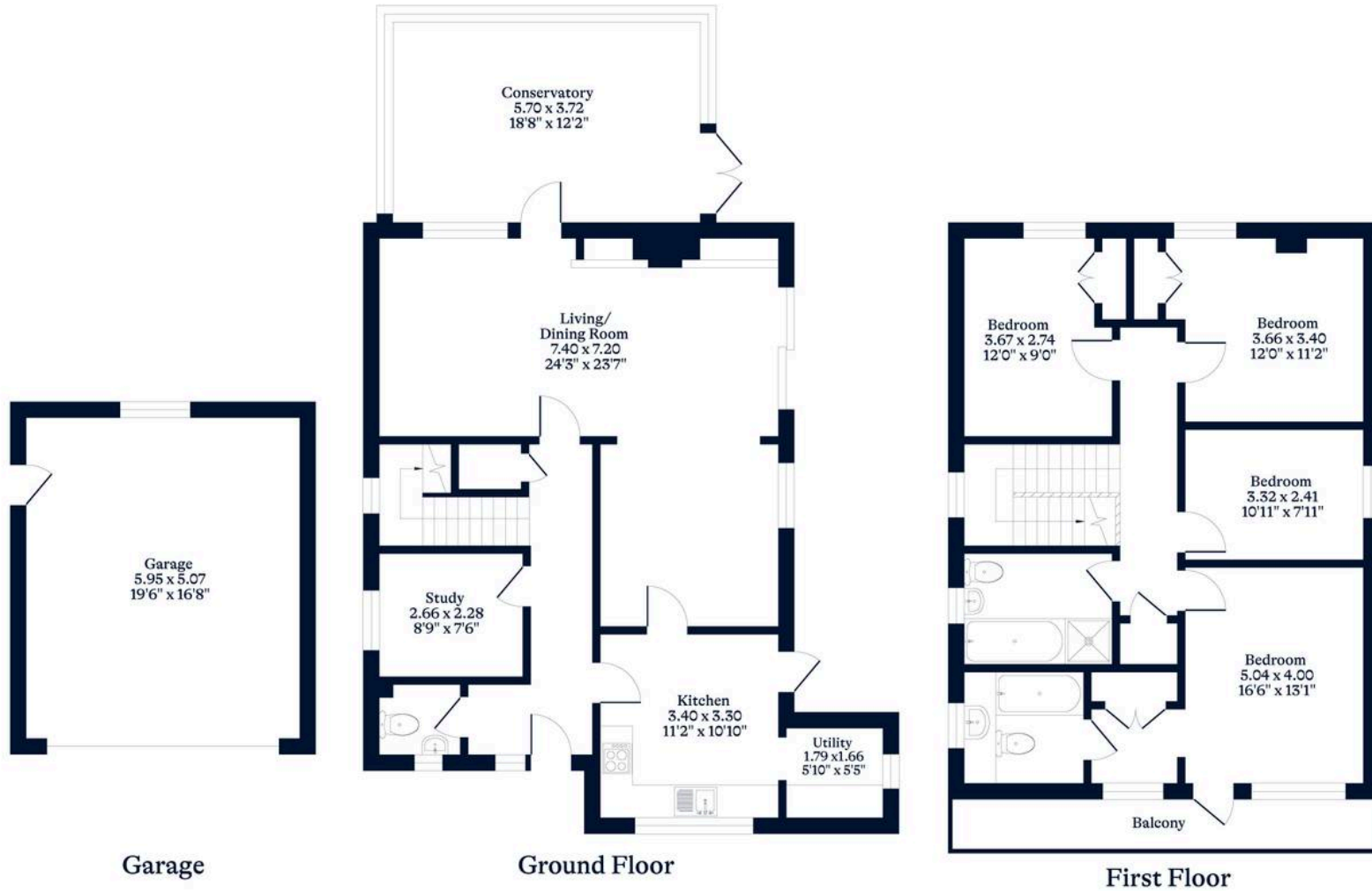
EPC Environmental Impact Rating:



APPROXIMATE FLOOR AREA
House - 175.71 sq m - 1891 sq ft
Garage - 30.16 sq m - 324 sq ft
Total - 205.87 sq m - 2215 sq ft
(Gross Internal Area)



NOT TO SCALE
This plan is for illustration purposes only



OSBORNEHEATH.CO.UK

This floor plan has been created by Property Shoot Ltd following the RICS code of measuring and is for indicative guidance only. Whilst every attempt has been made to ensure the accuracy of the floor plan contained here, measurements of doors, windows and rooms are approximate and no responsibility is taken for any error, omission or misstatement. Details shown on this floorplan, including all measurements, areas and proportions cannot be guaranteed by either the provider or estate agency and should not be relied upon.