

110



Scotts Mews Priory Road, Ascot
£2,500 PCM

OSBORNE HEATH



The ground floor has a modern kitchen, living and dining room leading out to the garden, and a downstairs WC

The first floor has two double bedrooms with built-in wardrobes, a large family bathroom. The top floor has the large primary bedroom with large en-suite shower room.

The rear garden is low maintenance and has a gate out to an allocated parking space for two cars. Further visitor parking is available.

Scotts Mews is a small development of mews properties located in Chavey Down, Ascot. Nearby are a number of popular schools including Ascot Heath Infant and Junior School, Charters, St Joseph's Primary School and Ranelagh Secondary School. The nearest train stations are Ascot and Martins Heron where services run to London, Reading and Guildford. By road Ascot is convenient for the M3, M4, M25 and Heathrow Airport. Nearby points of interest include Ascot Racecourse, Coworth Park, Legoland, Wentworth Club, Windsor Castle and Windsor Great Park.

Scotts Mews Priory Road

Ascot

- Three Double Bedrooms
- Two Bathrooms
- Downstairs WC
- Modern Kitchen
- Low Maintenance Garden
- Allocated Parking
- Overlooking Woodland
- Available Immediately

Council Tax band: E

Tenure: Freehold

EPC Energy Efficiency Rating: C

EPC Environmental Impact Rating: D



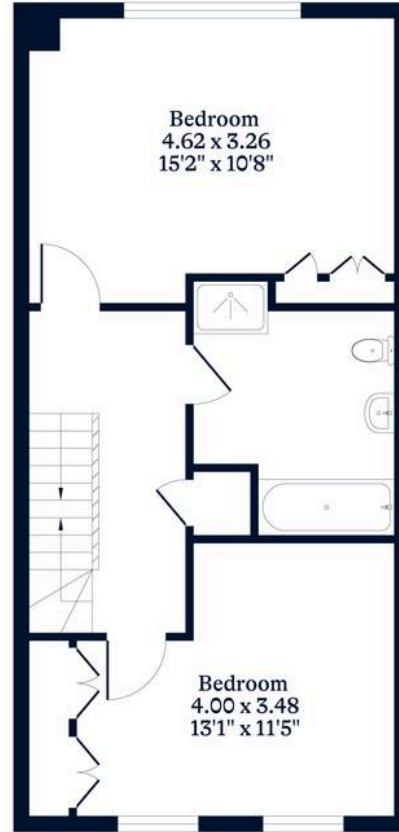
APPROXIMATE FLOOR AREA
House - 126.75 sq m - 1364 sq ft
(Gross Internal Area)



NOT TO SCALE
This plan is for illustration purposes only



Ground Floor



First Floor



Second Floor

OSBORNEHEATH.CO.UK

This floor plan has been created by Property Shoot Ltd following the RICS code of measuring and is for indicative guidance only. Whilst every attempt has been made to ensure the accuracy of the floor plan contained here, measurements of doors, windows and rooms are approximate and no responsibility is taken for any error, omission or misstatement.

Details shown on this floorplan, including all measurements, areas and proportions cannot be guaranteed by either the provider or estate agency and should not be relied upon.