

O I H



Victoria Road, Ascot
Guide Price £650,000

OSBORNE HEATH



The ground floor is completely open-plan comprising of a living area, dining area and a fully integrated kitchen with breakfast bar and bi-folding doors out to a large rear garden.

On the first floor are three bedrooms, two of which are doubles, and the other currently being used as a walk-in wardrobe, plus a modern family bathroom.

The second floor has a double bedroom and an en suite shower room.

Outside there is side access to the rear garden which has a log cabin with full power and wi-fi.

Victoria Road is in South Ascot village near Ascot train station where services run to London, Reading and Guildford. The local primary schools are South Ascot Village and St. Francis and the house is within Charters catchment area. Nearby places of interest include Ascot Racecourse, Legoland, The Lexicon, Wentworth Club, Windsor Castle and Windsor Great Park. By road Ascot is convenient for the M3, M4, M25 and Heathrow Airport.

Victoria Road

Ascot

- Four Bedrooms
- Two Bathrooms
- Semi-Detached
- Character
- Garden Studio
- Close To Station
- Charters Catchment

Council Tax band: D

Tenure: Freehold

EPC Energy Efficiency Rating: G

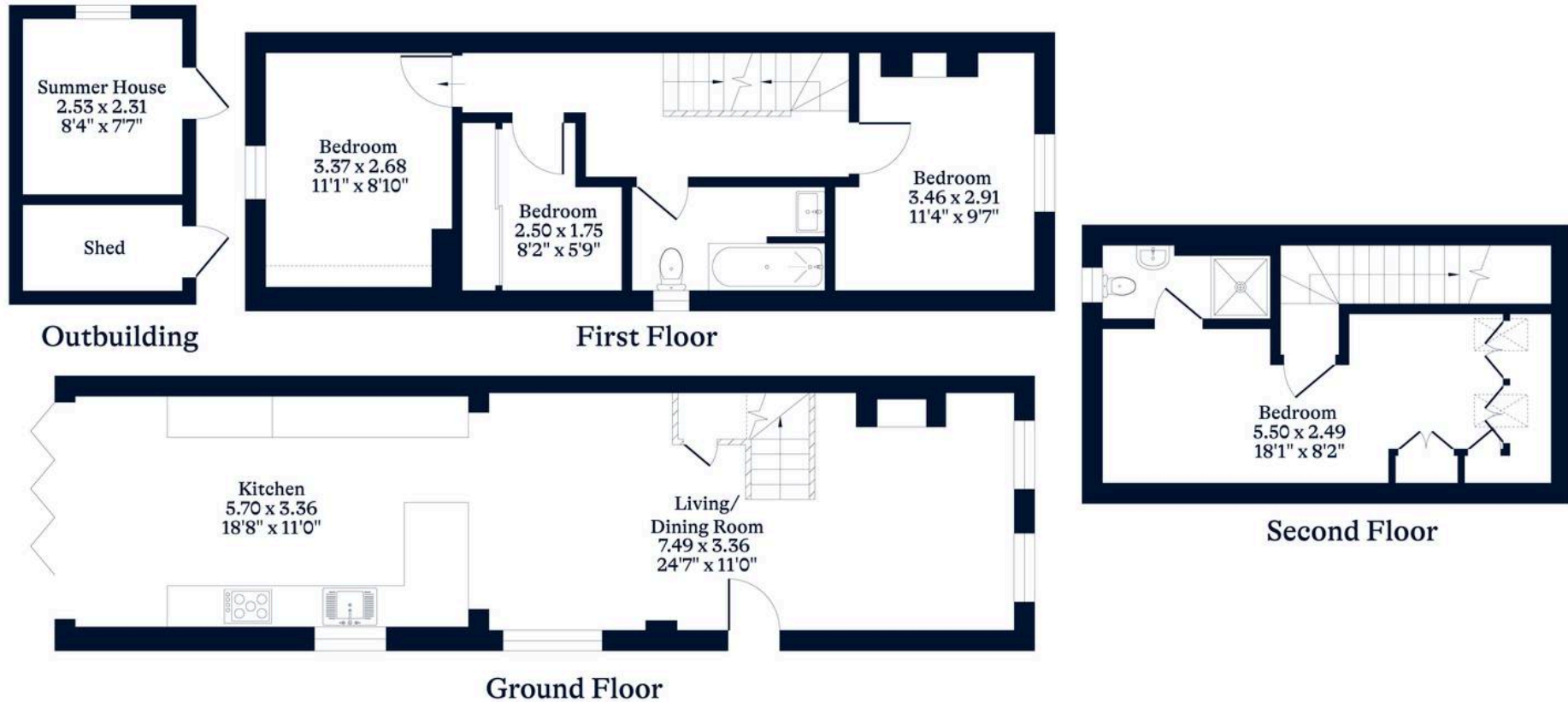
EPC Environmental Impact Rating: G



APPROXIMATE FLOOR AREA
House - 108.22 sq m - 1165 sq ft
Outbuilding - 9.23 sq m - 99 sq ft
Total - 117.45 sq m - 1264 sq ft
(Gross Internal Area)



NOT TO SCALE
This plan is for illustration purposes only



OSBORNEHEATH.CO.UK

This floor plan has been created by Property Shoot Ltd following the RICS code of measuring and is for indicative guidance only. Whilst every attempt has been made to ensure the accuracy of the floor plan contained here, measurements of doors, windows and rooms are approximate and no responsibility is taken for any error, omission or misstatement. Details shown on this floorplan, including all measurements, areas and proportions cannot be guaranteed by either the provider or estate agency and should not be relied upon.