

 3  2  3



St. Leonards Road, *Windsor*

OSBORNE HEATH

An extended and modernised three bedroom, three bathroom Victorian house situated close to Windsor town centre with no onward chain.

The ground floor has a living room with an open fire, sitting room, kitchen centred around a feature island leading to a dining area with bi-folding doors out to the rear garden, and a downstairs WC.

On the first floor there is the principal bedroom with an en suite shower room, further bedroom and a stylish family bathroom.

On the second floor there is double bedroom with an en suite shower room and built-in wardrobes.

To the rear of the property is the landscaped garden with a paved patio area and pergola, artificial grass, shrub/flower beds and a brick built shed at the rear of the garden.

Windsor has a wide range of shops and restaurants as well as the Castle, Great Park, Racecourse and Legoland. Nearby train stations include Windsor & Eton Central and Windsor & Eton Riverside where trains run to London Paddington (via Slough) and London Waterloo. Windsor is also convenient for the M4, M25 and Heathrow Airport. The area also has a good selection of state, private and international schools, including Trevelyan Middle School, which is almost opposite the property.

EPC rating C. Council Tax band D.

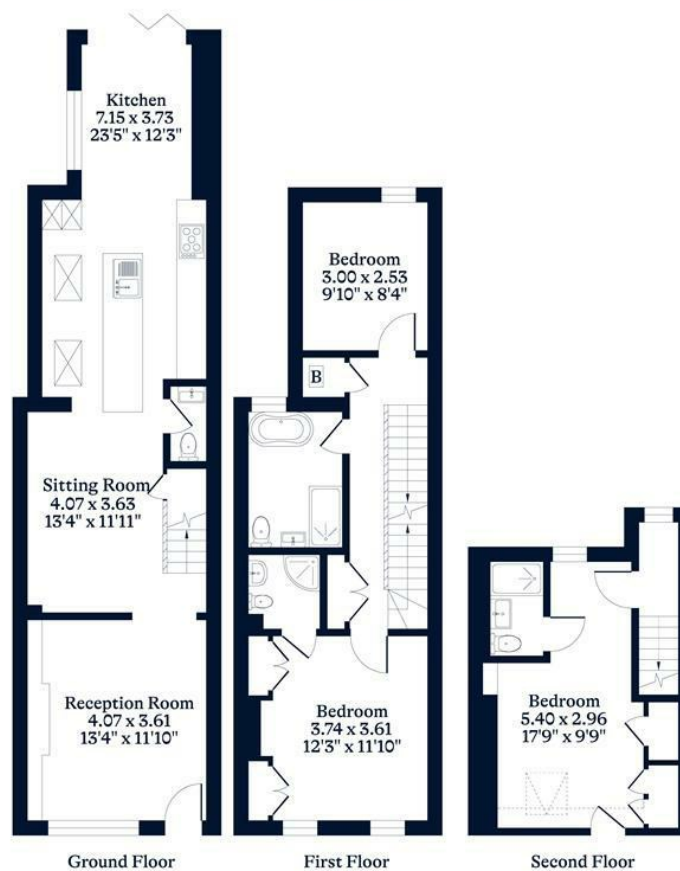




APPROXIMATE FLOOR AREA
House - 115.40 sq m - 1242 sq ft
(Gross Internal Area)



NOT TO SCALE
This plan is for illustration purposes only



This plan is for layout guidance only. Not drawn to scale unless stated. Windows and door openings are approximate. Whilst every care is taken in the preparation of this plan, please check all dimensions, shapes and compass bearings before making any decisions reliant upon them.

OSBORNEHEATH.CO.UK