

O/H



Bakehouse Court Long Hill Road

Ascot

Guide Price **£500,000**

OSBORNE HEATH



On the ground floor there is a modern kitchen with breakfast bar, living room with doors out to the garden and a downstairs WC.

The first floor has a principal bedroom with built-in wardrobes and an en suite, two further double bedrooms and a family bathroom.

To the rear of the house is a courtyard garden with a gate out to an allocated parking space and garage.

Bakehouse Court is on Long Hill Road in Chavey Down, Ascot. Nearby places of interest include Ascot Racecourse, The Berkshire Golf Club, Coworth Park, Guards Polo Club, Sunningdale Golf Club, Swinley Forest Golf Club, Wentworth Club and Windsor Great Park. Popular schools nearby include Charters, Cheapside, Ranelagh, St Francis and Whitegrove. The nearest stations are Ascot and Martin Herons where services run to London, Reading and Guildford. Ascot is also convenient for the M3, M4, M25 and Heathrow Airport.

Bakehouse Court Long Hill Road

Ascot

- Three Double Bedrooms
- Two Bathrooms
- Semi- Detached
- Modern Kitchen
- Allocated Parking
- Garage
- No Onward Chain

Council Tax band: E

Tenure: Freehold

EPC Energy Efficiency Rating: C

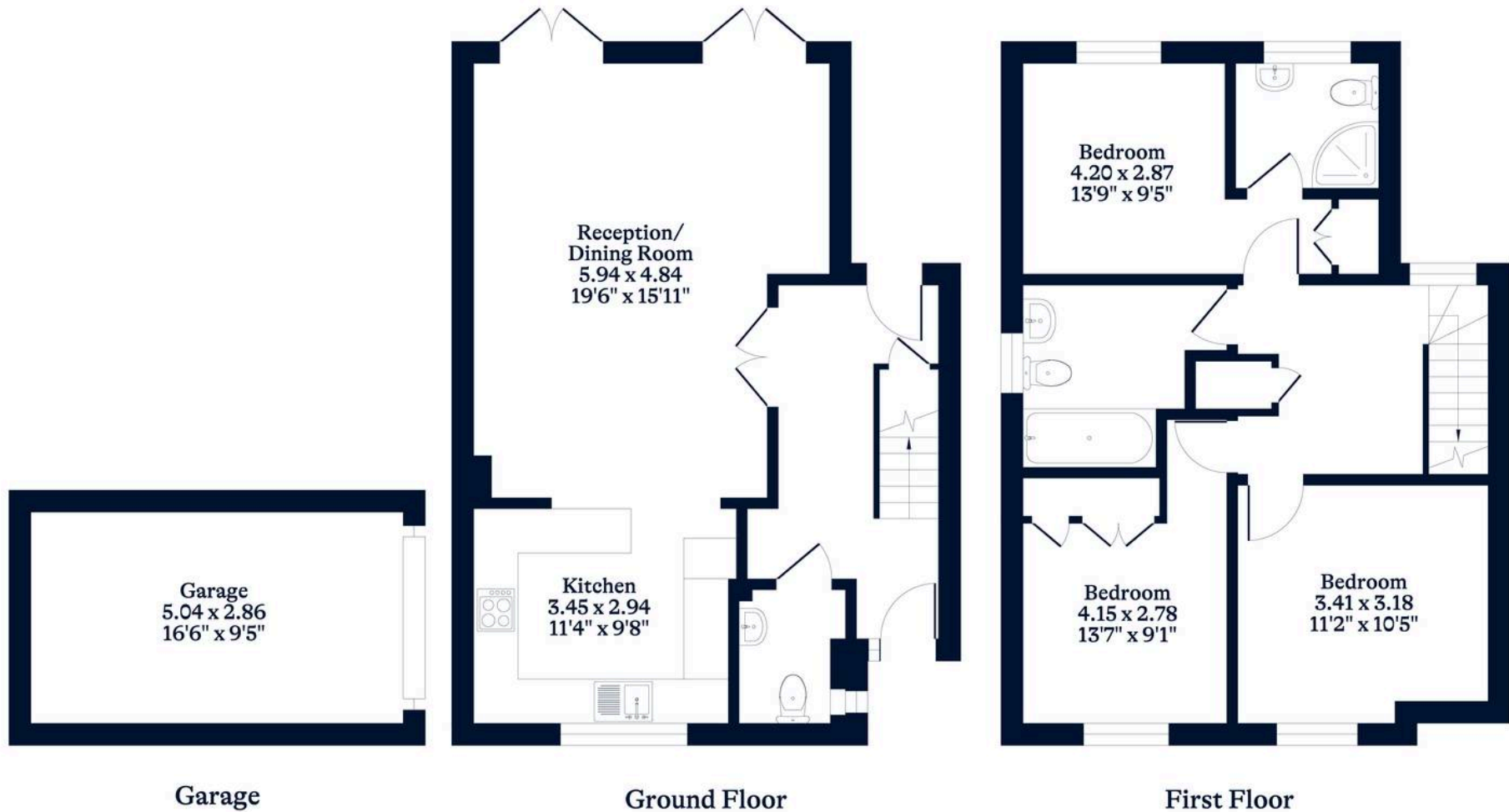
EPC Environmental Impact Rating: D



APPROXIMATE FLOOR AREA
House - 101.66 sq m - 1094 sq ft
Garage - 14.41 sq m - 155 sq ft
Total - 116.07 sq m - 1249 sq ft
(Gross Internal Area)



NOT TO SCALE
This plan is for illustration purposes only



This plan is for layout guidance only. Not drawn to scale unless stated. Windows and door openings are approximate. Whilst every care is taken in the preparation of this plan, please check all dimensions, shapes and compass bearings before making any decisions reliant upon them.