

 5  3  3



Steeple Point, *Ascot*

OSBORNE HEATH

A five bedroom, three bathroom detached family home with a driveway and double garage in a gated cul-de-sac close to Ascot high street and Station. No onward chain,

On the ground floor there is a living room, kitchen with a feature island, living and dining areas, utility room, study and a downstairs WC.

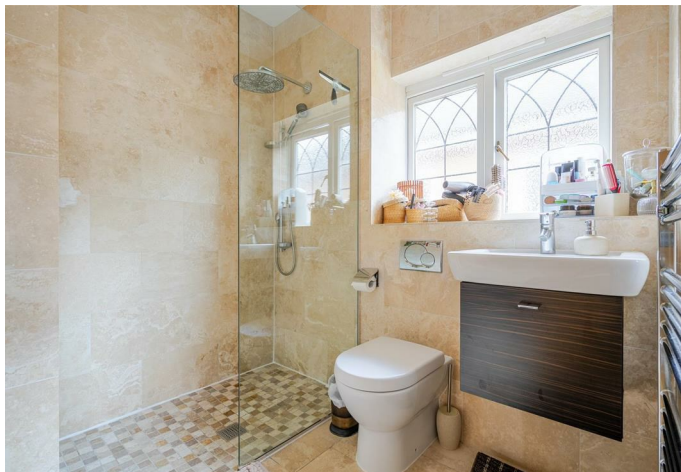
On the first floor is the principal bedroom with a dressing room and en suite, an en suite guest bedroom, three further bedrooms and a family bathroom.

To the front of the house is driveway parking, a double garage and side access leading rear garden.

Steeple Point is a gated cul-de-sac at the foot of Ascot high street. Popular local schools include Charters, Cheapside, Lambrook, LVS, The Marist, Papplewick, St Francis, St George's and St Mary's. Nearby places of interest include Ascot Racecourse, The Berkshire Golf Club, Coworth Park, Guards Polo Club, Legoland, The Lexicon, Sunningdale Golf Club, Swinley Forest, Wentworth Club and Windsor Great Park. Ascot train station runs services to London, Reading and Guildford and by road Ascot is convenient for the M3, M4, M25 and Heathrow Airport.

EPC rating C. Council Tax band G.





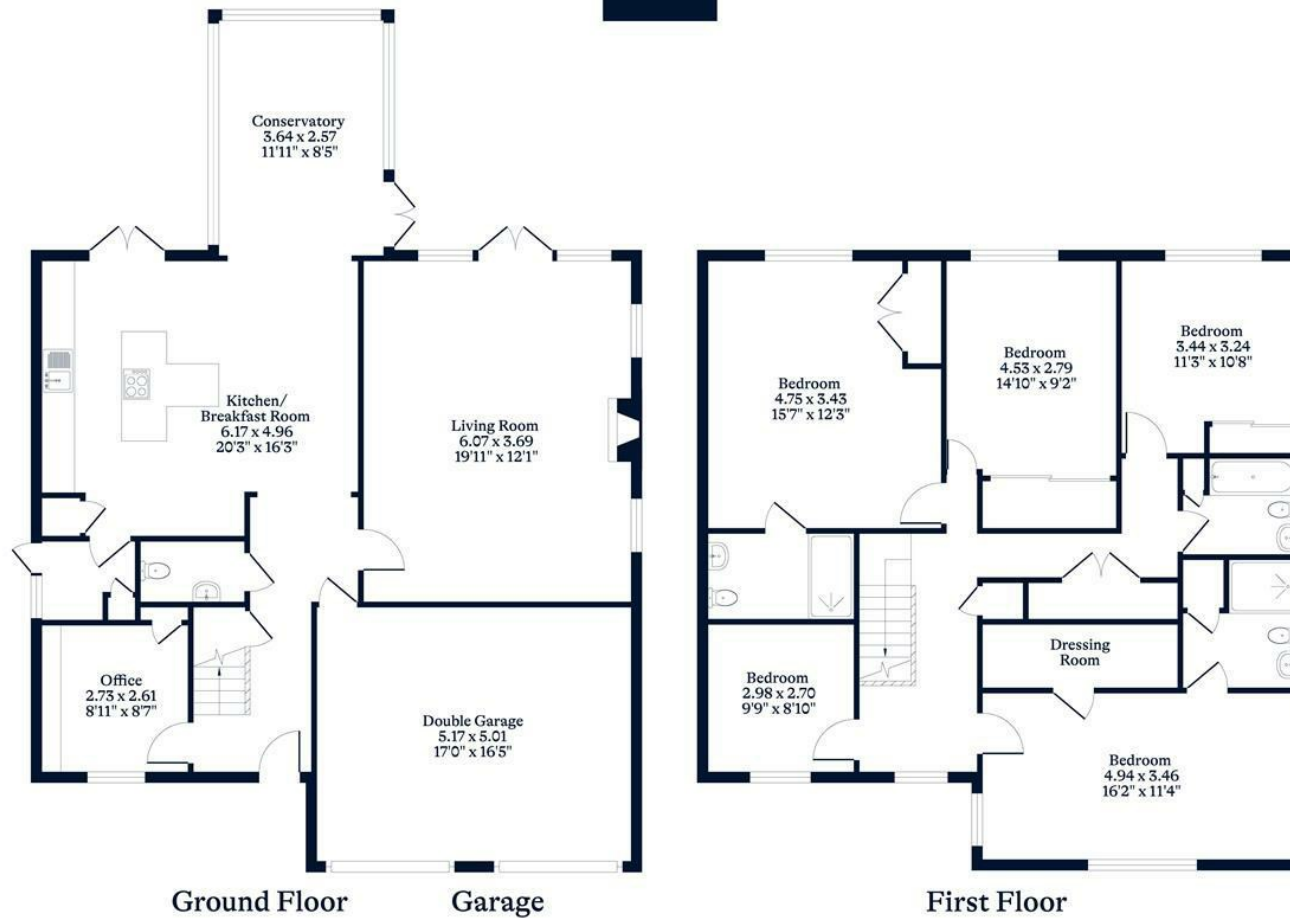
APPROXIMATE FLOOR AREA

House - 208.80 sq m - 2248 sq ft
Garage - 26.92 sq m - 290 sq ft
Total - 235.72 sq m - 2538 sq ft
(Gross Internal Area)

OH

NOT TO SCALE

This plan is for illustration purposes only



OSBORNEHEATH.CO.UK

This floor plan has been created by Property Shoot Ltd following the RICS code of measuring and is for indicative guidance only. Whilst every attempt has been made to ensure the accuracy of the floor plan contained here, measurements of doors, windows and rooms are approximate and no responsibility is taken for any error, omission or misstatement. Details shown on this floorplan, including all measurements, areas and proportions cannot be guaranteed by either the provider or estate agency and should not be relied upon.

©PROPERTYSHOOT