

 3  1  1



Selwyn Close, *Windsor*

OSBORNE HEATH

A three bedroom house with driveway and garage in a cul-de-sac.

The ground floor has a living and dining room with patio doors leading out to the garden, separate kitchen and a downstairs WC.

Upstairs there are two double bedrooms and a third bedroom that could also be used as a study, and family bathroom.

Outside there is a driveway, garage and a rear garden.

Selwyn Close is a small cul-de-sac to the west of Windsor. There is a range of shopping facilities close by including Tesco and Aldi, with additional facilities in Windsor town centre. Windsor has a wide range of shops and restaurants as well as the Castle, Great Park, Racecourse and Legoland. Nearby train stations include Windsor & Eton Central and Windsor & Eton Riverside where trains run to London Paddington (via Slough) and London Waterloo, and there is bus stop close by including the GoToGate bus service to Heathrow Terminal 5. The area is well served by a number of state, private and international schools and there are various parks close by including Alexander, Dedworth, Homer and Sutherland Grange. Windsor is also convenient for the M4, M25 and Heathrow Airport.

EPC rating C. Council Tax band E. Tenancy Length 12-36 Months. Deposit £2,480. Holding Deposit £496.





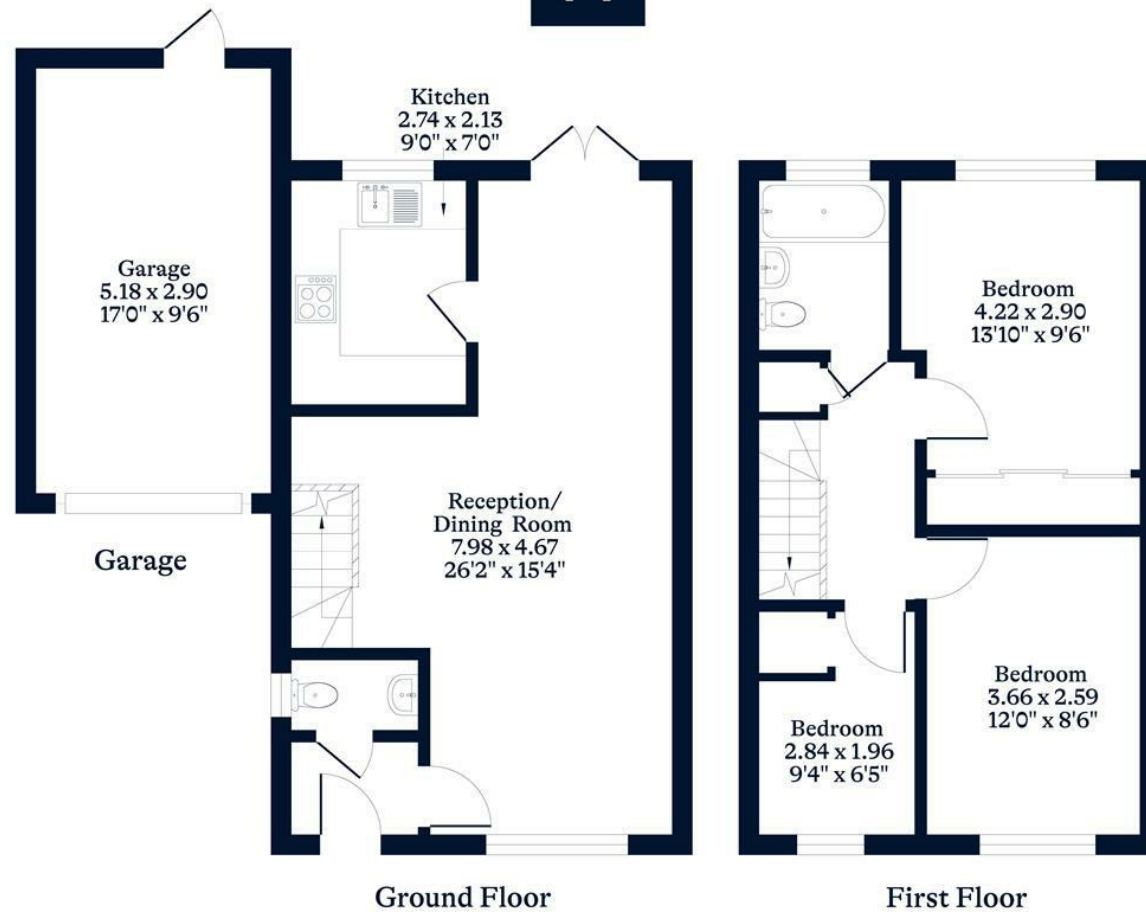
APPROXIMATE FLOOR AREA

House - 74.54 sq m - 802 sq ft
Garage - 15.02 sq m - 162 sq ft
Total - 89.56 sq m - 964 sq ft
(Gross Internal Area)

O
—
H

NOT TO SCALE

This plan is for illustration purposes only



OSBORNEHEATH.CO.UK

This floor plan has been created by Property Shoot Ltd following the RICS code of measuring and is for indicative guidance only. Whilst every attempt has been made to ensure the accuracy of the floor plan contained here, measurements of doors, windows and rooms are approximate and no responsibility is taken for any error, omission or misstatement. Details shown on this floorplan, including all measurements, areas and proportions cannot be guaranteed by either the provider or estate agency and should not be relied upon.

©PROPERTYSHOOT