

 2  1  1



Lawrence Court, *Windsor*

OSBORNE HEATH

A two double bedroom ground floor apartment in a gated development close to Windsor town centre, with a garage, share of freehold and no onward chain.

This apartment has a kitchen, bathroom, two double bedrooms and a living room with patio doors leading out to the communal gardens.

Outside, there is a garage, well kept gardens, bike store, gated access to the residents parking and a secure entry phone system.

Lawrence Court is on Alma Road which is a sought after address in Windsor town centre. Windsor has a wide range of shops and restaurants as well as the Castle, Great Park, Racecourse and Legoland. Nearby train stations include Windsor & Eton Central and Windsor & Eton Riverside where trains run to London Paddington (via Slough) and London Waterloo. Nearby schools include Eton, The Kings House, Oakfield, The Queen Anne, St Edwards, Trevelyan, Trinity St Stephen, Upton House, Windsor Boys and Windsor Girls. Windsor is also convenient for the M4, M25 and Heathrow Airport

EPC rating E. Council Tax band D. Share of freehold with an underlying lease of 983 years. Service Charge £1,525 pa. Ground rent £0 pa.



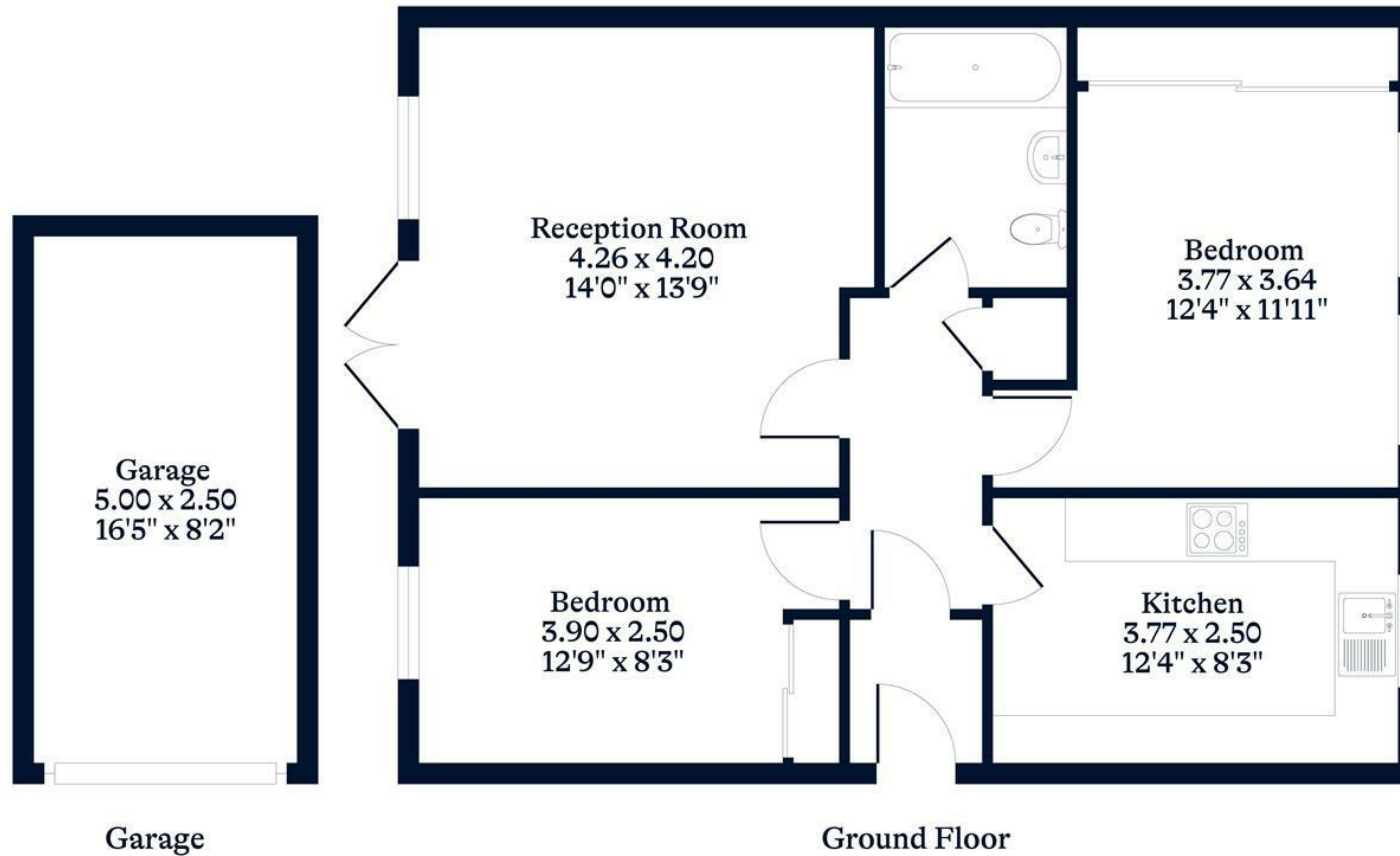


APPROXIMATE FLOOR AREA

Apartment - 60.60 sq m - 652 sq ft
Garage - 12.50 sq m - 135 sq ft
Total - 73.10 sq m - 787 sq ft
(Gross Internal Area)

**O
—
H****NOT TO SCALE**

This plan is for illustration purposes only

**OSBORNEHEATH.CO.UK**

This floor plan has been created by Property Shoot Ltd following the RICS code of measuring and is for indicative guidance only. Whilst every attempt has been made to ensure the accuracy of the floor plan contained here, measurements of doors, windows and rooms are approximate and no responsibility is taken for any error, omission or misstatement. Details shown on this floorplan, including all measurements, areas and proportions cannot be guaranteed by either the provider or estate agency and should not be relied upon.

©PROPERTYSHOOT