

 3  2  1



# Arthur Road, *Windsor*

OSBORNE HEATH



# A refurbished three bedroom period property with a south facing garden in Windsor town centre.

On the ground floor there is a bay fronted living with plantation shutters, dining area with a period fireplace, and a modern kitchen leading out to the south facing garden.

The first floor has three bedrooms and a family bathroom.

Windsor has a wide range of shops and restaurants as well as the Castle, Great Park, Racecourse and Legoland. Nearby train stations include Windsor & Eton Central and Windsor & Eton Riverside where trains run to London Paddington (via Slough) and London Waterloo. Nearby schools include Eton, The Kings House, Oakfield, The Queen Anne, St Edwards, Trevelyan, Trinity St Stephen, Upton House, Windsor Boys and Windsor Girls. Windsor is also convenient for the M4, M25 and Heathrow Airport.

EPC rating D. Council Tax band D.







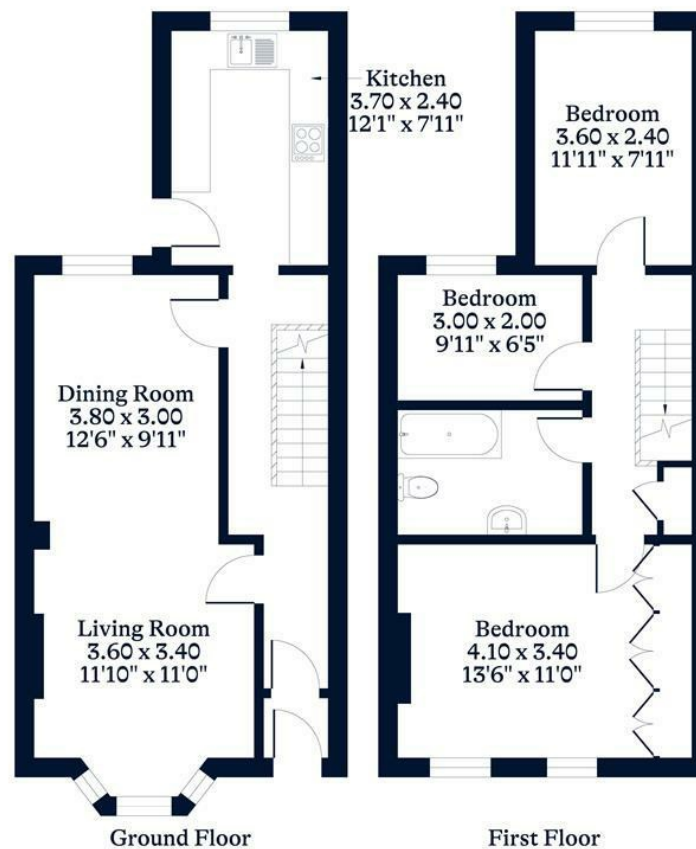
#### APPROXIMATE FLOOR AREA

House - 85.00 sq m - 915 sq ft  
(Gross Internal Area)



#### NOT TO SCALE

This plan is for illustration purposes only



This plan is for layout guidance only. Not drawn to scale unless stated. Windows and door openings are approximate. Whilst every care is taken in the preparation of this plan, please check all dimensions, shapes and compass bearings before making any decisions reliant upon them.

[OSBORNEHEATH.CO.UK](http://OSBORNEHEATH.CO.UK)