

 6  3  3



Longmead, *Windsor*

OSBORNE HEATH

A large six bedroom, three bathroom house with a driveway, garage, south facing garden and no onward chain.

On the ground floor there is a spacious living and dining room with patio doors out to the garden, separate kitchen with plenty of storage and a wine cooler, double bedroom or family room, downstairs WC and internal access to the garage.

On the first floor there are four bedrooms and a family bathroom. The principal bedroom has a living area with Juliet balcony overlooking the garden, en suite shower room and a dressing room. The loft has been converted into an en suite bedroom and bonus room.

To the front of the house is a driveway and garage with electric door and utility area. To the rear is a south facing garden.

Longmead is a residential road close to Dedworth Middle School. There is a range of shopping facilities nearby, plus additional facilities in Windsor town centre. Windsor has a wide range of shops and restaurants as well as the Castle, Great Park, Racecourse and Legoland. Nearby train stations include Windsor & Eton Central and Windsor & Eton Riverside, where trains run to London Paddington (via Slough) and London Waterloo, and there is bus stop close by including the GoToGate bus service to Heathrow Terminal 5. There are also various parks nearby including Sutherland Grange. Windsor is also convenient for the M4, M25 and Heathrow Airport.
Tenancy Length 12-36 Months. Deposit £3,115. Holding Deposit £623.00





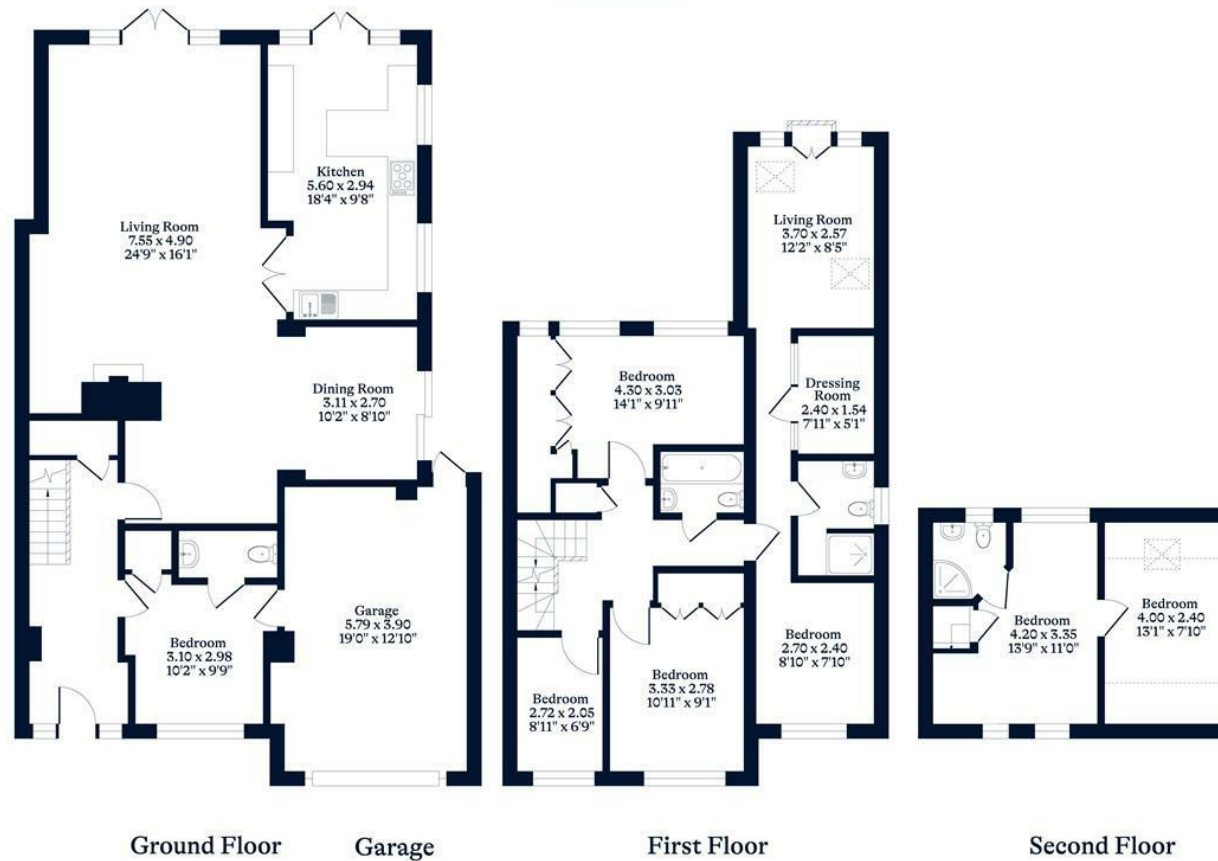
APPROXIMATE FLOOR AREA

House - 189.02 sq m - 2035 sq ft
Garage - 21.85 sq m - 235 sq ft
Total - 210.87 sq m - 2270 sq ft
(Gross Internal Area)



NOT TO SCALE

This plan is for illustration purposes only



This plan is for layout guidance only. Not drawn to scale unless stated. Windows and door openings are approximate. Whilst every care is taken in the preparation of this plan, please check all dimensions, shapes and compass bearings before making any decisions reliant upon them.

OSBORNEHEATH.CO.UK