

 3  2  2



# London Road, *Sunningdale*

OSBORNE HEATH



# An extended three bedroom semi-detached house with a gated driveway, south facing garden and no onward chain.

Downstairs there is a living room, dining room, kitchen with central island and downstairs shower room with WC.

The first floor has three bedrooms, a family bathroom and a WC off one of the bedrooms.

To the front of the house is gated driveway parking and to the rear is a south facing garden.

Nearby schools include Charters, Lambrook, The Marist, Papplewick, St Francis, St George's and St Mary's. Local places of interest include Ascot Racecourse, Coworth Park, Guards Polo Club, Sunningdale Golf Club, Virginia Water Lake, Wentworth Club and Windsor Great Park. The station in Sunningdale runs trains to London and Reading. Sunningdale is also convenient for the M3, M4, M25 and Heathrow Airport.

EPC rating D. Council Tax band D.





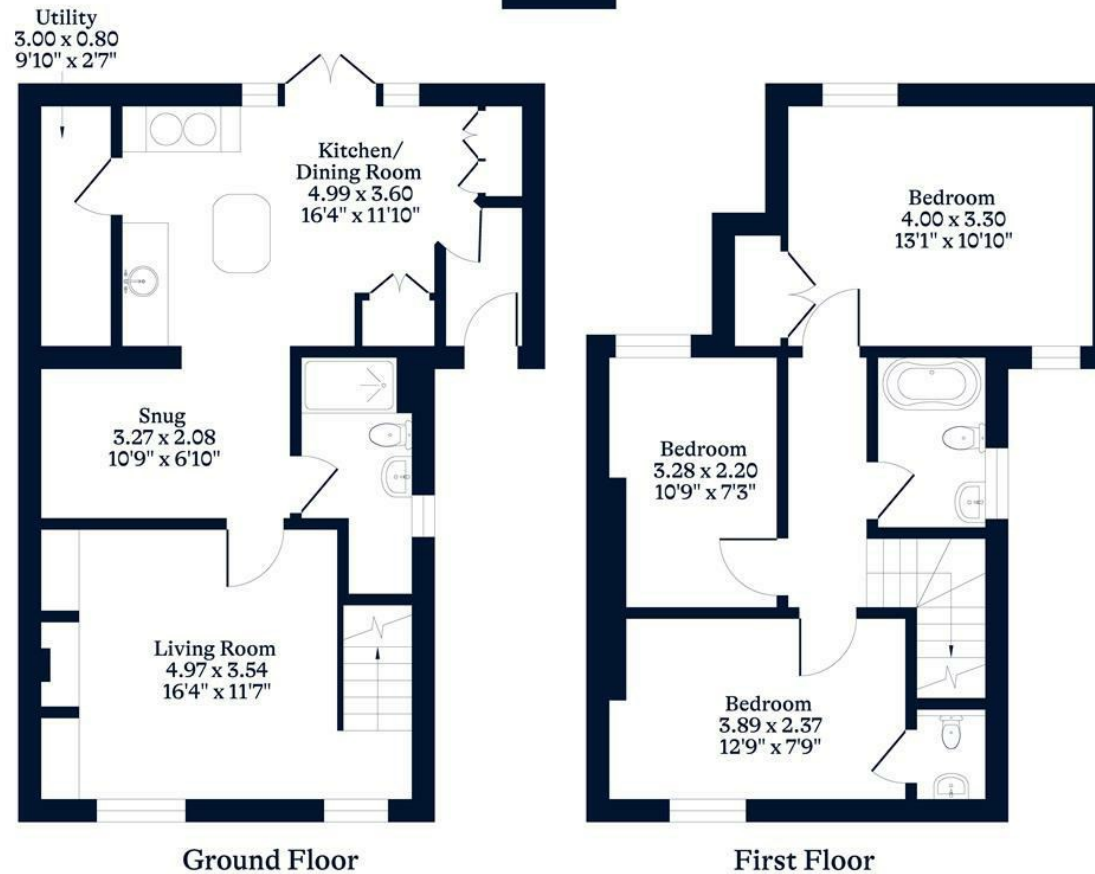




**APPROXIMATE FLOOR AREA**  
House - 91.64 sq m - 986 sq ft  
(Gross Internal Area)



**NOT TO SCALE**  
This plan is for illustration purposes only



This plan is for layout guidance only. Not drawn to scale unless stated. Windows and door openings are approximate. Whilst every care is taken in the preparation of this plan, please check all dimensions, shapes and compass bearings before making any decisions reliant upon them.

[OSBORNEHEATH.CO.UK](http://OSBORNEHEATH.CO.UK)