

 2  1  2



Snows Ride, *Windlesham*

OSBORNE HEATH

A two double bedroom, two bathroom apartment with a balcony, communal grounds and gated underground parking.

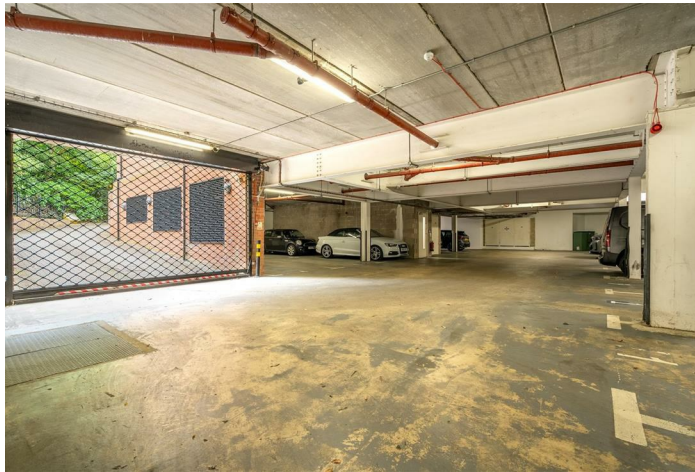
This modern first floor apartment has an open-plan living room and kitchen with a breakfast bar and double doors leading to the balcony, principal bedroom with fitted wardrobes and an en suite shower room, second double bedroom with fitted wardrobes, and a bathroom.

This apartment has underground parking with a bike store and lift, further visitors parking and access to communal gardens.

Chasemount is on Snows Ride in Windlesham village. The local area has the finest private and state schools including Gordon's, Hall Grove, Hurst Lodge, The Marist, St. George's, St. Mary's, Sunningdale, Valley End, Windlesham Village and Woodcote House. Local places of interest include Ascot Racecourse, Coworth Park, Guards Polo Club, The Lexicon, Queenswood, Sunningdale Golf Club, The Berkshire, Wentworth Club, Windsor Great Park and Windsor Castle. The nearest train stations are Bagshot and Sunningdale where trains run to London Waterloo, Guildford and Reading. Windlesham is also convenient for the M3, M4, M25 and Heathrow Airport.

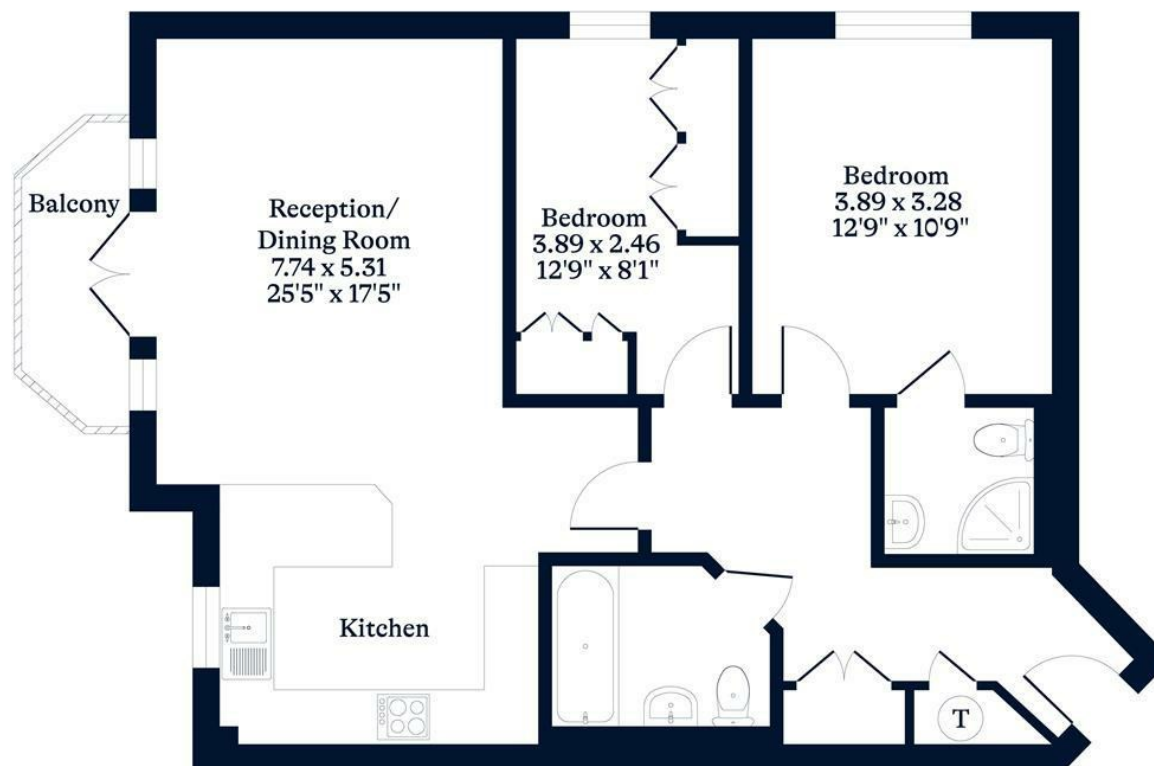
EPC rating C. Council Tax band E. Tenancy Length, 12-36 Months. Deposit £2,538. Holding Deposit: £507





APPROXIMATE FLOOR AREA
Apartment - 74.30 sq m - 800 sq ft
(Gross Internal Area)

NOT TO SCALE
This plan is for illustration purposes only



First Floor

This plan is for layout guidance only. Not drawn to scale unless stated. Windows and door openings are approximate. Whilst every care is taken in the preparation of this plan, please check all dimensions, shapes and compass bearings before making any decisions reliant upon them.

OSBORNEHEATH.CO.UK