

 2  1  1



Stroude Road, *Virginia Water*

OSBORNE HEATH

A modern two double bedroom character home with no onward chain.

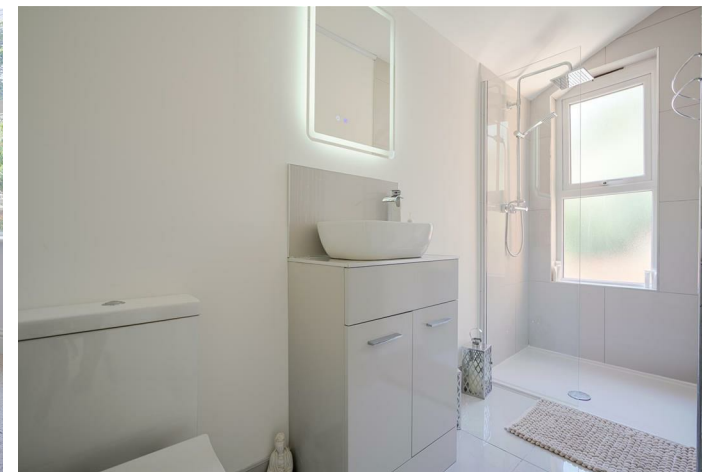
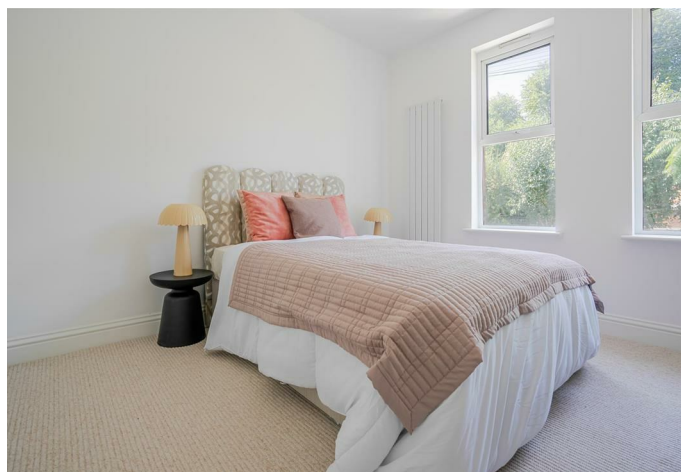
On the ground floor is a lounge, modern kitchen with dining space and a downstairs WC.

The first floor has two double bedrooms and a family bathroom.

Outside the property has garden and parking.

Stroude Road is in-between Virginia Water and Egham. The nearest station is Virginia Water where services run to London, Reading and Weybridge. Nearby schools include ACS, The Magna Carta, Manorcroft, Royal Holloway, St Ann's, Salesian, St Cuthbert's and Thorpe. Local places of interest include Ascot Racecourse, Guards Polo Club, Wentworth Club, Windsor Castle and Windsor Great Park. By road Virginia Water is convenient for the M3, M4, M25 and Heathrow Airport.

EPC rating C. Council Tax band C.





APPROXIMATE FLOOR AREA

House - 82.11 sq m - 884 sq ft
(Gross Internal Area)

O
/
H

NOT TO SCALE

This plan is for illustration purposes only



This plan is for layout guidance only. Not drawn to scale unless stated. Windows and door openings are approximate. Whilst every care is taken in the preparation of this plan, please check all dimensions, shapes and compass bearings before making any decisions reliant upon them.

OSBORNEHEATH.CO.UK