

🛏️ 2 🛋️ 2 🛁 2



Charles Street, *Windsor*

OSBORNE HEATH

**A modern two double bedroom,
two bathroom freehold
apartment in Windsor town
centre with allocated parking
and no onward chain.**

This first floor apartment has an open-plan kitchen and living room, principal bedroom and an en suite, second double bedroom, bathroom, and a loft space that could be used as a study or living room.

Outside there is one allocated parking space.

Crown Jules House is situated on Charles Street in Windsor town centre. Windsor has a wide range of shops and restaurants as well as the Castle, Great Park, Racecourse and Legoland. Nearby train stations include Windsor & Eton Central and Windsor & Eton Riverside where trains run to London Paddington (via Slough) and London Waterloo. Windsor is also convenient for the M4, M25 and Heathrow Airport.

EPC rating C. Council Tax band C. Freehold. Service Charge TBC.

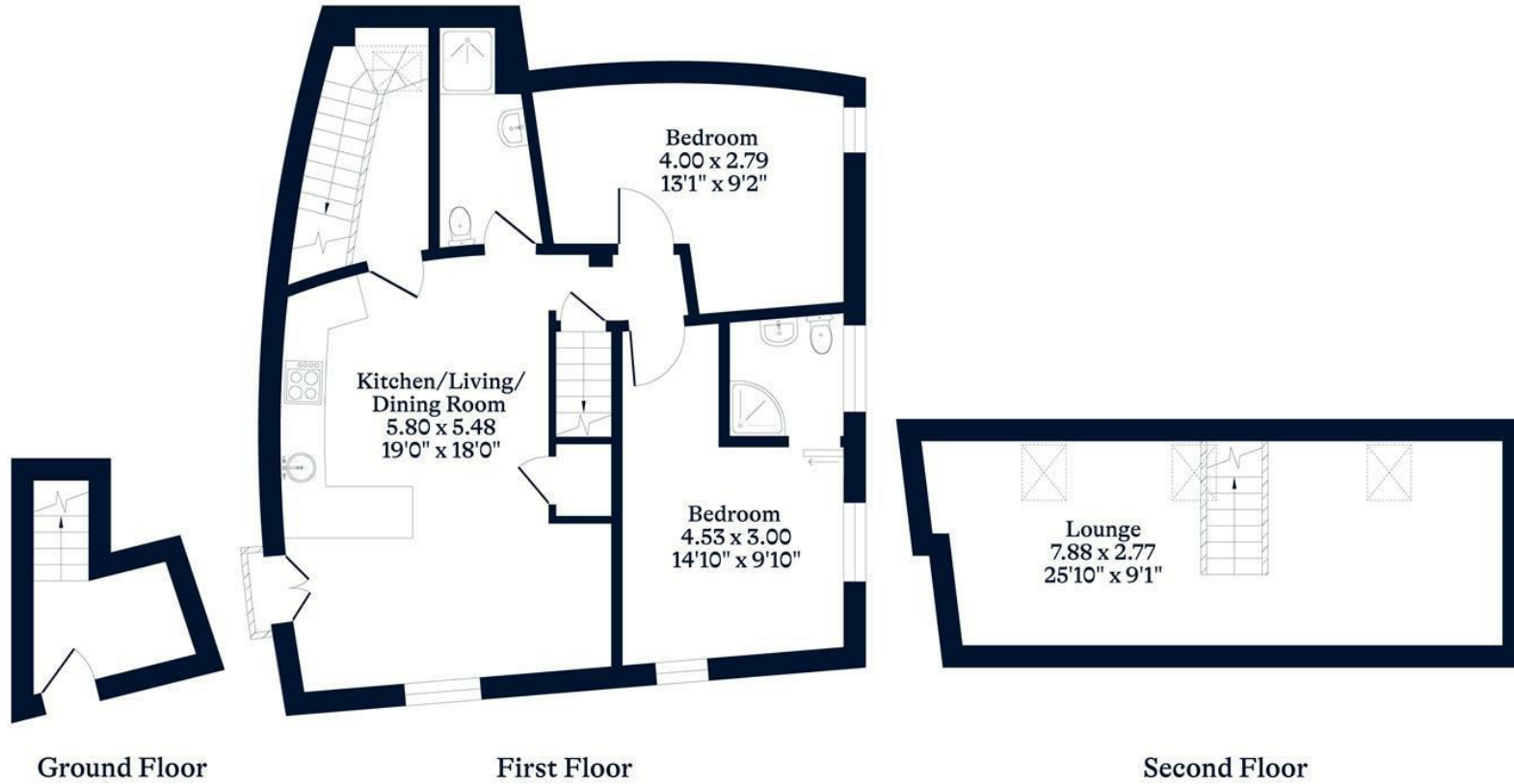




APPROXIMATE FLOOR AREA
Apartment - 85.88 sq m - 924 sq ft
(Gross Internal Area)



NOT TO SCALE
This plan is for illustration purposes only



This plan is for layout guidance only. Not drawn to scale unless stated. Windows and door openings are approximate. Whilst every care is taken in the preparation of this plan, please check all dimensions, shapes and compass bearings before making any decisions reliant upon them.

OSBORNEHEATH.CO.UK