

 1  1  1



# Victoria Road, *Ascot*

OSBORNE HEATH

## A one bedroom first floor apartment close to Ascot train station and high street.

This first floor maisonette has its own front door, a living room, modern kitchen, double bedroom and a modern bathroom.

Victoria Road is in South Ascot Village around 0.3 miles from Ascot train station where services run to London, Reading and Guildford. Nearby places of interest include Ascot Racecourse, Coworth Park, The Lexicon, Wentworth Club, Windsor Castle and Windsor Great Park. By road Ascot is convenient for the M3, M4, M25 and Heathrow Airport.

EPC rating E. Council Tax band B. Leasehold with 104 years remaining. Ground Rent £0. Service Charge £0.

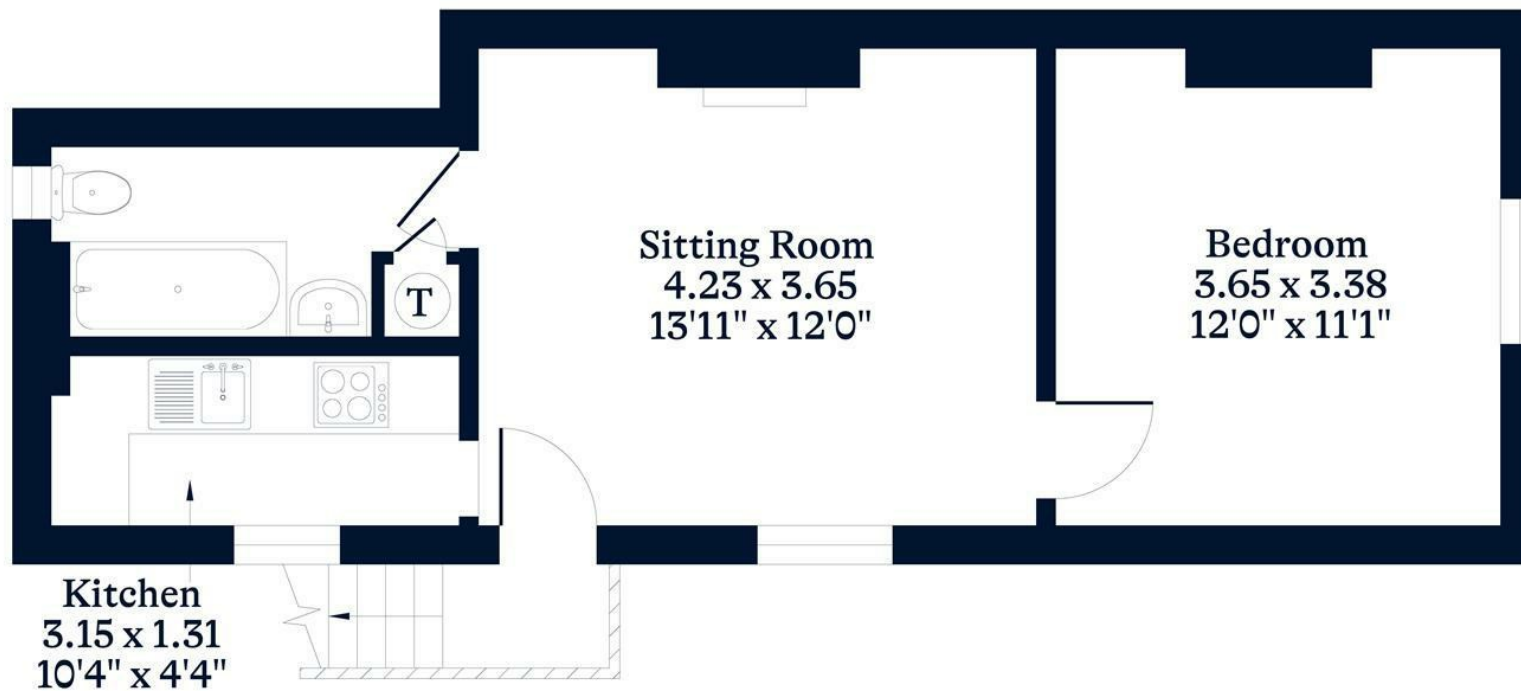




**APPROXIMATE FLOOR AREA**  
House - 38.20 sq m - 411 sq ft  
(Gross Internal Area)



**NOT TO SCALE**  
This plan is for illustration purposes only



**First Floor**

This plan is for layout guidance only. Not drawn to scale unless stated. Windows and door openings are approximate. Whilst every care is taken in the preparation of this plan, please check all dimensions, shapes and compass bearings before making any decisions reliant upon them.

**OSBORNEHEATH.CO.UK**