

 4  3  3



Slough Road, *Datchet*

OSBORNE HEATH

An extended and refurbished four bedroom, three bathroom detached home with an in and out driveway.

The ground floor has been extended and refurbished with a modern kitchen that has Bosch appliances, utility room, downstairs bedroom that has patio doors out to the garden and an en suite shower room. There is also a formal living room, dining area with a door leading out to the garden, study and downstairs WC.

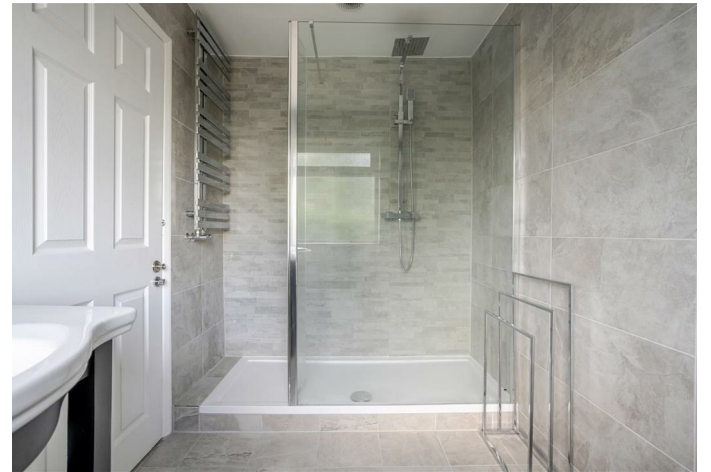
Upstairs there are three bedrooms, an en suite bathroom to the principal bedroom, and a shower room.

To the front of the property there is an in and out driveway with parking for multiple vehicles. The rear garden has a patio area and a landscaped lawn.

Slough Road is close to the centre of Datchet village, with local shops and a train station where services run to London and Windsor & Eton Riverside. Nearby schools include Churchmead, Eton End and St Mary's. Local places of interest include Ascot Racecourse, Legoland, The Lexicon, River Thames, Windsor Castle, Windsor Great Park and Windsor Racecourse. By road Datchet is convenient for Heathrow Airport, M4 and M25.

EPC rating D. Council Tax band G.

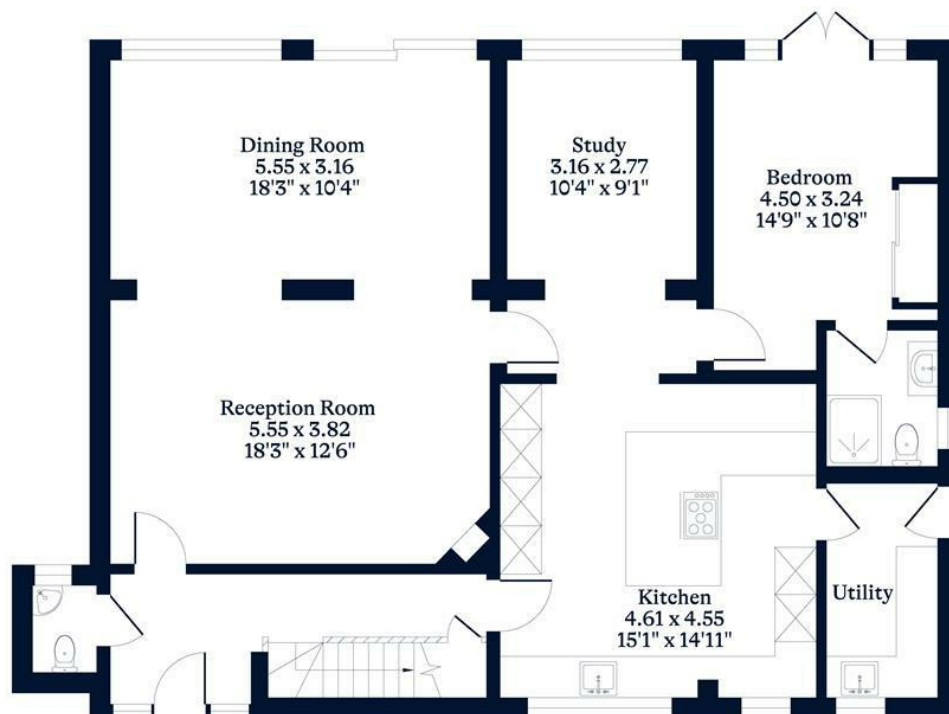




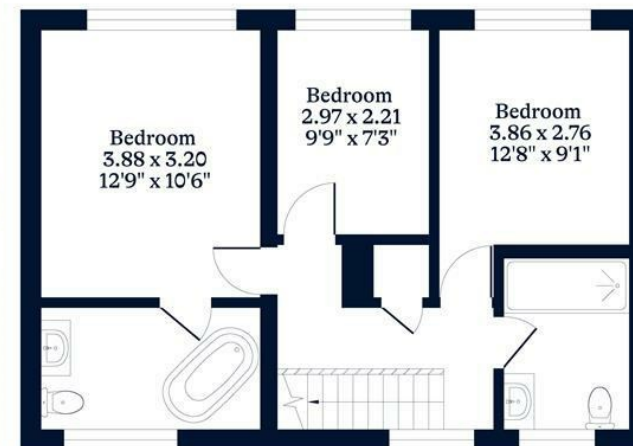
APPROXIMATE FLOOR AREA
House - 163.40 sq m - 1759 sq ft
(Gross Internal Area)



NOT TO SCALE
This plan is for illustration purposes only



Ground Floor



First Floor

This plan is for layout guidance only. Not drawn to scale unless stated. Windows and door openings are approximate. Whilst every care is taken in the preparation of this plan, please check all dimensions, shapes and compass bearings before making any decisions reliant upon them.

OSBORNEHEATH.CO.UK