

 2  1  2



London Road, *Ascot*

OSBORNE HEATH

A beautifully presented two bedroom, two bathroom apartment ideally positioned for Ascot high street.

A newly renovated two bedroom apartment finished to a high standard throughout.

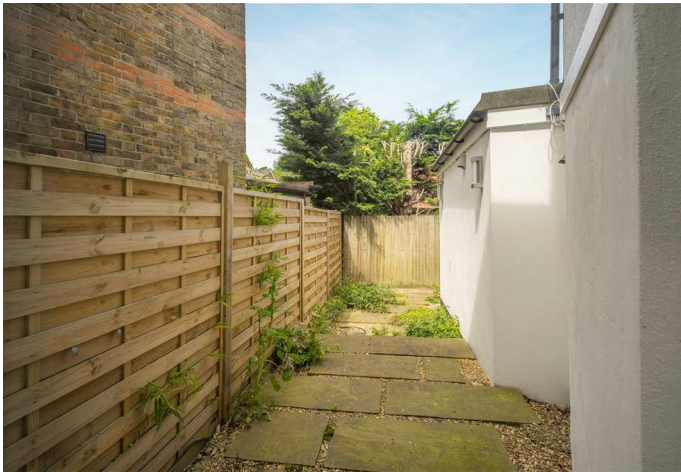
The property has its own private entrance with a modern kitchen, two bedrooms and two bathrooms.

Outside there is a private patio garden.

London Road is situated at the foot of Ascot high street. Nearby places of interest include Ascot Racecourse, The Berkshire Golf Club, Coworth Park, Guards Polo Club, Legoland, The Lexicon, Sunningdale Golf Club, Swinley Forest, Wentworth Club and Windsor Great Park. Ascot train station runs services to London, Reading and Guildford and by road Ascot is convenient for the M3, M4, M25 and Heathrow Airport.

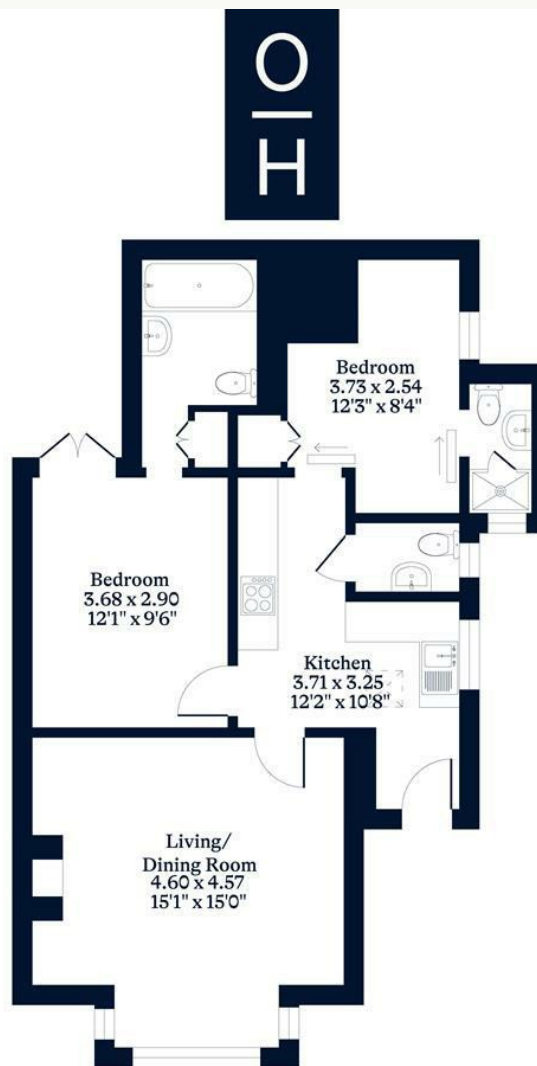
EPC rating C. Council Tax band C. Tenancy Length 3-6 Months
Deposit £2,221. Holding Deposit £444.00





APPROXIMATE FLOOR AREA
Apartment - 62.70 sq m - 675 sq ft
(Gross Internal Area)

NOT TO SCALE
This plan is for illustration purposes only



Ground Floor

This plan is for layout guidance only. Not drawn to scale unless stated. Windows and door openings are approximate. Whilst every care is taken in the preparation of this plan, please check all dimensions, shapes and compass bearings before making any decisions reliant upon them.

OSBORNEHEATH.CO.UK