

 5  2  3



Frances Road, *Windsor*

OSBORNE HEATH

A five bedroom, three bathroom Victorian house in Windsor's Golden Triangle, available immediately for short let.

The ground floor has a spacious double reception room with high ceilings, kitchen with feature island and large sliding aluminium doors out to the garden, utility room and a downstairs WC.

On the first floor there are three double bedrooms with built-in wardrobes, including the principal bedroom with an en suite shower room, and a family bathroom. The top floor has two further bedrooms and a shower room.

Outside there is a pretty walled garden with patio and an outbuilding.

Frances Road is in the popular Golden Triangle area of Windsor town centre. Windsor has a wide range of shops and restaurants as well as the Castle, Great Park, Racecourse and Legoland. Nearby train stations include Windsor & Eton Central and Windsor & Eton Riverside where trains run to London Paddington (via Slough) and London Waterloo. Windsor is also convenient for the M4, M25 and Heathrow Airport.

EPC rating E. Council Tax band G. Tenancy Length 2-6 Months - Deposit £7,500. Holding Deposit - £1,500.





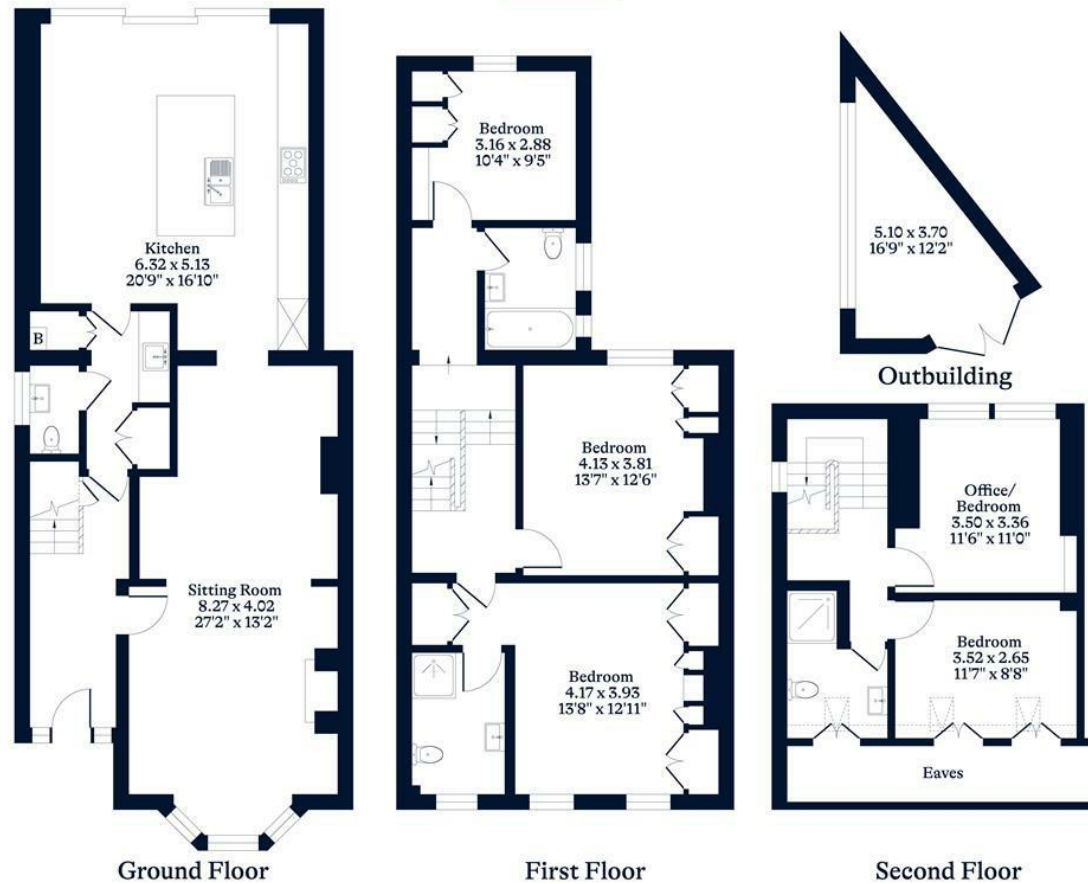
APPROXIMATE FLOOR AREA

House - 186.01 sq m - 2002 sq ft
Outbuilding - 8.79 sq m - 95 sq ft
Total - 194.80 sq m - 2097 sq ft
(Gross Internal Area)



NOT TO SCALE

This plan is for illustration purposes only



This plan is for layout guidance only. Not drawn to scale unless stated. Windows and door openings are approximate. Whilst every care is taken in the preparation of this plan, please check all dimensions, shapes and compass bearings before making any decisions reliant upon them.

OSBORNEHEATH.CO.UK