

 3  2  1



Portnall Cottages, *Sunningdale*

OSBORNE HEATH

An extended and refurbished three bedroom semi-detached house with driveway parking and a large south facing garden.

Downstairs there is a living room with wood-burner, kitchen with central island, family room leading out to the garden and a downstairs WC.

The first floor has two bedrooms and a new bathroom, and the loft has been converted into a third bedroom.

To the front of the house is driveway parking and to the rear is a long south facing garden.

Nearby schools include Charters, Lambrook, The Marist, Papplewick, St Francis, St George's and St Mary's. Local places of interest include Ascot Racecourse, Coworth Park, Guards Polo Club, Sunningdale Golf Club, Virginia Water Lake, Wentworth Club and Windsor Great Park. The station in Sunningdale runs trains to London Waterloo and Reading. Sunningdale is also convenient for the M3, M4, M25 and Heathrow Airport.

EPC rating E. Council Tax band E.

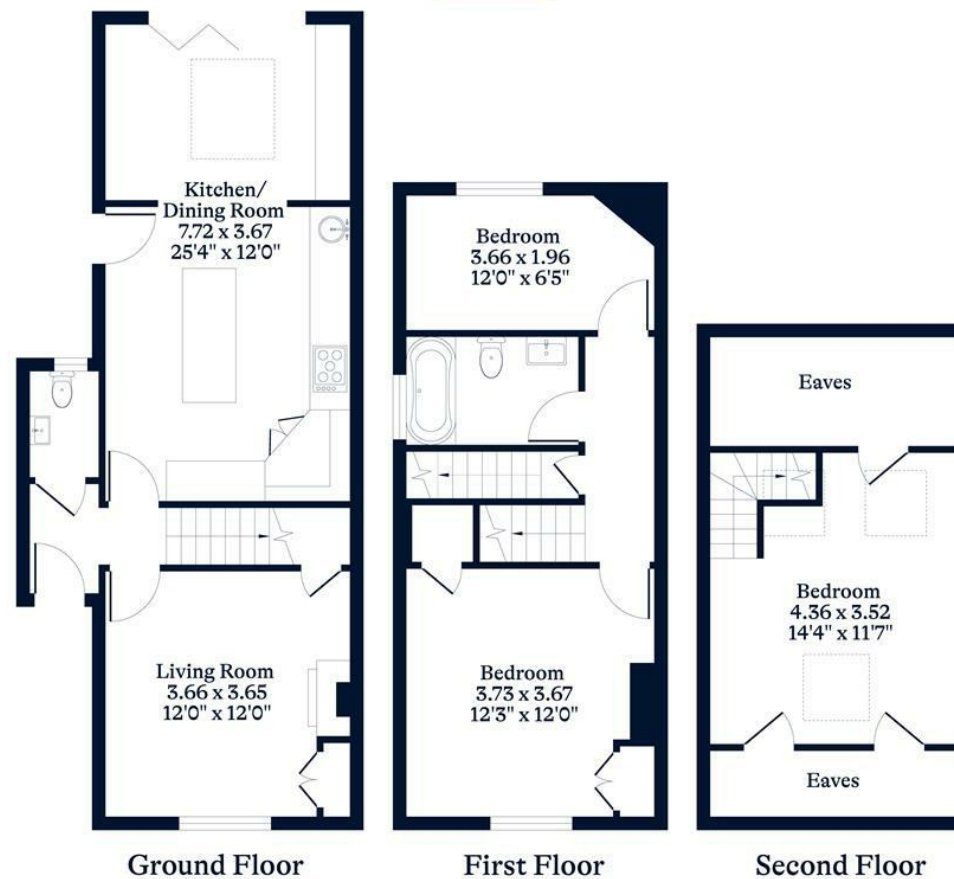




APPROXIMATE FLOOR AREA
House - 97.64 sq m - 1051 sq ft
(Gross Internal Area)



NOT TO SCALE
This plan is for illustration purposes only



This plan is for layout guidance only. Not drawn to scale unless stated. Windows and door openings are approximate. Whilst every care is taken in the preparation of this plan, please check all dimensions, shapes and compass bearings before making any decisions reliant upon them.

OSBORNEHEATH.CO.UK