

 2  1  1



High Street, *Sunningdale*

OSBORNE HEATH

Available immediately - A spacious two double bedroom apartment with a private garden and off-street parking.

This first floor apartment has been redecorated throughout and consists of a living room, separate kitchen, two large double bedrooms and a bathroom.

Outside there is a private patio garden.

High Street is in the village of Sunningdale. Nearby schools include Charters, Holy Trinity, The Marist and St Francis. Local places of interest include Ascot Racecourse, Coworth Park, Guards Polo Club, Legoland, The Lexicon, Sunningdale Golf Club, Virginia Water Lake, Wentworth Club and Windsor Great Park. The station in Sunningdale runs trains to London and Reading. Sunningdale is also convenient for the M3, M4, M25 and Heathrow Airport.

Tenancy Length 12-36 Months. Council Tax band C. EPC rating E. Deposit £1,903. Holding Deposit £380.

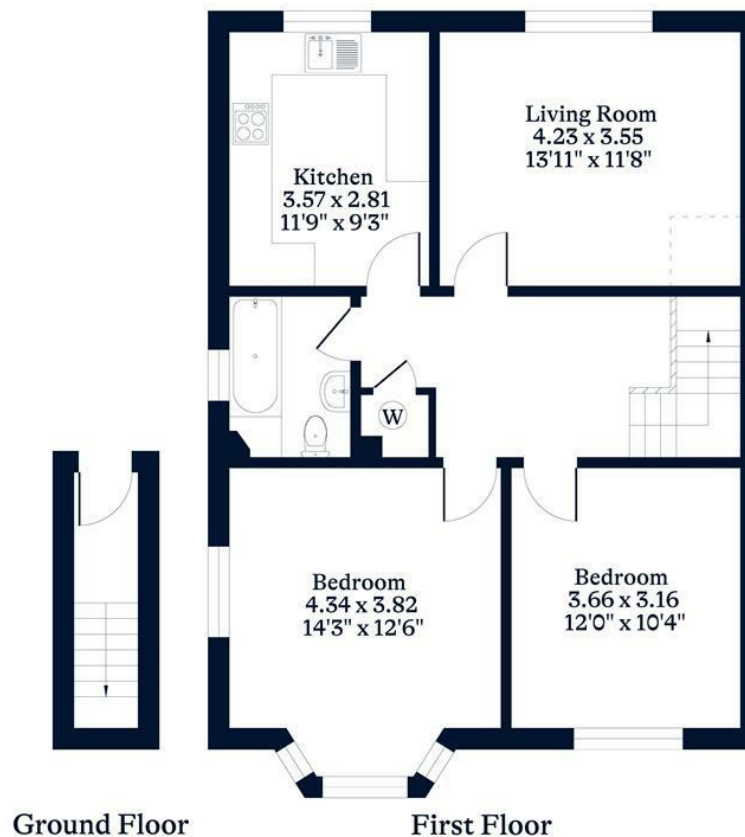




APPROXIMATE FLOOR AREA
Maisonette - 74.85 sq m - 806 sq ft
(Gross Internal Area)



NOT TO SCALE
This plan is for illustration purposes only



This plan is for layout guidance only. Not drawn to scale unless stated. Windows and door openings are approximate. Whilst every care is taken in the preparation of this plan, please check all dimensions, shapes and compass bearings before making any decisions reliant upon them.

OSBORNEHEATH.CO.UK