

 2  1  1



Dedworth Manor, *Windsor*

OSBORNE HEATH

A two double bedroom ground floor maisonette in a converted manor house in cul-de-sac, with residents parking and communal gardens with no onward chain.

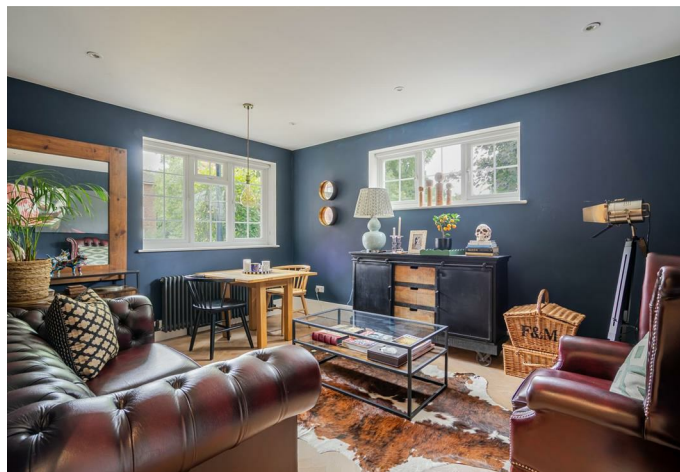
Dedworth Manor is a converted manor house in which this ground floor maisonette has its own entrance and has been recently refurbished.

There is a modernised kitchen and bathroom with underfloor heating, a large living and dining room and two double bedrooms.

Outside there is residents parking and a communal garden.

Dedworth Manor is at the end of a small cul-de-sac called Thames Mead, off Smiths Lane. Windsor town centre has a wide range of shops and restaurants as well as Windsor Castle, Windsor Great Park, Windsor Racecourse and Legoland. Train stations include Windsor & Eton Central and Windsor & Eton Riverside where trains run to London Paddington (via Slough - Elizabeth Line) and London Waterloo, plus there is bus stop close by including the GoToGate bus service to Heathrow Terminal 5.

EPC rating D. Council Tax band C. The lease is being renewed by current owners and will be sold with 167 year lease, £1 pa ground rent, and a service charge of £2,130 pa.



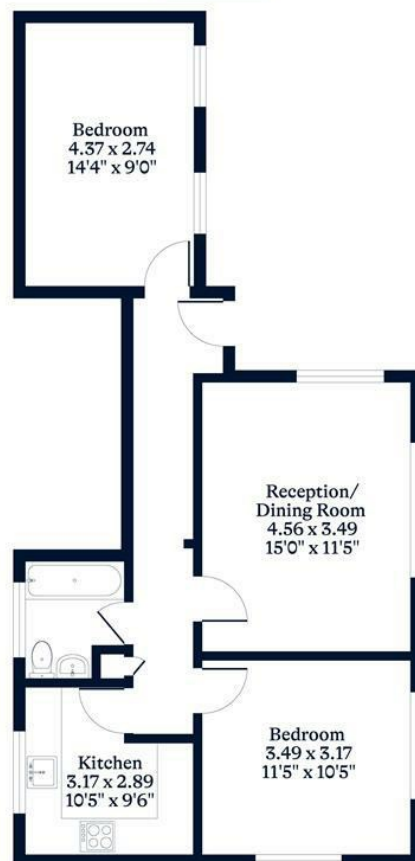


APPROXIMATE FLOOR AREA

House - 59.00 sq m - 637 sq ft
(Gross Internal Area)

NOT TO SCALE

This plan is for illustration purposes only



This plan is for layout guidance only. Not drawn to scale unless stated. Windows and door openings are approximate. Whilst every care is taken in the preparation of this plan, please check all dimensions, shapes and compass bearings before making any decisions reliant upon them.

OSBORNEHEATH.CO.UK