

 4  2  2



Gainsborough Drive, Ascot

OSBORNE HEATH



# A four bedroom, two bathroom detached family home with a large west facing garden, garage, driveway and no onward chain.

On the ground floor there is a living room, extended kitchen with a breakfast bar, spacious dining room with vaulted ceiling, downstairs bedroom or study, and a shower room.

The first floor there has three bedrooms with built-in wardrobes and a family bathroom.

To the front of the property there is a front garden and driveway, access to the garage and side access to the large west facing rear garden.

Gainsborough Drive is in the popular Blythwood development. Nearby schools include Ascot Heath, Charters, Cheapside, Heathfield, LVS, Papplewick and St. Francis. The nearest train station is Ascot where services run to London Waterloo, Reading and Guildford. By road Ascot is convenient for the M3, M4, M25 and Heathrow Airport. Nearby points of interest include Ascot Racecourse, Guards Polo Club, Legoland, The Lexicon, Sunningdale Golf Club, Wentworth Club and Windsor Great Park.

EPC rating C. Council Tax band F.







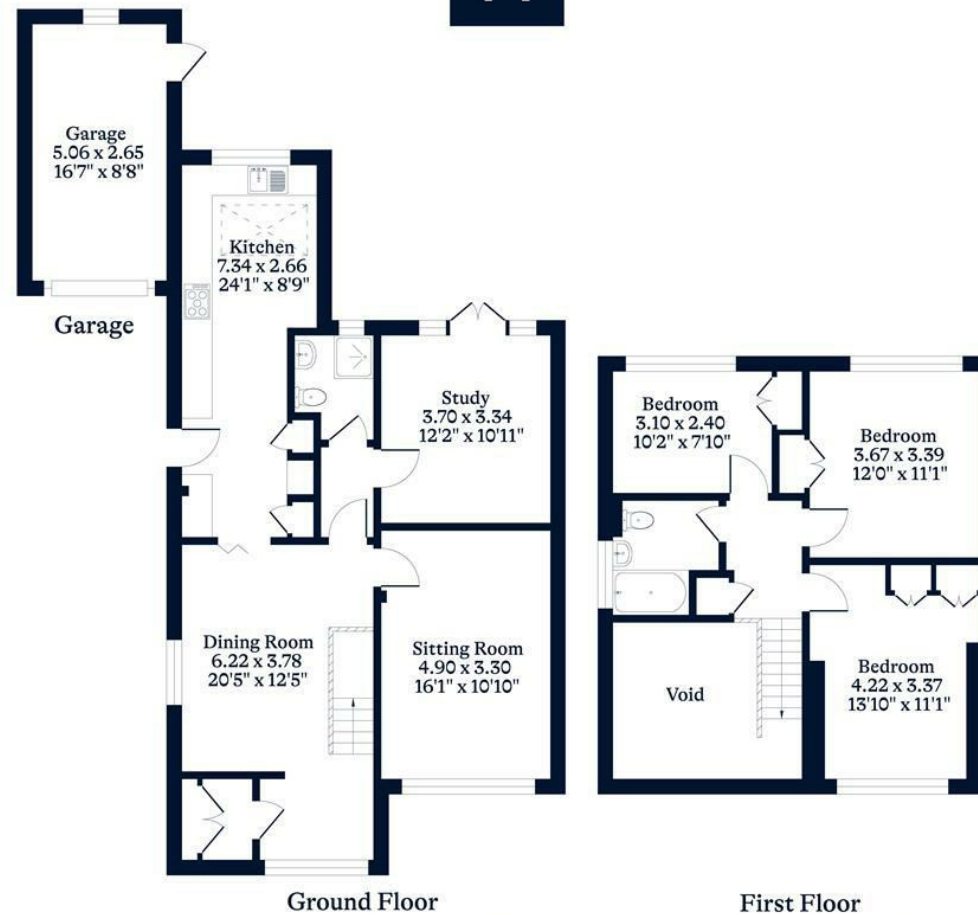
#### APPROXIMATE FLOOR AREA

House - 126.57 sq m - 1362 sq ft  
Garage - 13.40 sq m - 144 sq ft  
Total - 139.97 sq m - 1506 sq ft  
(Gross Internal Area)

O  
—  
H

#### NOT TO SCALE

This plan is for illustration purposes only



This plan is for layout guidance only. Not drawn to scale unless stated. Windows and door openings are approximate. Whilst every care is taken in the preparation of this plan, please check all dimensions, shapes and compass bearings before making any decisions reliant upon them.

OSBORNEHEATH.CO.UK