

3 2 3



Fifield Road, *Fifield*

OSBORNE HEATH

An extended three double bedroom, three bathroom house in a semi-rural location with driveway parking and a useful garden room.

This beautifully presented cottage has been extended and remodelled by the current owner into a stylish family home.

The ground floor has a living room, dining room with roof lantern and bi-folding doors, kitchen, utility room, study and a downstairs WC.

On the first floor there are two double bedrooms, both with en suite shower rooms, and on the second floor is the principal bedroom and a large period style bathroom.

Outside, the front garden has a painted picket fence, an area of lawn, gate to the rear garden and driveway parking for one car. The rear garden has paving, an area of lawn with shrub/flower beds and a useful garden room.

Memorial Cottage is situated in the popular village of Fifield, located in-between Windsor And Maidenhead. There is a range of shopping facilities close by including Tesco and Aldi, with additional facilities in Windsor town centre. Windsor has a wide range of shops and restaurants as well as the Castle, Great Park, Racecourse and Legoland. Nearby train stations include Windsor & Eton Central and Windsor & Eton Riverside where trains run to London Paddington (via Slough-Elizabeth Line) and London Waterloo. Local schools include Braywood, Homer, Dedworth, Hilltop, St Edwards, Trevelyan, Windsor Boys and Windsor Girls. Windsor is also convenient for the M4, M25 and Heathrow Airport. The very popular Fifield Inn pub/restaurant is within walking distance.

EPC rating D. Council Tax band D.

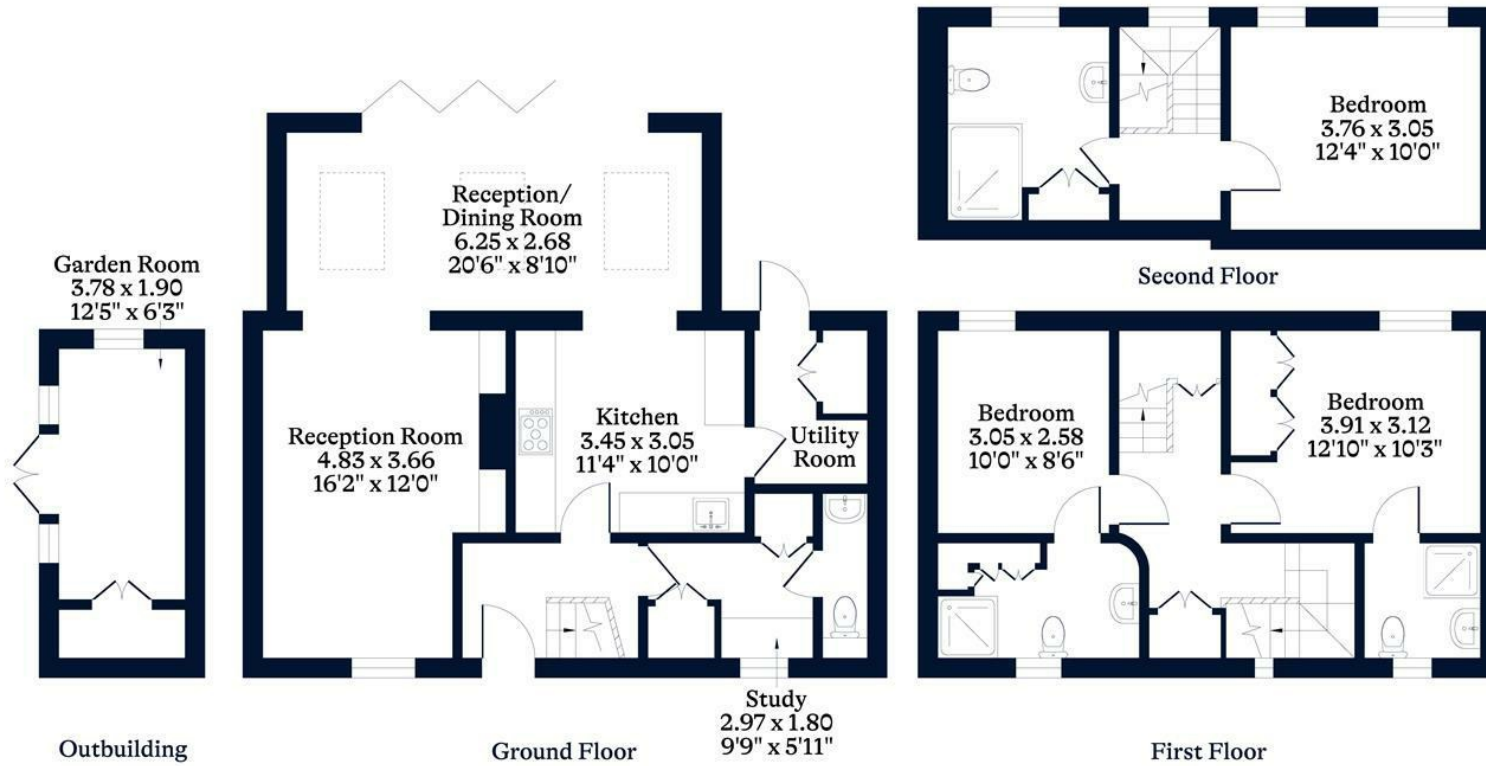




APPROXIMATE FLOOR AREA
House - 130.25 sq m - 1402 sq ft
Outbuilding - 9.01 sq m - 97 sq ft
Total - 139.26 sq m - 1499 sq ft
(Gross Internal Area)



NOT TO SCALE
This plan is for illustration purposes only



This plan is for layout guidance only. Not drawn to scale unless stated. Windows and door openings are approximate. Whilst every care is taken in the preparation of this plan, please check all dimensions, shapes and compass bearings before making any decisions reliant upon them.

OSBORNEHEATH.CO.UK