

4 2 2



Honeysuckle Close, *Windsor*

OSBORNE HEATH

****NEW SHOW HOME AVAILABLE****
An attractive four bedroom end-of-terrace house situated on the new Oakley Mews development. These EPC A-rated homes are extremely energy efficient, saving both energy and money.

This property has Karndean flooring and luxury carpet.

On the ground floor there is an open-plan kitchen/dining/family room with bi-fold doors, a utility room, WC and a separate snug.

The first floor has a double bedroom which is light and airy with French doors leading out onto a generous balcony, there are two further bedrooms and a family bathroom.

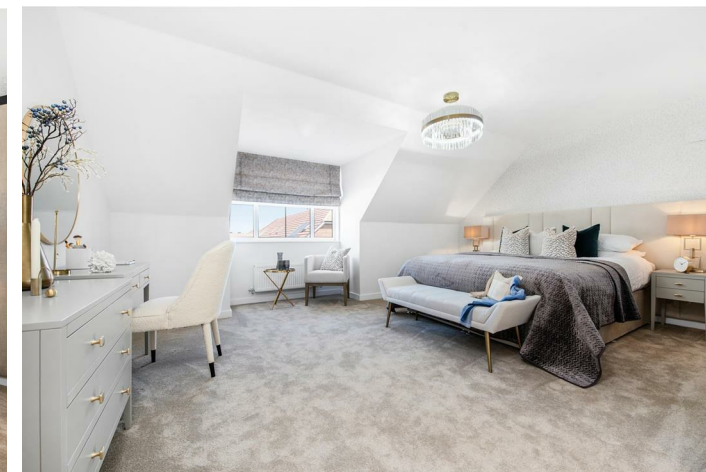
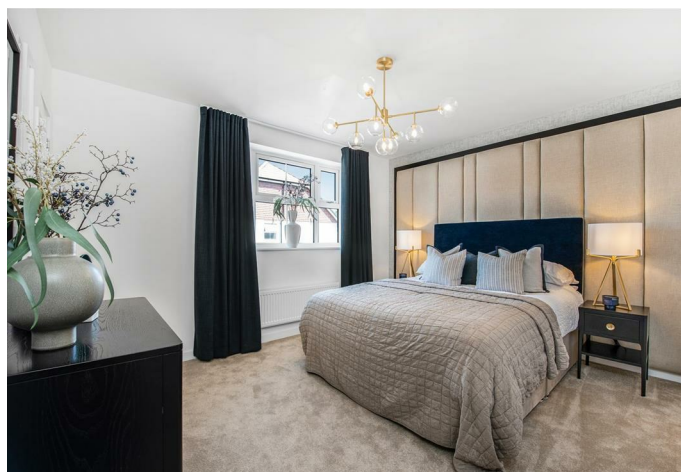
On the second floor is the principal bedroom with ensuite, dressing room and fitted wardrobes.

Outside, there is a west facing rear garden with a patio and lawn. There is driveway parking for two cars and an EV charging point.

The property is situated on the outskirts of Windsor, close to Windsor Marina and The River Thames. There is a range of local shopping facilities close by, with additional facilities in Windsor town centre, which is approximately 2.5 miles away. Windsor has a wide range of shops and restaurants as well as the Castle, Great Park, Racecourse and Legoland. Nearby train stations include Windsor & Eton Central and Windsor & Eton Riverside where trains run to London Paddington (via Slough) and London Waterloo and there is bus stop close by. The area is well served by a number of state, private and international schools and there are various parks close by including Sutherland Grange. Windsor is also convenient for the M4, M25 and Heathrow Airport.

All homes at Oakley Mews have an EPC rating of A meaning you could save up to £135 a month on average under Ofgem's new price cap**

Want to buy a Nicholas King Home but haven't sold your existing home? Easy Move is the perfect solution. Contact the sales team to find out more about Easy Move.

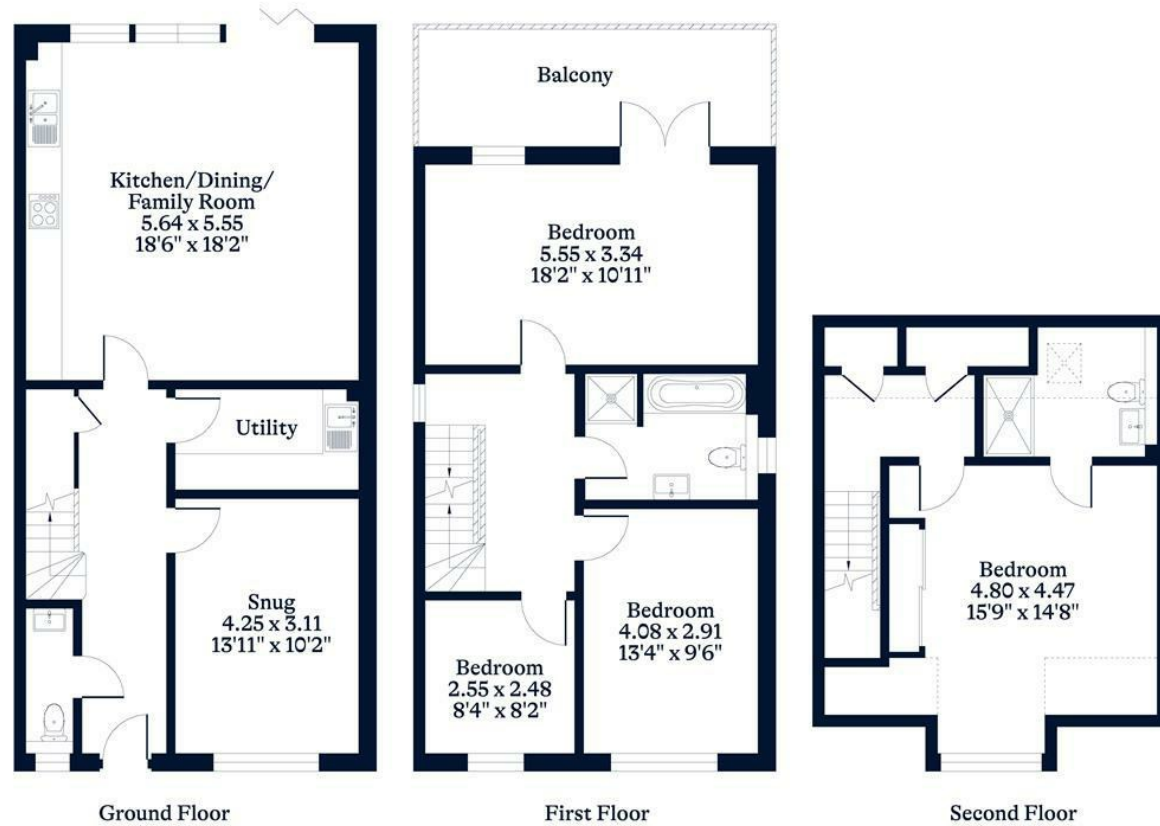




APPROXIMATE FLOOR AREA
House - 155.00 sq m - 1671 sq ft
(Gross Internal Area)



NOT TO SCALE
This plan is for illustration purposes only



This plan is for layout guidance only. Not drawn to scale unless stated. Windows and door openings are approximate. Whilst every care is taken in the preparation of this plan, please check all dimensions, shapes and compass bearings before making any decisions reliant upon them.

OSBORNEHEATH.CO.UK