

🛏️ 2 🛋️ 1 🛁 2



Convent Court, *Windsor*

OSBORNE HEATH

A two double bedroom, two bathroom duplex apartment on the popular Convent Court development with gated parking and no onward chain.

Convent Court is a development of apartments converted from St John the Baptist Convent, and offers a wealth of character features, not only within this particular apartment, but throughout the whole development.

The apartment comprises an entrance hall with twin fireplaces, open-plan living room and kitchen with fireplace, bedroom two and a shower room.

The upper floor is accessed via a spiral staircase leading to the principal bedroom with an en suite bathroom.

Convent Court is a gated development with extension communal grounds including a central courtyard, and residents car parking.

The development is situated on Hatch Lane, close to local shops including Tesco Express. Windsor has a wide range of shops and restaurants as well as Windsor Castle, Windsor Great Park, Windsor Racecourse and Legoland. Train stations include Windsor & Eton Central and Windsor & Eton Riverside where trains run to London Paddington (via Slough - Elizabeth Line) and London Waterloo. The area has a selection of well-regarded schools close by including St Edwards, Clewer Green, Windsor Boys and Windsor Girls.

EPC rating C. Council Tax band D. Lease Remaining 106 Years. Service Charge £3,600pa. Ground Rent 250 pa.

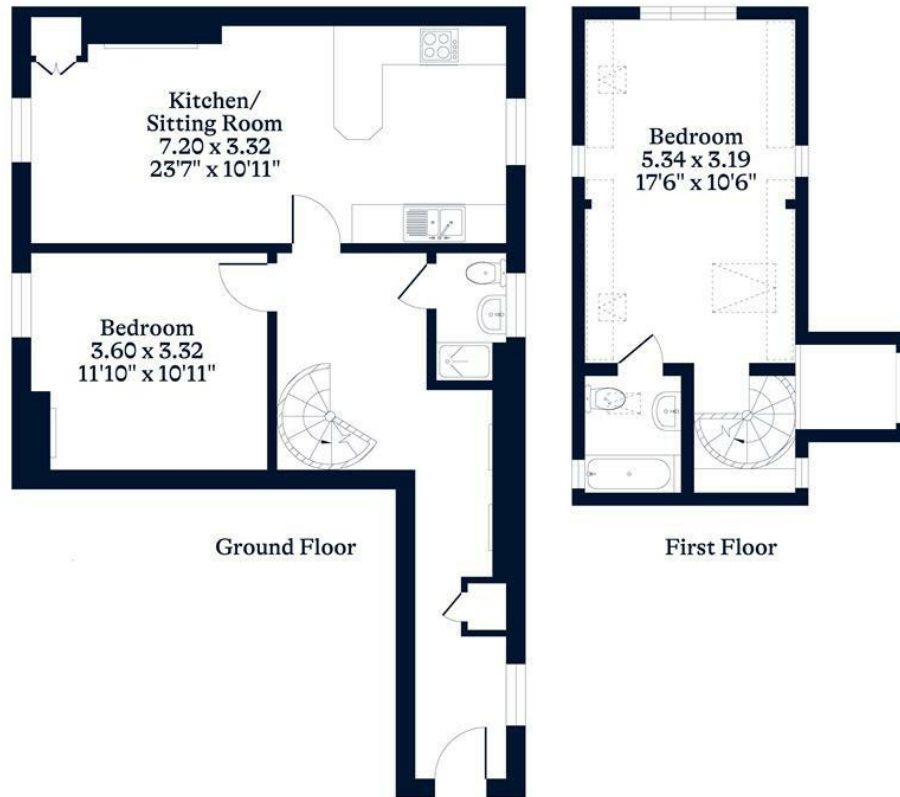




APPROXIMATE FLOOR AREA
81.00 sq m - 872 sq ft
(Gross Internal Area)



NOT TO SCALE
This plan is for illustration purposes only



This plan is for layout guidance only. Not drawn to scale unless stated. Windows and door openings are approximate. Whilst every care is taken in the preparation of this plan, please check all dimensions, shapes and compass bearings before making any decisions reliant upon them.

OSBORNEHEATH.CO.UK