

3 2 2



# Russell Street, *Windsor*

OSBORNE HEATH



# A three bedroom, two bathroom end of terrace house with a south facing courtyard in the heart of Windsor town centre.

The ground floor there is a living room with custom-built media units, kitchen/breakfast room featuring an electric AGA cooker, central island, and a utility that leads to the south facing garden.

On the first floor is the principal bedroom with an en suite shower room, a double bedroom with built-in storage, a third bedroom or dressing room, and a family bathroom.

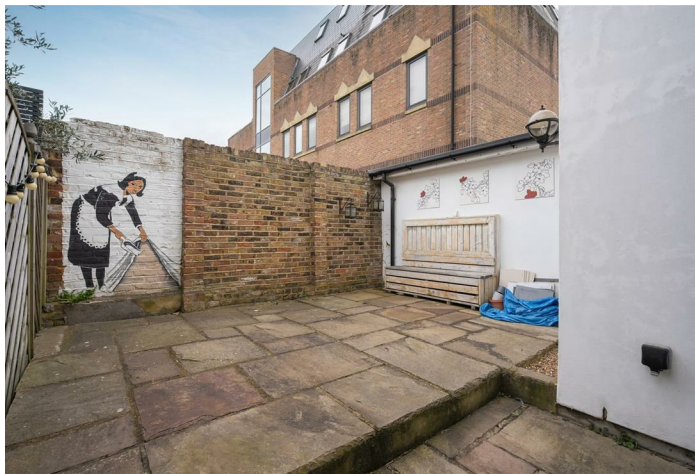
Outside there is a south facing courtyard that features a painted mural.

Russell Street is situated in the heart of Windsor town centre, just off St Leonards Road. Windsor has a wide range of shops and restaurants as well as the Castle, Great Park, Racecourse and Legoland. Nearby train stations include Windsor & Eton Central and Windsor & Eton Riverside where trains run to London Paddington (via Slough - Elizabeth Line) and London Waterloo. Nearby schools include Eton, The Kings House, Oakfield, The Queen Anne, St Edwards, Trevelyan, Trinity St Stephen, Upton House, Windsor Boys and Windsor Girls. Windsor is also convenient for the M4, M25 and Heathrow Airport.

EPC D. Council Tax Band D. Deposit £2,884. Holding Deposit £576. Lease Length 12-36 months.



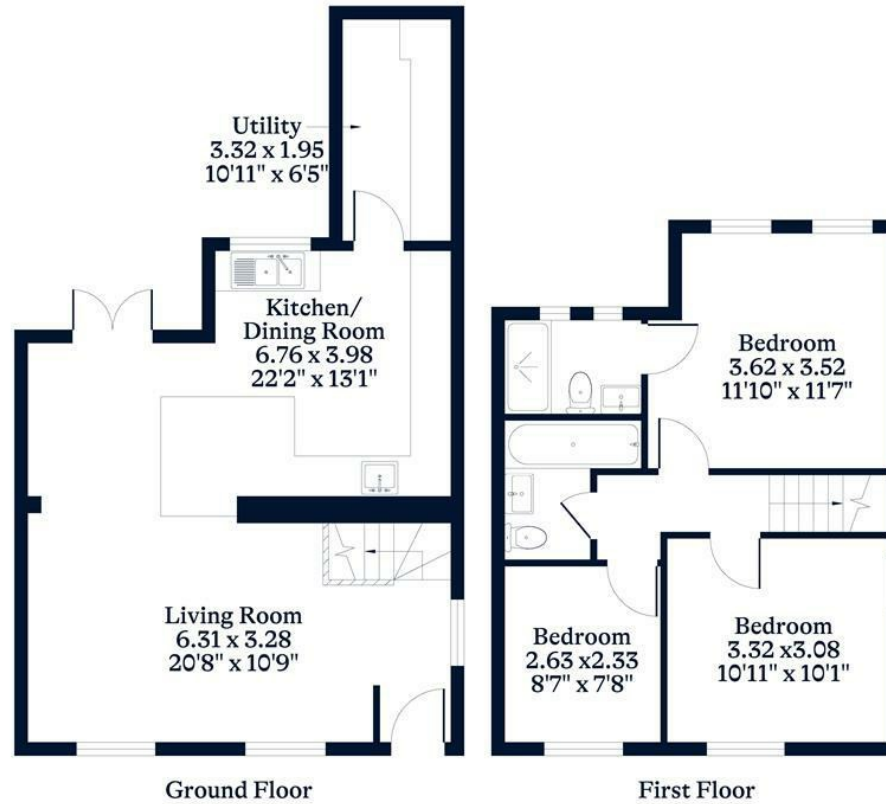




**APPROXIMATE FLOOR AREA**  
House - 89.30 sq m - 961 sq ft  
(Gross Internal Area)



**NOT TO SCALE**  
This plan is for illustration purposes only



This plan is for layout guidance only. Not drawn to scale unless stated. Windows and door openings are approximate. Whilst every care is taken in the preparation of this plan, please check all dimensions, shapes and compass bearings before making any decisions reliant upon them.

[OSBORNEHEATH.CO.UK](http://OSBORNEHEATH.CO.UK)