

6 5 4



Oaklands Drive, *Ascot*

OSBORNE HEATH

A six bedroom, four bathroom detached family home in a cul-de-sac, with a driveway, south facing garden and no onward chain.

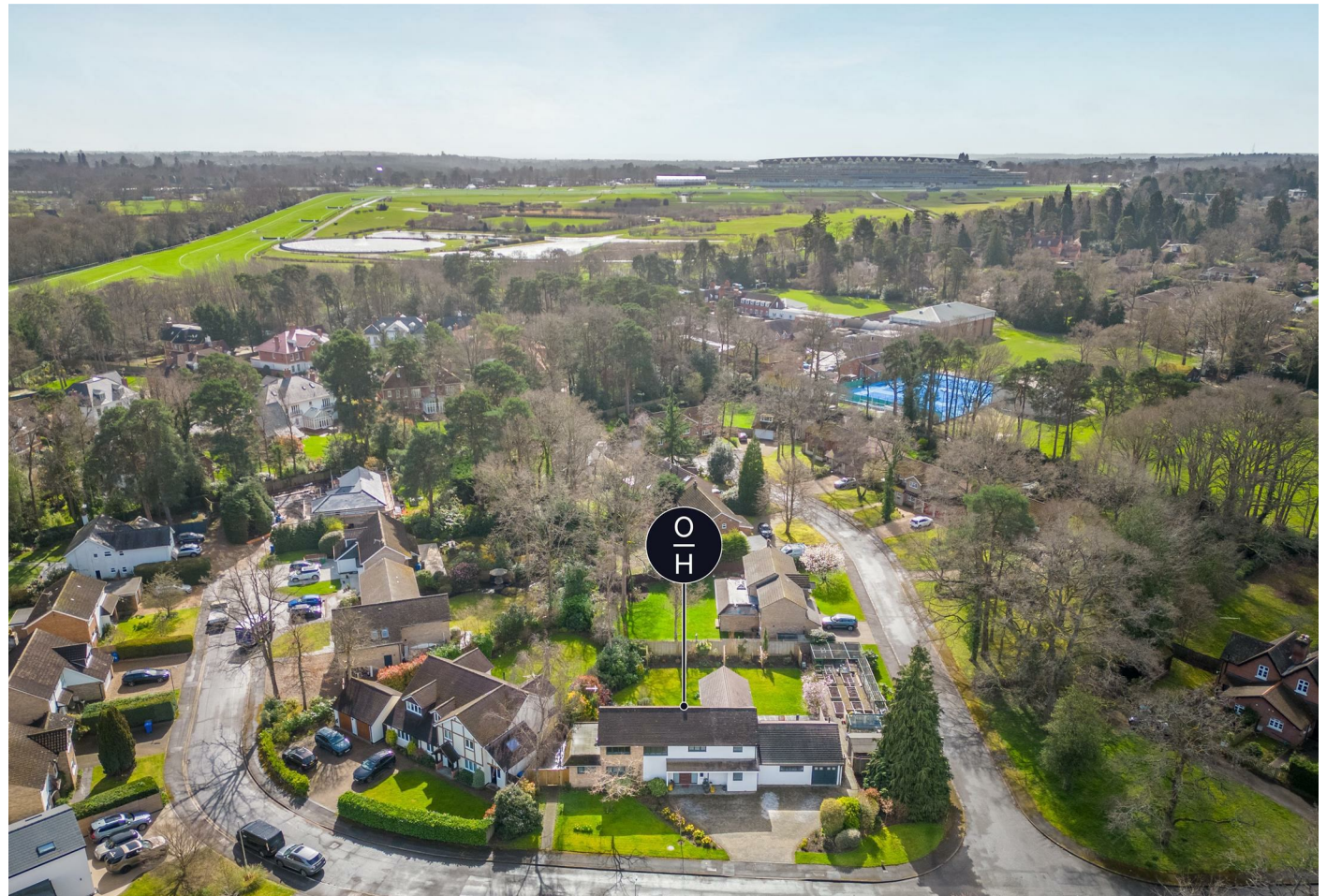
The ground floor has a large open-plan kitchen, living and dining room with sliding doors out to the garden. The kitchen features a breakfast bar and has fully-integrated appliances. There is also a music room, family room, utility room, study, another office and a guest suite with built-in wardrobes and en suite, gym and a downstairs shower room.

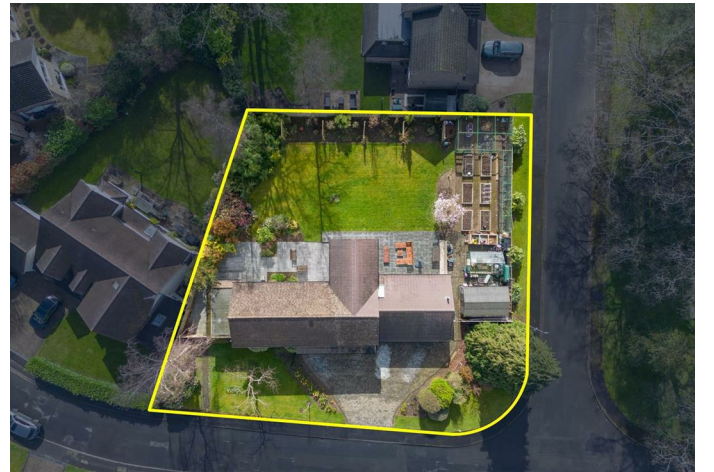
On the first floor is the principal suite with a dressing room and an en suite, four further bedrooms and a family bathroom.

Outside the property has a large driveway and side access on both sides to the south facing garden.

Oaklands Drive is a quiet cul-de-sac off The Avenue which is close to Ascot Racecourse. Other local places of interest include The Berkshire Golf Club, Coworth Park, Guards Polo Club, Legoland, The Lexicon, Sunningdale Golf Club, Swinley Forest, Wentworth Club, Windsor Castle and Windsor Great Park. Nearby schools include Charters, Cheapside, Heathfield, Lambrook, LVS, Papplewick and St Francis. The nearest train station is Ascot where services run to London, Reading and Guildford. By road Ascot is convenient for the M3, M4, M25 and Heathrow Airport.

EPC rating D. Council Tax band G.

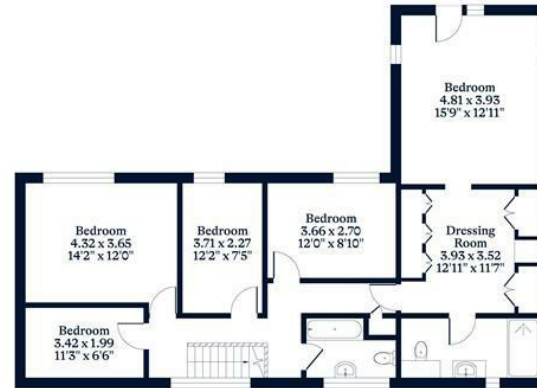




APPROXIMATE FLOOR AREA
House - 271.30 sq m - 2928 sq ft
(Gross Internal Area)



NOT TO SCALE
This plan is for illustration purposes only



First Floor



Ground Floor

This plan is for layout guidance only. Not drawn to scale unless stated. Windows and door openings are approximate. Whilst every care is taken in the preparation of this plan, please check all dimensions, shapes and compass bearings before making any decisions reliant upon them.

OSBORNEHEATH.CO.UK