

3 3 2

O
|
H



Warfield Park, *Bracknell*

OSBORNE HEATH

A charming three bedroom character home featuring an orangery and driveway parking.

This charming home has character features such as exposed beams, exposed brick and stained-glass internal windows.

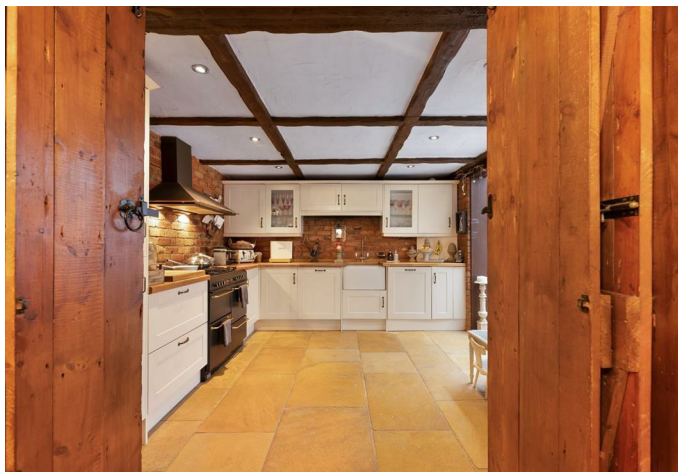
Downstairs comprises a drawing room with an exposed brick fireplace, a dining room, kitchen with a range cooker, and an orangery.

Upstairs is the principal bedroom which has fitted wardrobes and an en suite with jacuzzi bath and shower, a double bedroom, a single bedroom and an additional bathroom.

Outside there is driveway parking.

The Old Coach House is situated on a private road. Local schools include Heathfield, Lambrook, LVS, Ranelagh, St Joseph's and Whitegrove. Nearby points of interest include Ascot Racecourse, Guards Polo Club, Legoland, The Lexicon, Wentworth Club, Windsor Castle and Windsor Great Park. The nearest station is Martins Heron where trains run to London Waterloo and Reading. By road Warfield is convenient for the M3, M4, M25 and Heathrow Airport.

EPC rating E. Council Tax band E. Deposit £2,884. Holding Deposit £576. Lease Length 6-12 months. Short Let considered please call agent.

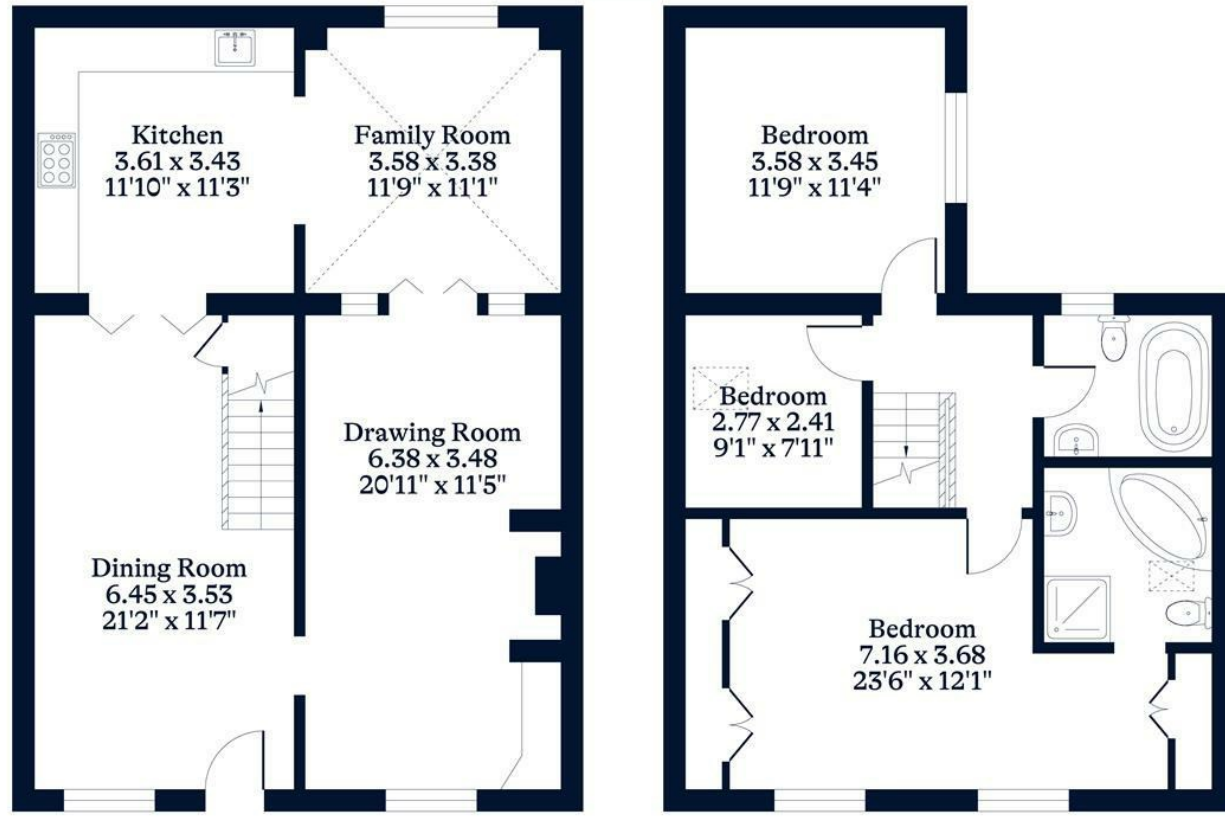




APPROXIMATE FLOOR AREA
House - 156.00 sq m - 1676 sq ft
(Gross Internal Area)



NOT TO SCALE
This plan is for illustration purposes only



Ground Floor

First Floor

This plan is for layout guidance only. Not drawn to scale unless stated. Windows and door openings are approximate. Whilst every care is taken in the preparation of this plan, please check all dimensions, shapes and compass bearings before making any decisions reliant upon them.

OSBORNEHEATH.CO.UK