

🛏️ 2 🪑 1 🚿 1



Mariposa House, *Ascot*

OSBORNE HEATH

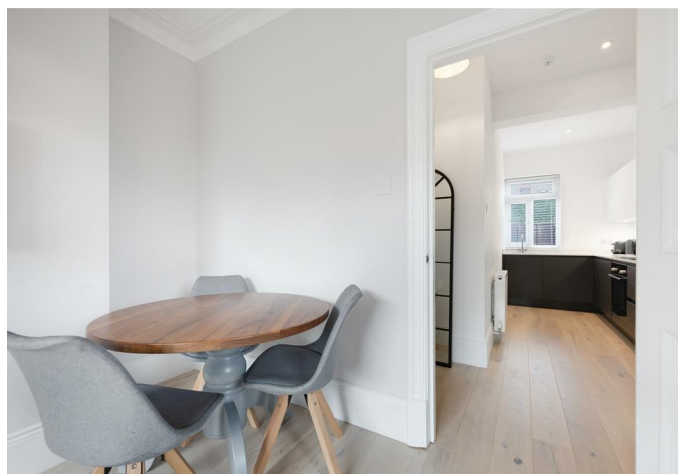
A fully furnished, modern two bedroom garden apartment.

This ground floor apartment has two bedrooms, a modern bathroom, living room with dining area and kitchen.

Outside there is off-road parking and a garden.

Mariposa House is on The Avenue, close to Ascot Racecourse and Royal Ascot Golf Club. Other local places of interest include The Berkshire Golf Club, Guards Polo Club, Legoland, Sunningdale Golf Club, Wentworth Club, Windsor Castle and Windsor Great Park. Nearby schools include Charters, Heathfield, Lambrook, LVS, Papplewick and St Francis. The nearest train station is Ascot where services run to London Waterloo, Reading and Guildford. By road Ascot is convenient for the M3, M4, M25 and Heathrow Airport.

EPC rating D. Council Tax Band C. Deposit £2,307. Holding Deposit £461. Lease Length 1-24 Months. Short Let Considered Please Call Agent.

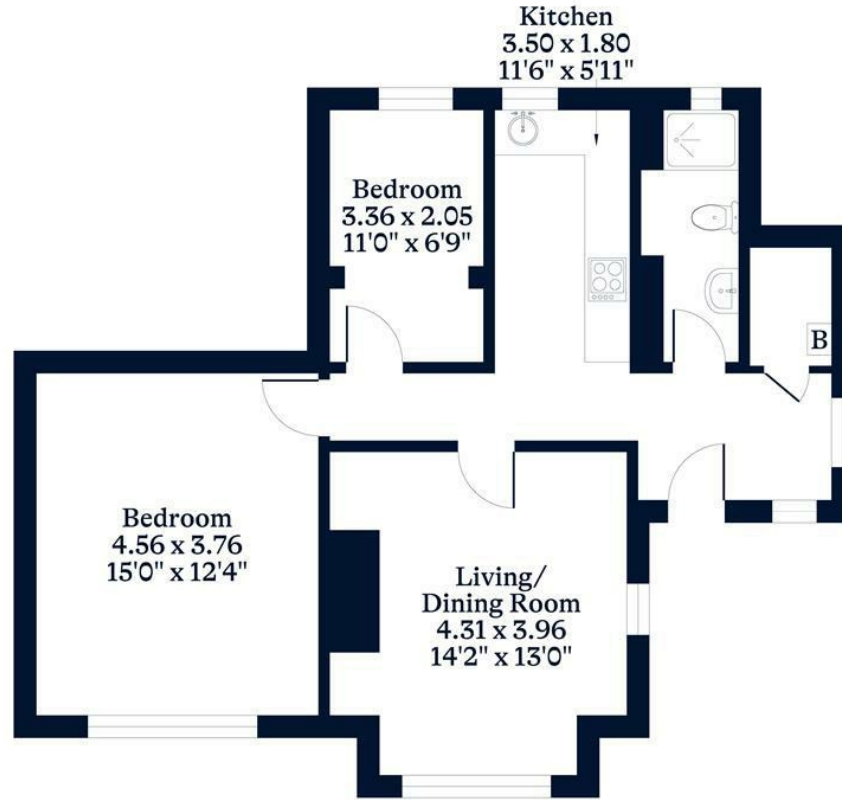




APPROXIMATE FLOOR AREA
Apartment - 63.81 sq m - 687 sq ft
(Gross Internal Area)



NOT TO SCALE
This plan is for illustration purposes only



Ground Floor

This plan is for layout guidance only. Not drawn to scale unless stated. Windows and door openings are approximate. Whilst every care is taken in the preparation of this plan, please check all dimensions, shapes and compass bearings before making any decisions reliant upon them.

OSBORNEHEATH.CO.UK