

3 3 3



# Blacknest Gate Road, *Ascot*

OSBORNE HEATH

# An extended and refurbished home on the boundary of Windsor Great Park and Virginia Water Lake, with gated driveway parking and no onward chain.

White Cottage has been fully refurbished by the current owner, with new flooring, kitchen and bathrooms, plus underfloor heating on the ground floor.

Downstairs is the living room, snug, kitchen with dining space, living area and a bar, plus a utility room with shower, downstairs WC and a sauna.

Upstairs there are three double bedrooms, a dressing area and en suite to the main bedroom, and a family bathroom.

Outside there is gated driveway parking.

White Cottage is next to the Blacknest Gate entrance to Windsor Great Park, convenient for Guards Polo Club and Virginia Water Lake. The house is also a short walk from popular venues The Belvedere, Bluebells and Coworth Park. Other local places of interest include Ascot Racecourse, Legoland, The Lexicon, Sunningdale Golf Club and Wentworth Club. Nearby schools include Bishopsgate, Charters, Cheapside, Holy Trinity, Lambrook, LVS, The Marist, Papplewick, St Francis and St Georges. The station in Ascot runs trains to London Waterloo, Guildford and Reading. Cheapside is also convenient for the M3, M4, M25 and Heathrow Airport.

EPC rating D. Council Tax band F. Garden forms part of Crown Land and is subject to an annual charge.

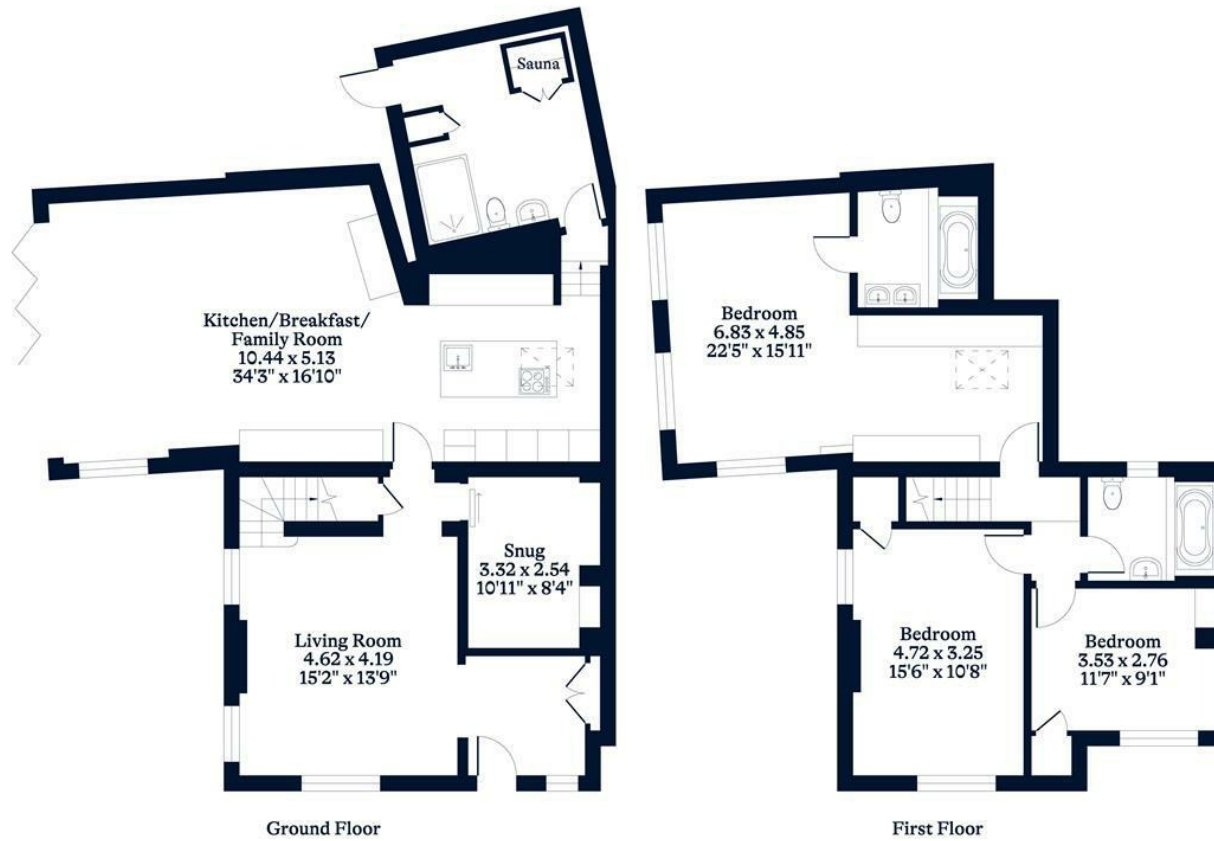




**APPROXIMATE FLOOR AREA**  
House - 178.0 sq m - 1918 sq ft  
(Gross Internal Area)



**NOT TO SCALE**  
This plan is for illustration purposes only



This plan is for layout guidance only. Not drawn to scale unless stated. Windows and door openings are approximate. Whilst every care is taken in the preparation of this plan, please check all dimensions, shapes and compass bearings before making any decisions reliant upon them.

[OSBORNEHEATH.CO.UK](http://OSBORNEHEATH.CO.UK)