

3 1 2



Heathcote Court, *Windsor*

OSBORNE HEATH

A large three bedroom, two bathroom penthouse apartment close to Windsor town centre and Long Walk, with two balconies, allocated parking, share of freehold and no onward chain.

The development has a secure entry system and refurbished communal hallways.

There are three double bedrooms, en suite shower room and additional bathroom on the third floor, with internal stairs to the fourth floor.

The fourth floor has a large L-shaped living room with a balcony and kitchen with a separate balcony. Both the kitchen and the living room have a fantastic view of Windsor Castle.

The property has allocated parking and visitor parking.

Heathcote Court is on Osborne Road, close to Windsor town centre and The Long Walk. Windsor also has The Great Park, Racecourse and Legoland. Nearby train stations include Windsor & Eton Central and Windsor & Eton Riverside where trains run to London Paddington (via Slough) and London Waterloo. Windsor is also convenient for the M4, M25, M40, M3 and Heathrow Airport. The area is well served by a number of state, private and international schools.

EPC rating C. Council Tax Band F. Share of freehold with underlying lease of 997 years. Ground Rent £0 pa. Service Charge £1920 pa.

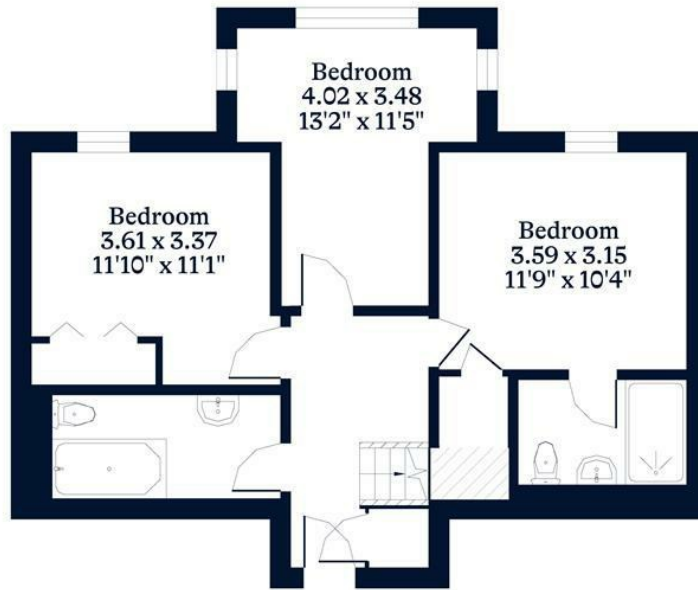




APPROXIMATE FLOOR AREA
House - 98.26 sq m - 1058 sq ft
(Gross Internal Area)



NOT TO SCALE
This plan is for illustration purposes only



Ground Floor



First Floor

This plan is for layout guidance only. Not drawn to scale unless stated. Windows and door openings are approximate. Whilst every care is taken in the preparation of this plan, please check all dimensions, shapes and compass bearings before making any decisions reliant upon them.

OSBORNEHEATH.CO.UK