

🛏️ 2 🛋️ 1 🛁 1



Blomfield Place, *Windsor*

OSBORNE HEATH

Located in the heart of the town centre, this new two bedroom duplex apartment has a stylish interior with views of Windsor Castle and two allocated parking spaces.

This first floor apartment has an open-plan living room with views of Windsor Castle, kitchen with Bosch appliances, double bedroom and a contemporary bathroom. Off the living room is a spiral staircase leading to an additional bedroom/study with an en suite cloakroom.

This property has two allocated parking spaces and the development has a secure entry system, bike store and bin store.

Frances Road is a sought after address in the heart of Windsor town centre. Windsor has a wide range of shops and restaurants as well as the Castle, Great Park, Racecourse and Legoland. Nearby train stations include Windsor & Eton Central and Windsor & Eton Riverside where trains run to London Paddington (via Slough) and London Waterloo. Nearby schools include Eton, The Kings House, Oakfield, The Queen Anne, St Edwards, Trevelyan, Trinity St Stephen, Upton House, Windsor Boys and Windsor Girls. Windsor is also convenient for the M4, M25 and Heathrow Airport.

EPC rating E. Council tax band D. Share of Freehold with underlying lease of 124 years. Ground Rent and Service Charge £1,326.00pa.

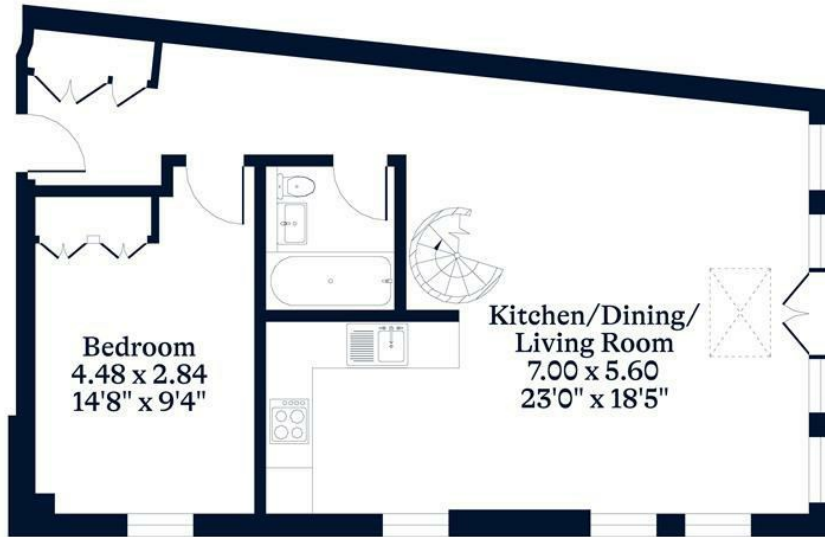




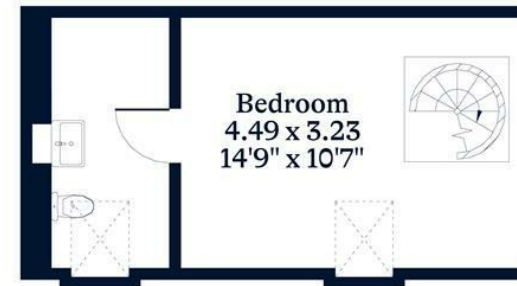
APPROXIMATE FLOOR AREA
House - 77.09 sq m - 830 sq ft
(Gross Internal Area)



NOT TO SCALE
This plan is for illustration purposes only



Ground Floor



First Floor

This plan is for layout guidance only. Not drawn to scale unless stated. Windows and door openings are approximate. Whilst every care is taken in the preparation of this plan, please check all dimensions, shapes and compass bearings before making any decisions reliant upon them.

OSBORNEHEATH.CO.UK