



Crown Close
Walton-On-Thames



A fully refurbished family home that offers an open-plan kitchen, dining and living room with doors leading out to a large rear garden and a utility/pantry room.

The principal bedroom has fitted wardrobes and an en suite shower room. There are a further three bedrooms and a luxury family bathroom.

Outside there is driveway parking and a rear garden.

The property is finished to a high standard throughout offering wideplank wooden flooring, high ceilings, luxury light fittings and stone counter tops in the kitchen.

Nearby schools include Ashley, Cardinal Newman, The Danesfield Manor, Grovelands, Three Rivers, Walton Oak Primary and Heathside. Local places of interest include Brooklands Museum, Burhill Golf Club, Hampton Court Palace, Mercedes-Benz World, River Thames, Sandown Racecourse, St Georges Golf Club, Xcel Leisure Centre. The nearest train stations are Walton-On-Thames and Hersham which run services to Basingstoke, London Waterloo and Woking. By road Walton-On-Thames is convenient for A3, M3, M25 and Heathrow Airport.

EPC Rating C. Council Tax Band E.



NOT TO SCALE

Approximate Floor Area
House 131.00 sq m - 1410 sq ft
(Gross Internal Area)

This plan is for illustration purposes only.

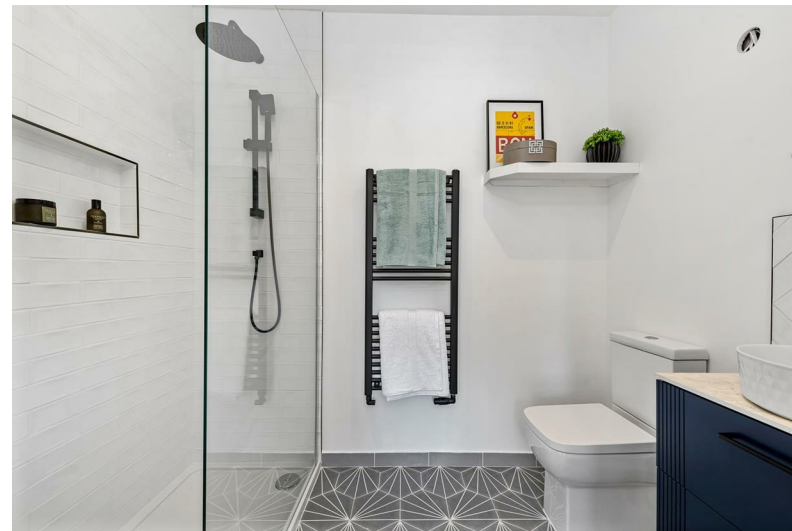


Ground Floor

This plan is for layout guidance only. Not drawn to scale unless stated. Windows and door openings are approximate. Whilst every care is taken in the preparation of this plan, please check all dimensions, shapes and compass bearings before making any decisions reliant upon them.

© Property Shoot Ltd

A beautiful four bedroom, two bathroom family home with off-street parking for numerous cars, close to the river and Walton-On-Thames High Street.



01932 858583

osborneheath.co.uk • weybridgesales@osborneheath.co.uk • weybridgelettings@osborneheath.co.uk