

 6  8  5



Lowood House, *Sunninghill*

OSBORNE HEATH

**VIDEO VIEWING
AVAILABLE - A vast six
bedroom, five bathroom family
home with ample entertaining
space, an indoor swimming pool
and gym, plus a triple garage
and private south facing
garden.**









The main entrance has a large foyer leading to a living room, family room, dining room, home office, kitchen with dining area, conservatory, sunroom, utility and a downstairs WC.

Upstairs the principal bedroom has a dressing area and a large en suite, and four further bedrooms share two en suites and a bathroom.

The triple garage and annexe is linked to the main house by the indoor heated swimming pool with hot-tub. The annexe has a games room, gym, sauna, kitchen, shower room, WC and a bedroom. The annexe could be self-contained if needed.

Outside there is driveway parking for multiple vehicles and a landscaped, south facing rear garden.

Local schools include Charters, Cheapside and St Francis. Private schools include Hall Grove, Heathfield, LVS, Papplewick, St George's, St Mary's, Sunningdale and The Marist. Nearby places of interest include Ascot Racecourse, The Berkshire Golf Club, Coworth Park, Guards Polo Club, Sunningdale Golf Club, Swinley Forest Golf Club, Wentworth Club and Windsor Great Park. The nearest train station is Ascot where trains run to London Waterloo, Reading and Guildford. Ascot is also convenient for the M3, M4, M25 and Heathrow Airport.

EPC rating C.
Council Tax Band H
Royal Borough of Windsor and Maidenhead



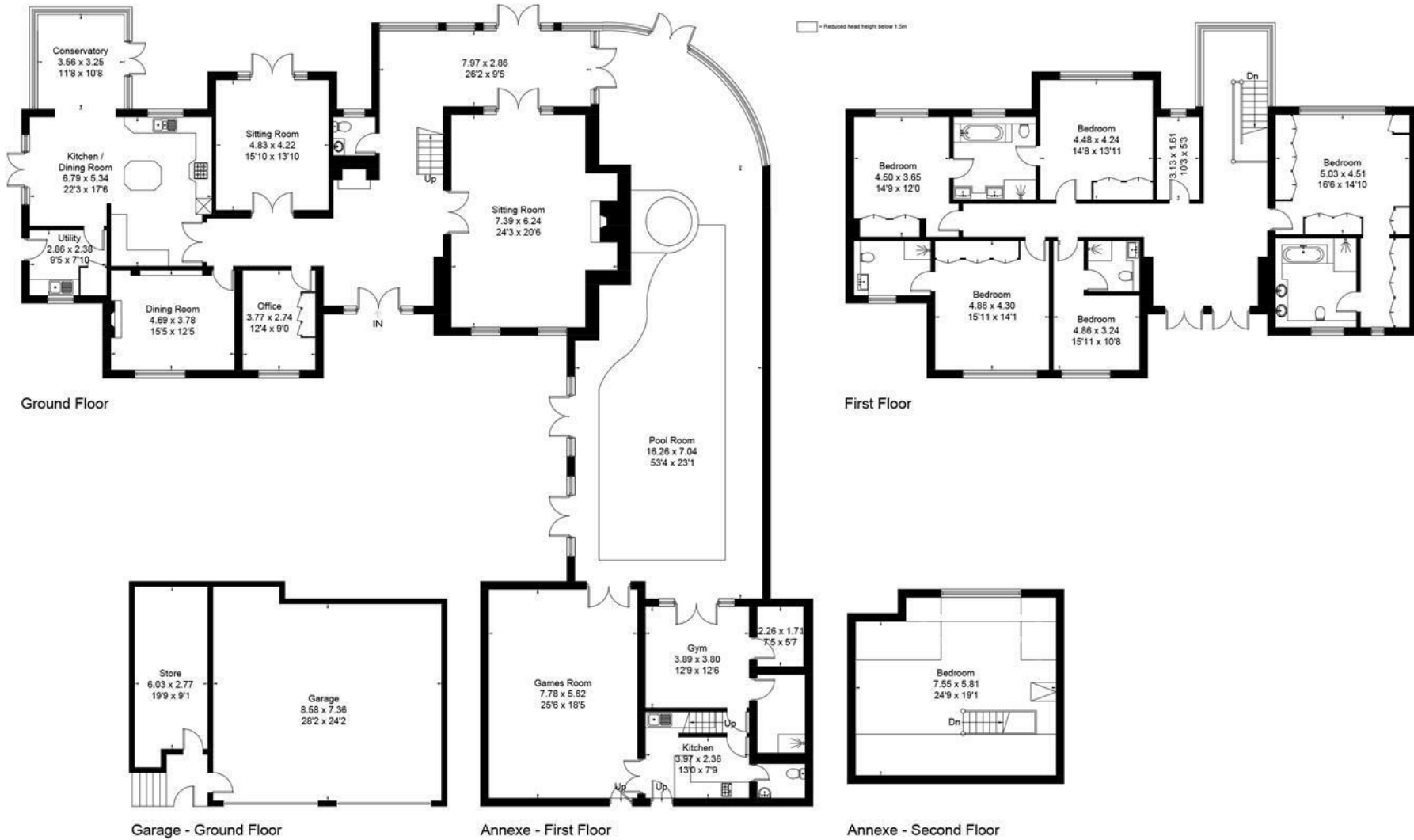


Approximate Area = 678.1 sq m / 7299 sq ft (Including Annexe / Pool Room)

Garage / Store = 84.0 sq m / 904 sq ft

Total = 762.1 sq m / 8203 sq ft

Including Limited Use Area (22 sq m / 237 sq ft)





Visit osborneheath.co.uk

Call 01344 627777

Email ascotsales@osborneheath.co.uk

OSBORNE HEATH