



# Apsley Cottages

Ascot





On the ground floor of this Victorian home we have an open plan living/dining room with a log burner, modern kitchen with dining space and doors leading out to the garden.

The first floor has two double bedrooms and a modern family bathroom.

The second floor provides a further double bedroom with en suite shower room following a loft conversion in 2017.

The outside of the property has gated off-street parking for two cars and a garden with summerhouse which is ideal as an office space.

Apsley Cottages are off London Road, within a mile of Ascot High Street and Ascot Racecourse. Located within a few minutes walk of local shops, an excellent pub and Englemere Pond is also located near by. The nearest train stations are Martins Heron and Ascot where services run to London Waterloo, Reading and Guildford. By road Ascot is convenient for the M3, M4, M25 and Heathrow Airport. Other nearby places of interest include Coworth Park, Legoland, The Lexicon, Sunningdale Golf Club, Wentworth Club, Savill Garden, Windsor Castle and Windsor Great Park. The nearest schools are LVS and Ascot Heath. Other nearby schools include Charters, Heathfield, Papplewick and St. Francis.

EPC rating C.

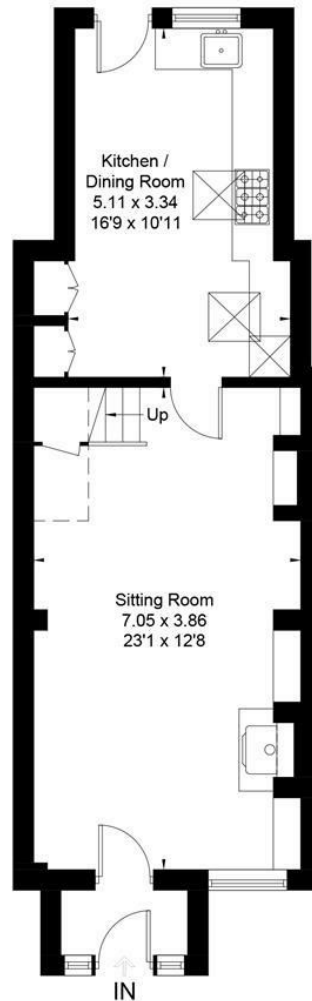


Approximate Area = 87.1 sq m / 937 sq ft (Excluding Void)

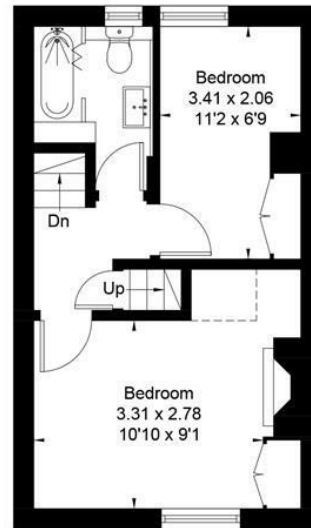
Outbuilding = 10.8 sq m / 116 sq ft

Total = 97.9 sq m / 1053 sq ft

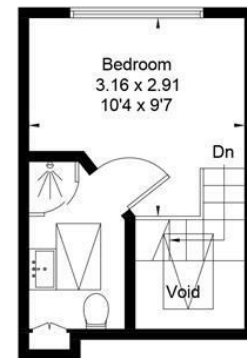
Including Limited Use Area (2.8 sq m / 30 sq ft)



Ground Floor

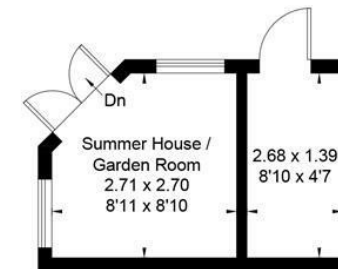


First Floor



Second Floor

[ ] = Reduced head height below 1.5m



(Not Shown In Actual  
Location / Orientation)



VIDEO VIEWING AVAILABLE - Built in 1898, and recently refurbished, a three double bedroom character property with gated off-street parking and private garden.



01344 627777

[osborneheath.co.uk](http://osborneheath.co.uk) • [ascotsales@osborneheath.co.uk](mailto:ascotsales@osborneheath.co.uk) • [ascotlettings@osborneheath.co.uk](mailto:ascotlettings@osborneheath.co.uk)